

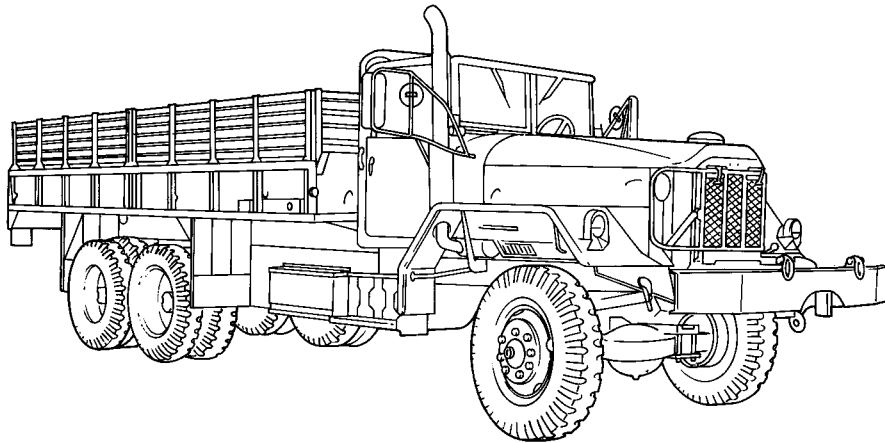
# ARMY TM 9-2320-260-24P-2 AIR FORCE TO 36A12-1C-382-2

( SUPERCEDES TM 9-2320-260-20P, dated MAY 1992 and TM 9-2320-260-34P-2 , dated JUNE 1994 )

---

## TECHNICAL MANUAL

### UNIT, DIRECT SUPPORT, AND GENERAL SUPPORT MAINTENANCE REPAIR PARTS AND SPECIAL TOOLS LIST FOR TRUCK, 5-TON, 6X6, M809 SERIES (DIESEL)



TRUCK, CHASSIS: 5-TON, 6X6,  
M810 (2320-00-051-0586); M810 (2320-00-051-0585);

TRUCK, CHASSIS, ROCKET LAUNCHER: 5-TON, 6X6,  
M812A1 (2320-00-050-9040);

TRUCK, CARGO: 5-TON, 6X6,  
M813 (2320-00-050-8902) (EIC: BSB); M813 (2320-00-050-8890) (EIC: BSA); M813A1 (2320-00-050-8913) (EIC: BSD);  
M813A1 (2320-00-050-8905) (EIC: BSC); M814 (2320-00-050-8988) (EIC: BSK); M814 (2320-00-050-8987) (EIC: BSJ);

TRUCK, BOLSTER LOGGING: 5-TON, 6X6,  
M815 (2320-00-050-8927) (EIC: BSE);

TRUCK, WRECKER, MEDIUM: 5-TON, 6X6,  
M816 (2320-00-051-0489) (EIC: BSQ);

TRUCK, DUMP: 5-TON, 6X6,  
M817 (2320-00-050-8970) (EIC: BSF); M817 (2320-00-051-0589) (EIC: BSR);

TRUCK, TRACTOR: 5-TON, 6X6,  
M818 (2320-00-050-8984) (EIC: BSH); M818 (2320-00-050-8978) (EIC: BSG);

TRUCK, VAN, EXPANSIBLE: 5-TON, 6X6,  
M820 (2320-00-050-9006) (EIC: BSM); M820A1 (2320-00-050-9007); M820A2 (2320-00-050-9010) (EIC: BSN);

TRUCK, STAKE, BRIDGE TRANSPORTING: 5-TON, 6X6,  
M821 (2320-00-050-9015) (EIC: BSP).

DISTRIBUTION STATEMENT A - Approved for public release; distribution is unlimited.

---

## DEPARTMENTS OF THE ARMY AND THE AIR FORCE

## SEP 2003



## LIST OF EFFECTIVE PAGES/WORK PACKAGES

The date of issue for original pages/work pages for this TM is:

Original 30 Sept 2003

**TOTAL NUMBER OF PAGES FOR FRONT AND REAR MATTER IS 12 AND**

**TOTAL NUMBER OF WORK PACKAGES IS 245 CONSISTING OF THE FOLLOWING:**

Page/WP* No.	Change No.
A .....	0
B blank .....	0
i - vii .....	0
WP 0290 00 - 0534 00 .....	0

\*Zero in this column indicates original page.

A/B blank



TECHNICAL MANUAL  
NO. 9-2320-260-24P-2

DEPARTMENTS OF THE ARMY,  
AND THE AIR FORCE  
WASHINGTON, D.C. 30 September 2003

TECHNICAL ORDER  
NO. 36A12-1C-382-2

# UNIT, DIRECT SUPPORT, AND GENERAL SUPPORT MAINTENANCE REPAIR PARTS AND SPECIAL TOOLS LIST

## FOR

TRUCK, CHASSIS: 5-TON, 6X6,  
M810 (2320-00-051-0586); M810 (2320-00-051-0585);

TRUCK, CHASSIS, ROCKET LAUNCHER: 5-TON, 6X6,  
M812A1 (2320-00-050-9040);

TRUCK, CARGO: 5-TON, 6X6,  
M813 (2320-00-050-8902) (EIC: BSB); M813 (2320-00-050-8890) (EIC: BSA); M813A1 (2320-00-050-8913) (EIC: BSD);  
M813A1 (2320-00-050-8905) (EIC: BSC); M814 (2320-00-050-8988) (EIC: BSK); M814 (2320-00-050-8987) (EIC: BSJ);

TRUCK, BOLSTER LOGGING: 5-TON, 6X6,  
M815 (2320-00-050-8927) (EIC: BSE);

TRUCK, WRECKER, MEDIUM: 5-TON, 6X6,  
M816 (2320-00-051-0489) (EIC: BSQ);

TRUCK, DUMP: 5-TON, 6X6,  
M817 (2320-00-050-8970) (EIC: BSF); M817 (2320-00-051-0589) (EIC: BSR);

TRUCK, TRACTOR: 5-TON, 6X6,  
M818 (2320-00-050-8984) (EIC: BSH); M818 (2320-00-050-8978) (EIC: BSG);

TRUCK, VAN, EXPANSIBLE: 5-TON, 6X6,  
M820 (2320-00-050-9006) (EIC: BSM); M820A1 (2320-00-050-9007); M820A2 (2320-00-050-9010) (EIC: BSN);

TRUCK, STAKE, BRIDGE TRANSPORTING: 5-TON, 6X6,  
M821 (2320-00-050-9015) (EIC: BSP).

Current as of 22 March 2002

### REPORTING ERRORS AND RECOMMENDING IMPROVEMENTS

You can help improve this publication. If you find any mistakes or if you know of a way to improve the procedures, please let us know. Submit your DA Form 2028 (Recommended Changes to Equipment Technical Publications), through the Internet, on the Army Electronic Product Support (AEPS) website. The Internet address is <http://aeprs.ria.army.mil>. If you need a password, scroll down and click on "ACCESS REQUEST FORM". The DA Form 2028 is located in the ONLINE FORMS PROCESSING section of the AEPS. Fill out the form and click on SUBMIT. Using this form on the AEPS will enable us to respond quicker to your comments and better manage the DA Form 2028 program. You may also mail, fax or E-mail your letter or DA Form 2028 direct to: AMSTA-LC-CI TECH PUBS, TACOM-RI, 1 Rock Island Arsenal, Rock Island, IL 61299-7630. The email address is TACOM-TECH-PUBS@ria.army.mil. The fax number is DSN 793-0726 or Commercial (309) 782-0726.

Approved for public release; distribution is unlimited.

\* This manual supersedes TM 9-2320-260-20P, dated May 1992 and TM 9-2320-260-34P-2, dated June 1994

TABLE OF CONTENTS

	WP	Sequence No.
Group 18		
BODY, CAB, AND HOOD		
1812 Van Body Assembly and Mounting Hardware . . . . .	0290	00
1812 Van Body Assembly and Mounting Hardware . . . . .	0291	00
1812 Van Splash Guard Assemblies . . . . .	0292	00
1812 Van Side Lock Handle, Lifting Brackets, Rod Retainer, and Related Parts . . . . .	0293	00
1812 Van Rear Wall Panels and Mounting Hardware . . . . .	0294	00
1812 Van Rear Wall Panels and Mounting Hardware . . . . .	0295	00
1812 Van Hinged End Panel Assemblies and Related Parts . . . . .	0296	00
1812 Van Door Assembly, Left Rear . . . . .	0297	00
1812 Van Door Assembly, Left Rear . . . . .	0298	00
1812 Van Door Assembly, Right Rear . . . . .	0299	00
1812 Van Door Assembly, Right Rear . . . . .	0300	00
1812 Van Sash Assembly, Rear Doors . . . . .	0301	00
1812 Van Underframe Assembly . . . . .	0302	00
1812 Van Underframe Assembly . . . . .	0303	00
1812 Van Retractable Beams, Ratchet Shaft, and Rollers . . . . .	0304	00
1812 Van Hinged Floor Assembly . . . . .	0305	00
1812 Van Hinged Floor Assembly . . . . .	0306	00
1812 Van Counterbalance and Mounting Hardware . . . . .	0307	00
1812 Van Wall Assemblies, Right and Left Side, and Weatherseal . . . . .	0308	00
1812 Van Wall Assemblies, Right and Left Side, and Weatherseal . . . . .	0309	00
1812 Van Interior Side Panels, Right and Left Side . . . . .	0310	00
1812 Van Interior Side Panels, Right and Left Side . . . . .	0311	00
1812 Van Side Panel Door Checks, Interior Latch Assemblies, and Related Parts, Right and Left Side . . . . .	0312	00
1812 Van Side Panel Door Checks, Interior Latch Assemblies, and Related Parts, Right and Left Side . . . . .	0313	00
1812 Van Retractable Window Sash Assembly and Related Parts, Right and Left Side . . . . .	0314	00
1812 Van Door Assemblies, Right and Left Side . . . . .	0315	00
1812 Van Door Assemblies, Right and Left Side . . . . .	0316	00
1812 Van Ceiling, Frame, and Related Parts, Interior and Exterior . . . . .	0317	00
1812 Van Air Conditioning Duct and Related Parts . . . . .	0318	00
1812 Van Air Conditioning Duct and Related Parts . . . . .	0319	00
1812 Van Hinged Roof Assembly, Latch, and Related Parts, Right and Left Side . . . . .	0320	00
1812 Van Hinged Roof Assembly, Holder Assemblies, Panels, and Related Parts . . . . .	0321	00
1812 Van Front Wall and Fire Extinguisher Bracket . . . . .	0322	00
1812 Van Heater Fuel Pump, Cover, Lines, and Fittings . . . . .	0323	00
1812 Van Bonnet Frame and Related Parts . . . . .	0324	00
1812 Van Heater, Exhaust, and Vent Door Controls . . . . .	0325	00
1812 Van Air Conditioner, Drain Tube, and Mounting Hardware . . . . .	0326	00
1812 Van Access Door Assembly . . . . .	0327	00
1812 Van Bonnet Door Assembly, Right and Left Side . . . . .	0328	00
1812 Main Wiring Harness Mounting Hardware . . . . .	0329	00
1812 Van Main Wiring Harness, Right and Left Side . . . . .	0330	00
1812 Van Air Conditioner and Heater Wiring Harnesses . . . . .	0331	00

TABLE OF CONTENTS (Contd)

	WP	Sequence No.
1812 Van Heater Fuel Pump and Circuit Breaker Wiring Harness . .	0332	00
1812 Van Blackout By-Pass and 10 kw Electric Heater Wiring Harness . . . . .	0333	00
1812 Van Blackout and Clearance Light Wiring Harness . . . . .	0334	00
1812 Van Blackout Wiring Harnesses, Right and Left Side . . . . .	0335	00
1812 Van Emergency Lamp Wiring Harnesses, Right and Left Side . . . . .	0336	00
1812 Van Auxiliary Hydraulic Pump and 400 Hz Converter Wiring Harnesses . . . . .	0337	00
1812 Van Auxiliary Hydraulic Pump and 400 Hz Converter Wiring Harnesses . . . . .	0338	00
1812 Van 400 Hz Converter Wiring Harnesses . . . . .	0339	00
1812 Van Telephone Jack and 3-Phase Receptacle Harnesses . . . . .	0340	00
1812 Van Electrical Load Center and Mounting Hardware . . . . .	0341	00
1812 Van Electrical Junction Box and Related Parts . . . . .	0342	00
1812 Van 400 Hz Converter Junction Box, Auxiliary Hydraulic Pump, Electrical Converter Box and Related Parts . . . . .	0343	00
1812 Van Circuit Breaker Control Box and Related Parts . . . . .	0344	00
1812 Van 400 Hz Converter, Circuit Breaker, and Mounting Hardware . . . . .	0345	00
1812 Van Heater Thermostatic Switch and Fluorescent Starter . . . .	0346	00
1812 Van Telephone Jack and Related Parts, Interior and Exterior . . . . .	0347	00
1812 Van Hinged Roof Plunger and Blackout Light Switch . . . . .	0348	00
1812 Van 3-Phase and 400 Hz Receptacles . . . . .	0349	00
1812 Van Ceiling Switch, Front Wall Switch, Receptacle Assembly, and Related Parts . . . . .	0350	00
1812 Van Blackout and Emergency Switches, and Related Parts . . . .	0351	00
1812 Van Blackout and Emergency Lamps, Interior . . . . .	0352	00
1812 Van Ceiling Lamp Fixtures and Bulb . . . . .	0353	00
1812 Wrecker Crane Body Assembly and Mounting Hardware . . . . .	0354	00
1812 Wrecker Body Assembly . . . . .	0355	00
1812 Wrecker Outrigger Jack Assembly and Related Parts . . . . .	0356	00
1812 Wrecker Fuel Can Bracket, Fire Extinguisher Bracket, and Vise Mounting . . . . .	0357	00
1812 Wrecker Splash Guards . . . . .	0358	00
1812 Bolster Logger Cab Protector Assembly, Bolster Assembly, and Mounting Hardware . . . . .	0359	00
1812 Bolster Logger Fifth Wheel Assembly and Mounting Hardware . . . . .	0360	00
1812 Bolster Logger Trailer Carrier Assembly and Ramps . . . . .	0361	00
Group 20 HOIST, WINCH, CRANE, AND POWER TAKEOFF		
2001 Front Winch Brackets and Mounting Hardware . . . . .	0362	00
2001 Front Winch Assembly, Complete and Wire Rope Assembly, Wrecker and Bolster Logger . . . . .	0363	00
2001 Front Winch Assembly, Complete and Wire Rope Assembly . . . .	0364	00
2001 Front Winch Sheave Assembly, Wrecker, and Bolster Logger . .	0365	00
2001 Front Winch Tensioner Assembly, Roller Assembly, and Related Parts . . . . .	0366	00
2001 Front Winch Propeller Drive Shaft Assembly . . . . .	0367	00
2001 Bolster Logger Midwinch and Wire Rope Assembly . . . . .	0368	00
2001 Winch Assembly, Basic, Drum, and Related Parts . . . . .	0369	00
2001 Hand Winch Assembly and Wire Rope Assembly, Side . . . . .	0370	00

TABLE OF CONTENTS (Contd)

	WP	Sequence No.
2001 Wrecker Rear Winch Assembly Complete and Wire Rope Assembly . . . . .	0371	00
2001 Wrecker Rear Winch Sheave Swivel and Trolley Assembly . . . .	0372	00
2001 Wrecker Rear Winch Cable Tensioner . . . . .	0373	00
2001 Wrecker Rear Winch Assembly, Basic . . . . .	0374	00
2001 Wrecker Rear Winch Drive Shaft, Bearing Assembly, and Chain . . . . .	0375	00
2001 Wrecker Rear Winch Controls and Winch Brake Assembly . . . .	0376	00
2001 Wrecker Rear Winch and Crane Controls . . . . .	0377	00
2001 Dump Hydraulic Hoist Assembly . . . . .	0378	00
2001 Dump Hoist Safety Latch Assembly, Hoses, and Filter . . . . .	0379	00
2001 Dump Hoist Pump Assembly and Mounting Hardware . . . . .	0380	00
2001 Dump Hoist Control Box Assembly . . . . .	0381	00
2001 Dump Hoist Control Valve Assembly and Mounting . . . . .	0382	00
Hardware		
2001 Dump Controls and Mounting Hardware . . . . .	0383	00
2001 Dump Control Connecting Links . . . . .	0384	00
2001 Dump Hoist Propeller Drive Shaft Assembly . . . . .	0385	00
2001 Wrecker Crane Gondola Assembly . . . . .	0386	00
2001 Wrecker Crane Turntable Assembly . . . . .	0387	00
2001 Wrecker Crane Gear Case Assembly and Mounting Hardware . .	0388	00
2001 Wrecker Crane Boom Elevating Cylinder Assembly . . . . .	0389	00
2001 Wrecker Sheave and Operator Guard . . . . .	0390	00
2001 Wrecker Boom Assembly . . . . .	0391	00
2001 Wrecker Inner Boom Extension Assembly . . . . .	0392	00
2001 Wrecker Inner Boom Extension Cylinder Assembly . . . . .	0393	00
2001 Crane Hoist Winch and Mounting Hardware . . . . .	0394	00
2001 Crane Boom Hoist Winch Assembly . . . . .	0395	00
2001 Wrecker Hoist Hydraulic Winch Motor . . . . .	0396	00
2001 Wrecker Tackle Block and Wire Rope Assembly . . . . .	0397	00
2001 Wrecker Hoist Drive and Hoist Shaft Assemblies . . . . .	0398	00
2001 Wrecker Hoist Gear Case Assembly . . . . .	0399	00
2001 Wrecker Gondola Hoist Control Valve Assembly . . . . .	0400	00
2001 Wrecker Control Valve Hydraulic Hoses, Lines, and Fittings . .	0401	00
2001 Wrecker Hydraulic Hoses, Lines, and Fittings . . . . .	0402	00
2001 Wrecker Hydraulic Oil Tank Assembly and Mounting Hardware . . . . .	0403	00
2001 Wrecker Hydraulic Fluid Filter Assembly . . . . .	0404	00
2001 Wrecker Rear Winch Vertical Roller and Mounting Hardware . . . . .	0405	00
2001 Wrecker Rear Winch Horizontal Roller and Mounting Hardware . . . . .	0406	00
2001 Wrecker Throttle Control Lever, Cable, and Related Parts . . . .	0407	00
2001 Van Hydraulic Liftgate Assembly and Mounting Hardware . . . . .	0408	00
2001 Van Liftgate Platform Assembly and Hinge Plate . . . . .	0409	00
2001 Van Liftgate Frame and Linkage . . . . .	0410	00
2001 Van Liftgate Controls and Safety Latch . . . . .	0411	00
2001 Van Liftgate Control Assembly, Left Hand, and Right Hand . . .	0412	00
2001 Van Liftgate Hydraulic Tubing, Oil Tank, and Pump Motor . . .	0413	00
2001 Van Liftgate Pump Assembly . . . . .	0414	00
2001 Van Liftgate Hydraulic Tubing and Flow Control Valve . . . . .	0415	00



TABLE OF CONTENTS (Contd)

	WP	Sequence No.
2001 Van Liftgate Cylinder Assembly and Mounting Hardware . . . .	0416	00
2001 Van Liftgate Closing Cylinder Assemblies . . . . .	0417	00
2001 Van Liftgate Pump Drive Shaft Assembly and Related Parts . .	0418	00
2004 Transmission Power Takeoff Assembly and Mounting Hardware . . . . .	0419	00
2004 Transmission Power Takeoff Assembly and Mounting Hardware . . . . .	0420	00
2004 Transfer Transmission Power Takeoff Assembly . . . . .	0421	00
2004 Transfer Transmission Power Takeoff Assembly . . . . .	0422	00
2004 Power Divider and Drive Shaft Assemblies . . . . .	0423	00
2004 Power Divider Gears, Yokes, and Related Parts . . . . .	0424	00
2004 Power Divider Shifter Fork, Control Lever, and Related Parts . . . . .	0425	00
2004 Rotochamber Assembly and Related Parts . . . . .	0426	00
2004 Transfer Transmission Power Takeoff Controls . . . . .	0427	00
2004 Van Power Takeoff Controls . . . . .	0428	00
2004 Tractor Wrecker and Bolster Logger Power Takeoff Controls . . . . .	0429	00
2004 Wrecker Power Divider Controls . . . . .	0430	00
2004 Wrecker Auxiliary Clutch Control Piping . . . . .	0431	00
<b>Group 22</b> BODY, CHASSIS, AND ACCESSORY ITEMS		
2201 Soft Top Assembly, Mounting Hardware, and Related Parts . .	0432	00
2201 Soft Top Post and Rail Assembly . . . . .	0433	00
2201 Cargo Body Adjustable Safety Strap and Bow Stowage Strap Assembly . . . . .	0434	00
2201 Wrecker Gondola Canopy and Seat . . . . .	0435	00
2202 Windshield Wiper Arm, Blade and Mounting Hardware . . . . .	0436	00
2202 Rearview Mirror Assembly, Right and Left Side . . . . .	0437	00
2202 Rearview Mirror Assembly, Right and Left Side . . . . .	0438	00
2202 Convex Side View Mirror and Mounting Hardware . . . . .	0439	00
2202 Cargo Body Reflectors and Mounting Hardware . . . . .	0440	00
2202 Dump Body Reflectors and Mounting Hardware . . . . .	0441	00
2202 Tractor Body Reflectors and Mounting Hardware . . . . .	0442	00
2202 Tractor Wrecker, and Wrecker Body Reflectors, and Mounting Hardware . . . . .	0443	00
2202 Van Body and Bolster Logger Body Reflectors and Mounting Hardware . . . . .	0444	00
2210 Data Plates, Engine . . . . .	0445	00
2210 Data Plates, Air Cleaner, Air Restriction Gage, Surge Tank, and Fuel Pump . . . . .	0446	00
2210 Data Plates, Tractor Wrecker, Swing Motor, and Cable Drum Drive and Wrecker Controls . . . . .	0447	00
2210 Data Plates, Wrecker Controls, and Rear Winch Controls . . . .	0448	00
2210 Data Plates, Front and Rear Winch . . . . .	0449	00
2210 Data Plates, Power Takeoff Controls . . . . .	0450	00
2210 Data Plates, Van Body Interior . . . . .	0451	00
2210 Data Plates, Van Body Exterior and Van Liftgate . . . . .	0452	00
2210 Data Plates, Tire Warning, Fifth Wheel and Tow Bar . . . . .	0453	00
2210 Data Plates, Transmission, Power Steering Pump and Emergency and Service Air . . . . .	0454	00
2210 Data Plates, Instrument Panel, Battery Box and Generator . . .	0455	00
2210 Data Plates, Engine, Transmission and Transfer Containers . .	0456	00
2210 Data Plates, Hood and Brake Fluid . . . . .	0457	00

TABLE OF CONTENTS (Contd)

	WP	Sequence No.
2210 Data Plates, Dump Body Cab Protector, Cargo Body Tail and Side Gates . . . . .	0458	00
Group 33 SPECIAL PURPOSE KITS		
3301 Shipping Containers, Engine, Transfer and Transmission . . . . .	0459	00
3303 Fuel Burning Personnel Heater Kit, Heater Exhaust, and Mounting Hardware . . . . .	0460	00
3303 Fuel Burning Personnel Heater Kit, Heater Exhaust, and Mounting Hardware, Model 10530-A24 . . . . .	0461	00
3303 Fuel Burning Personnel Heater Kit, Heater Exhaust, and Mounting Hardware, Model 10530B . . . . .	0462	00
3303 Fuel Burning Personnel Heater Kit, Pump, Control, and Wiring Harness . . . . .	0463	00
3303 Fuel Burning Personnel Heater Kit, Defroster Assembly . . . . .	0464	00
3303 Fuel Burning Personnel Heater Kit, Alcohol Evaporator, Receptacle, and Shift Lever Dust Boots . . . . .	0465	00
3303 Engine Coolant Heater Kit, Hood and Grill Cover . . . . .	0466	00
3303 Engine Coolant Heater Kit, Heater Coolant Assembly . . . . .	0467	00
3303 Engine Coolant Heater Kit, Control and Wiring Harness . . . . .	0468	00
3303 Engine Coolant Heater Kit, Battery Box, Exhaust, and Coolant Hoses . . . . .	0469	00
3303 Thermal Barrier Kit . . . . .	0470	00
3303 Hot Water Personnel Heater Kit, Defroster Assembly and Deflector . . . . .	0471	00
3303 Hot Water Personnel Heater Kit, Heater Assembly and Related Parts . . . . .	0472	00
3303 Hot Water Personnel Heater Kit, Radiator Cover . . . . .	0473	00
3303 Hot Water Personnel Heater Kit, Control Switch, Wiring Leads, and Resistor Assembly . . . . .	0474	00
3303 Hardtop Kit . . . . .	0475	00
3305 Deep Water Fording Kit, Lines and Fittings . . . . .	0476	00
3305 Deep Water Fording Kit, Control Assembly and Valve Set . . . . .	0477	00
3305 Deep Water Fording Exhaust, M812A1 . . . . .	0478	00
3307 Seat Belt Kit, Fixed and Floating Driver's Seat . . . . .	0479	00
3307 Mud Flap Kit, Tractor, Rear . . . . .	0480	00
3307 Mud Flap Kit, Tractor, Rear . . . . .	0481	00
3307 Wiper Washer Bottle Kit, Jet and Pump Assembly . . . . .	0482	00
3307 Slave Receptacle Kit . . . . .	0483	00
3307 Intervehicle Power Cable Kit . . . . .	0484	00
3307 A-Frame Components Kit . . . . .	0485	00
3307 Pioneer Tool Bracket Kit . . . . .	0486	00
3307 Machine Gun Mounting Kit . . . . .	0487	00
3307 Air Drop Kit . . . . .	0488	00
3307 Bow and Tarp Kit, Dropside . . . . .	0489	00
3307 Bow and Tarp Kit, Cargo (Short) . . . . .	0490	00
3307 Bow and Tarp Kit, Cargo, Long Wheelbase . . . . .	0491	00
3307 Tarpaulin Extension Kit . . . . .	0492	00
3307 Dump Body Troop Seat and Tarpaulin Kit, Troop Seat and Side Racks . . . . .	0493	00
3307 Dump Body Troop Seat and Tarpaulin Kit, Tarpaulin . . . . .	0494	00
3307 Fire Extinguisher Kit . . . . .	0495	00
3307 Low Air Pressure Warning Light Kit . . . . .	0496	00
3307 Tachograph Kit . . . . .	0497	00

TABLE OF CONTENTS (Contd)

	WP	Sequence No.
3307 Air Hand Brake Kit . . . . .	0498	00
3307 Alternator Conversion Kit, 60 to 100 AMP . . . . .	0499	00
3307 Van Body Stabilizer Kit . . . . .	0500	00
3307 Mini-Lighting Kit, Wiring Leads, Brackets, and Mounting Hardware . . . . .	0501	00
3307 Mini-Lighting Kit, Wiring Leads, Lamp Assembly, Light Markers, and Mounting Hardware . . . . .	0502	00
3307 Convoy Warning Light Kit . . . . .	0503	00
3307 Convoy Warning Light Kit, Dump . . . . .	0504	00
3307 Convoy Warning Light Kit, Van . . . . .	0505	00
3307 M14/M16 Rifle Mounting Kit . . . . .	0506	00
3307 Front Bumper Step Kit . . . . .	0507	00
3307 Vehicle Tiedown Kits . . . . .	0508	00
3307 Tach Cable Interference Relief Kit . . . . .	0509	00
3307 Portable Decontamination Mounting Kit . . . . .	0510	00
3307 Cable Reel Kit . . . . .	0511	00
3307 Cable Reel Kit . . . . .	0512	00
3307 Cable Reel Kit . . . . .	0513	00
3307 Cable Reel Kit . . . . .	0514	00
3307 Cable Reel Kit . . . . .	0515	00
3307 Cable Reel Kit . . . . .	0516	00
3307 Raised Hood Kit . . . . .	0517	00
3307 Power Input Receptacle Kit . . . . .	0518	00
3307 Electric Wiper Kit, Motor, Arm, and Related Parts . . . . .	0519	00
3307 Electric Wiper Kit, Circuit Breaker and Wiring Harness . . . . .	0520	00
3307 Electric Wiper Kit, Hood Spacer and Bumper . . . . .	0521	00
Group 47 NON-ELECTRICAL GAGES		
4701 Tachometer and Shaft Assembly . . . . .	0522	00
4701 Speedometer and Shaft Assembly . . . . .	0523	00
4702 Air and Oil Pressure Indicators . . . . .	0524	00
Group 94 REPAIR PARTS KITS		
9401 Kits . . . . .	0525	00
Group 95 BULK ITEM		
9501 Bulk . . . . .	0526	00
Group 26 TOOLS AND TEST EQUIPMENT		
2604 Special Tool Kit, Unit Level . . . . .	0527	00
2604 Special Tool Kit, Direct Support . . . . .	0528	00
2604 Special Tool Kit, Direct Support . . . . .	0529	00
2604 Special Tool Kit, Direct Support . . . . .	0530	00
2604 Special Tool Kit, Direct Support . . . . .	0531	00
2604 Special Tool Kit, General Support . . . . .	0532	00
NATIONAL STOCK NUMBER INDEX . . . . .	0533	00
PART NUMBER INDEX . . . . .	0534	00

UNIT, DIRECT SUPPORT, AND GENERAL SUPPORT MAINTENANCE  
 REPAIR PARTS AND SPECIAL TOOLS LIST  
 TRUCK, 5-TON, 6X6, M809 SERIES TRUCKS (DIESEL)

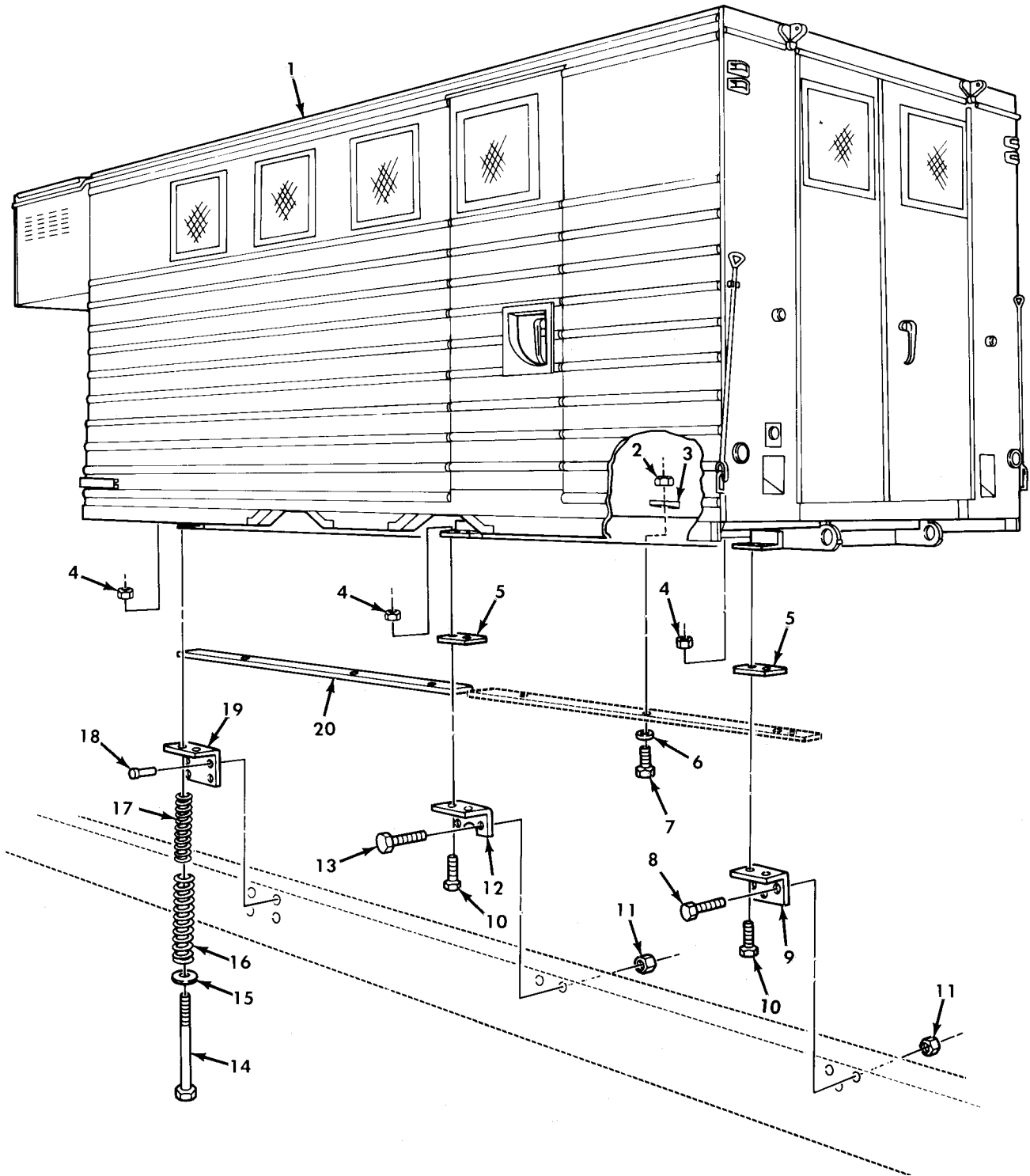


Figure 289. Van Body Assembly and Mounting Hardware.

(1) ITEM NO	(2) SMR CODE	(3) NSN	(4) CAGEC	(5) PART NUMBER	(6) DESCRIPTION AND USABLE ON CODE (UOC)	(7) QTY
GROUP 18 BODY,CAB,AND HOOD						
1812 SPECIAL PURPOSE BODIES						
FIG. 289 VAN BODY ASSEMBLY AND MOUNTING HARDWARE						
1	PFHHH	2510-01-135-4378	19207	8736696-1	BODY,VAN TRUCK.....	1
					UOC:632	
1	PFHHH	2510-01-135-4452	19207	8736696	BODY,VAN TRUCK.....	1
					UOC:630	
2	PAHZZ	5310-00-087-4652	96906	MS51922-17	NUT,SELF-LOCKING,HE.....	10
					UOC:630,632	
3	PAHZZ	5310-01-099-2550	57328	65003-S	WASHER,BEVEL.....	10
					UOC:630,632	
4	PAOZZ	5310-00-225-6408	96906	MS51922-53	NUT,SELF-LOCKING,HE.....	12
					UOC:630,632	
5	PAOZZ	5340-00-471-8635	19207	11593258	BRACKET,MOUNTING.....	4
					UOC:630,632	
6	PAHZZ	5310-00-080-6004	96906	MS27183-14	WASHER,FLAT.....	10
					UOC:630,632	
7	PAHZZ	5305-00-269-3240	80204	B1821BH038F150N	SCREW,CAP,HEXAGON H.....	10
					UOC:630,632	
8	PAFZZ	5305-00-719-5235	80204	B1821BH050F175N	SCREW,CAP,HEXAGON H.....	4
					UOC:630,632	
9	PFFZZ	5340-00-409-4018	19207	10871210	BRACKET,ANGLE.....	2
					UOC:630,632	
10	PAOZZ	5305-00-726-2552	80204	B1821BH063F225N	SCREW,CAP,HEXAGON H.....	8
					UOC:630,632	
11	PAFZZ	5310-00-877-5795	96906	MS21044N8	NUT,SELF-LOCKING,HE.....	8
					UOC:630,632	
12	PFFZZ	5340-00-231-0278	19207	10871207	BRACKET,ANGLE.....	2
					UOC:630,632	
13	PAFZZ	5305-00-226-7768	96906	MS90726-115	SCREW,CAP,HEXAGON H.....	4
					UOC:630,632	
14	PAOZZ	5306-00-512-9218	19207	7971653	BOLT,MACHINE.....	4
					UOC:630,632	
15	PAOZZ	5310-00-006-8149	96906	MS27183-22	WASHER,FLAT.....	4
					UOC:630,632	
16	PAOZZ	5360-00-737-2793	19207	7372793	SPRING,HELICAL,COMP.....	4
					UOC:630,632	
17	PAOZZ	5360-00-737-2792	19207	7372792	SPRING,HELICAL,COMP FRONT ANGLE BRACKET.....	4
					UOC:630,632	
18	PAFZZ	5320-01-223-1094	21450	189513	RIVET,SOLID.....	8
					UOC:630,632	
19	PAFZZ	5340-00-409-4019	19207	10871208	BRACKET,ANGLE.....	2
					UOC:630,632	
20	MHHZZ		19207	11677829-1	SILL,WOOD RIGHT,REAR,MAKE FROM WOOD,P/N 13219E0079.....	2
					UOC:630,632	
20	MHHZZ		19207	11677829-2	SILL,WOOD LEFT,REAR,MAKE FROM WOOD,P/N 13219E0079.....	2
					UOC:630,632	

END OF FIGURE

UNIT, DIRECT SUPPORT, AND GENERAL SUPPORT MAINTENANCE  
 REPAIR PARTS AND SPECIAL TOOLS LIST  
 TRUCK, 5-TON, 6X6, M809 SERIES TRUCKS (DIESEL)

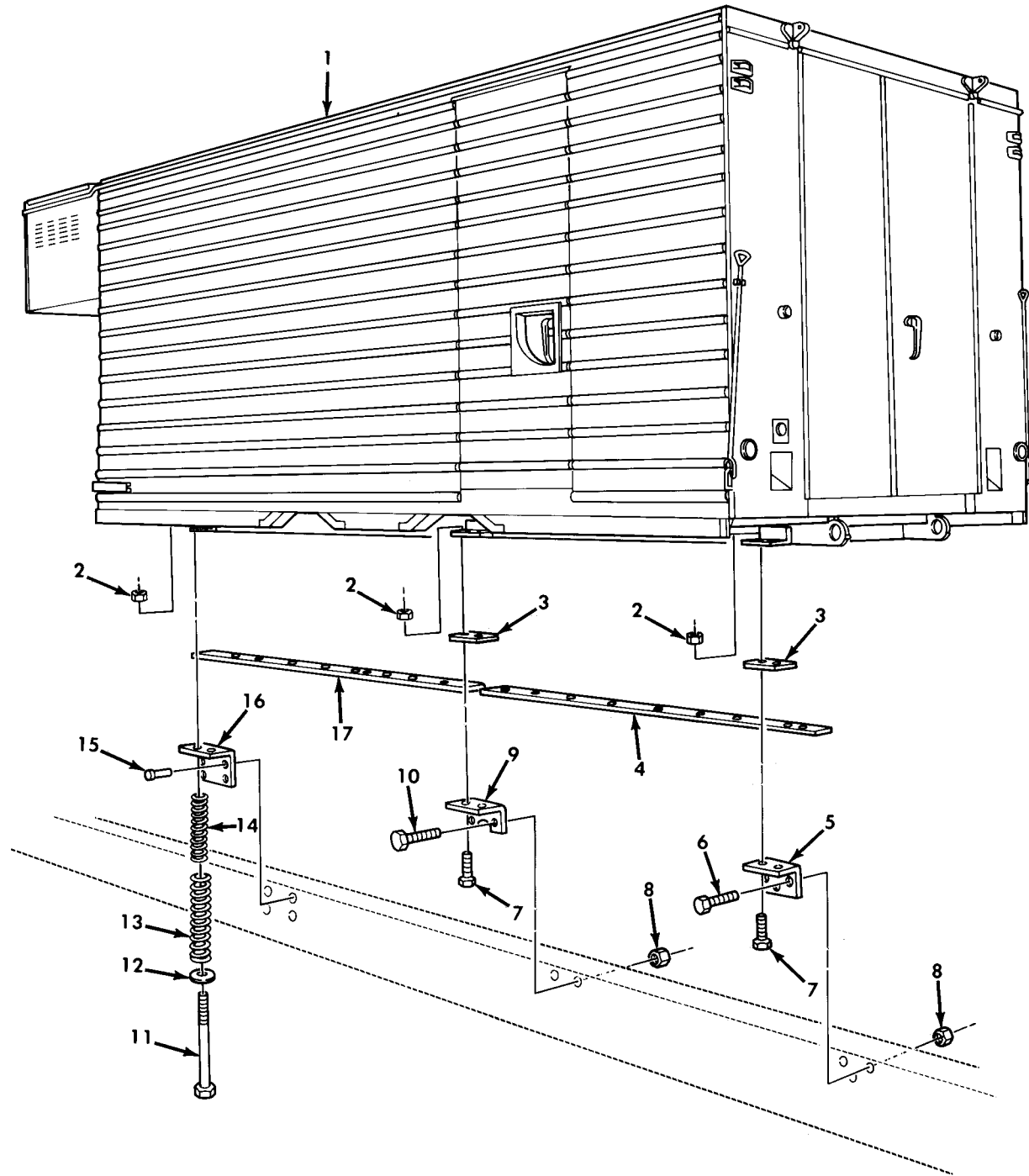


Figure 290. Van Body Assembly and Mounting Hardware.

(1) ITEM NO	(2) SMR CODE	(3) NSN	(4) CAGEC	(5) PART NUMBER	(6) DESCRIPTION AND USABLE ON CODE (UOC)	(7) QTY
GROUP 1812 SPECIAL PURPOSE BODIES						
FIG. 290 VAN BODY ASSEMBLY AND MOUNTING HARDWARE						
1	PFHHH	2510-01-158-3009	19207	8736697	BODY EXPANSIBLE VAN..... UOC: 631	1
2	PAOZZ	5310-00-982-5009	96906	MS21045-10	NUT, SELF-LOCKING, HE..... UOC: 631	12
3	PFOZZ	5340-00-471-8635	19207	11593258	BRACKET, MOUNTING..... UOC: 631	4
4	MHHZZ		19207	11593259	SILL, WOOD MAKE FROM WOOD, P/N 13219E0079..... UOC: 631	2
5	PFFZZ	5340-00-409-4018	19207	10871210	BRACKET, ANGLE..... UOC: 631	2
6	PAFZZ	5305-00-719-5235	80204	B1821BH050F175N	SCREW, CAP, HEXAGON H..... UOC: 631	4
7	PAOZZ	5305-00-726-2552	80204	B1821BH063F225N	SCREW, CAP, HEXAGON H..... UOC: 631	8
8	PAFZZ	5310-00-062-4954	96906	MS21045-8	NUT, SELF-LOCKING, HE..... UOC: 631	8
9	PFFZZ	5340-00-231-0278	19207	10871207	BRACKET, ANGLE..... UOC: 631	2
10	PAFZZ	5305-00-226-7768	96906	MS90726-115	SCREW, CAP, HEXAGON H..... UOC: 631	4
11	PAOZZ	5306-00-512-9218	19207	7971653	BOLT, MACHINE..... UOC: 631	4
12	PAOZZ	5310-00-006-8149	96906	MS27183-22	WASHER, FLAT..... UOC: 631	4
13	PAOZZ	5360-00-737-2793	19207	7372793	SPRING, HELICAL, COMP..... UOC: 631	4
14	PAOZZ	5360-00-737-2792	19207	7372792	SPRING, HELICAL, COMP..... UOC: 631	4
15	PAFZZ	5320-00-018-9512	19207	189512	RIVET, SOLID..... UOC: 631	8
16	PFFZZ	5340-00-409-4019	19207	10871208	BRACKET, ANGLE..... UOC: 631	2
17	MHHZZ		19207	11593257	SILL, WOOD RIGHT, MAKE FROM WOOD, P/N 13219E0079..... UOC: 631	1
17	MHHZZ		19207	11593257-1	SILL, WOOD LEFT, MAKE FROM WOOD, P/N 13219E0079..... UOC: 631	1

END OF FIGURE

UNIT, DIRECT SUPPORT, AND GENERAL SUPPORT MAINTENANCE  
 REPAIR PARTS AND SPECIAL TOOLS LIST  
 TRUCK, 5-TON, 6X6, M809 SERIES TRUCKS (DIESEL)

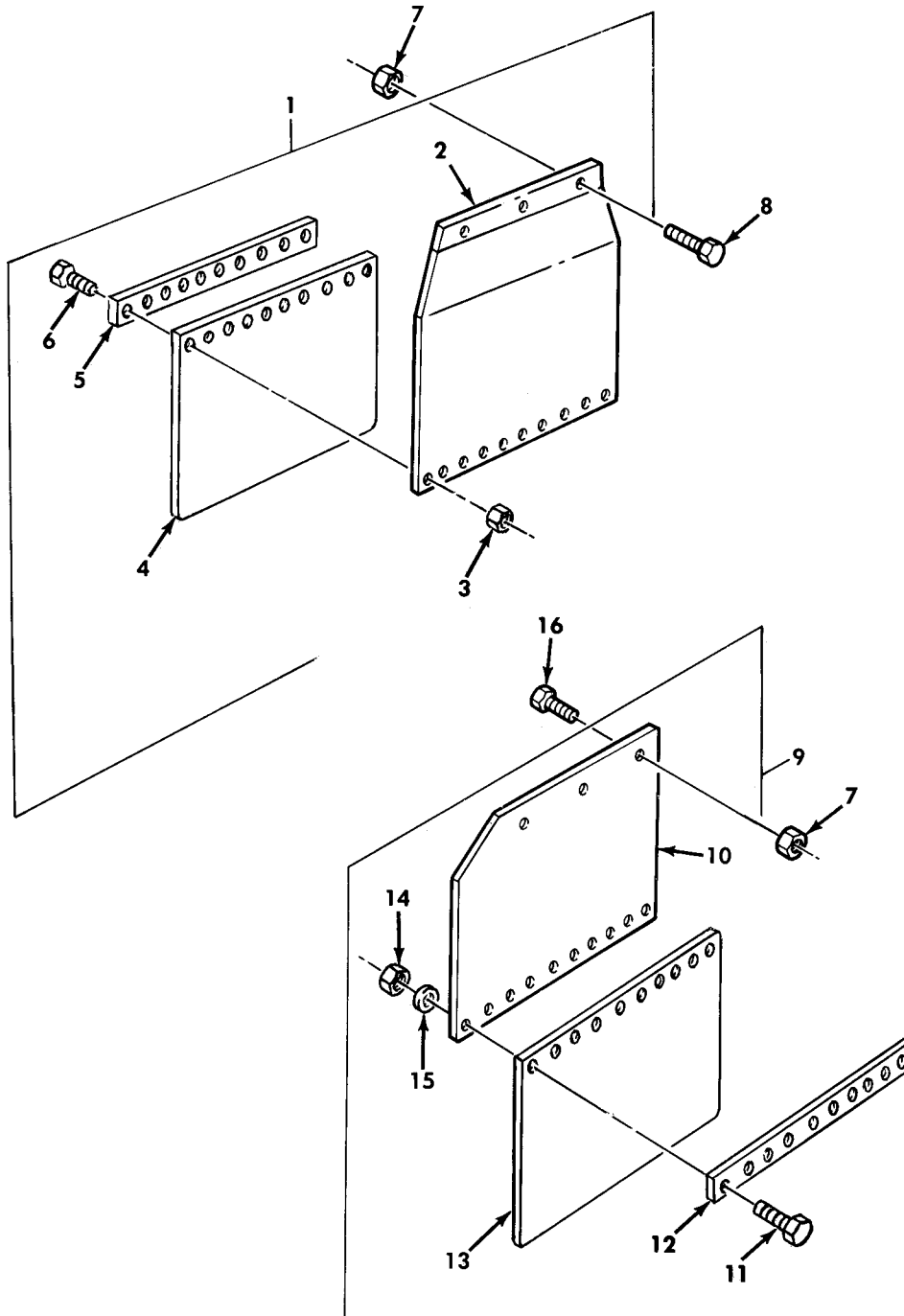


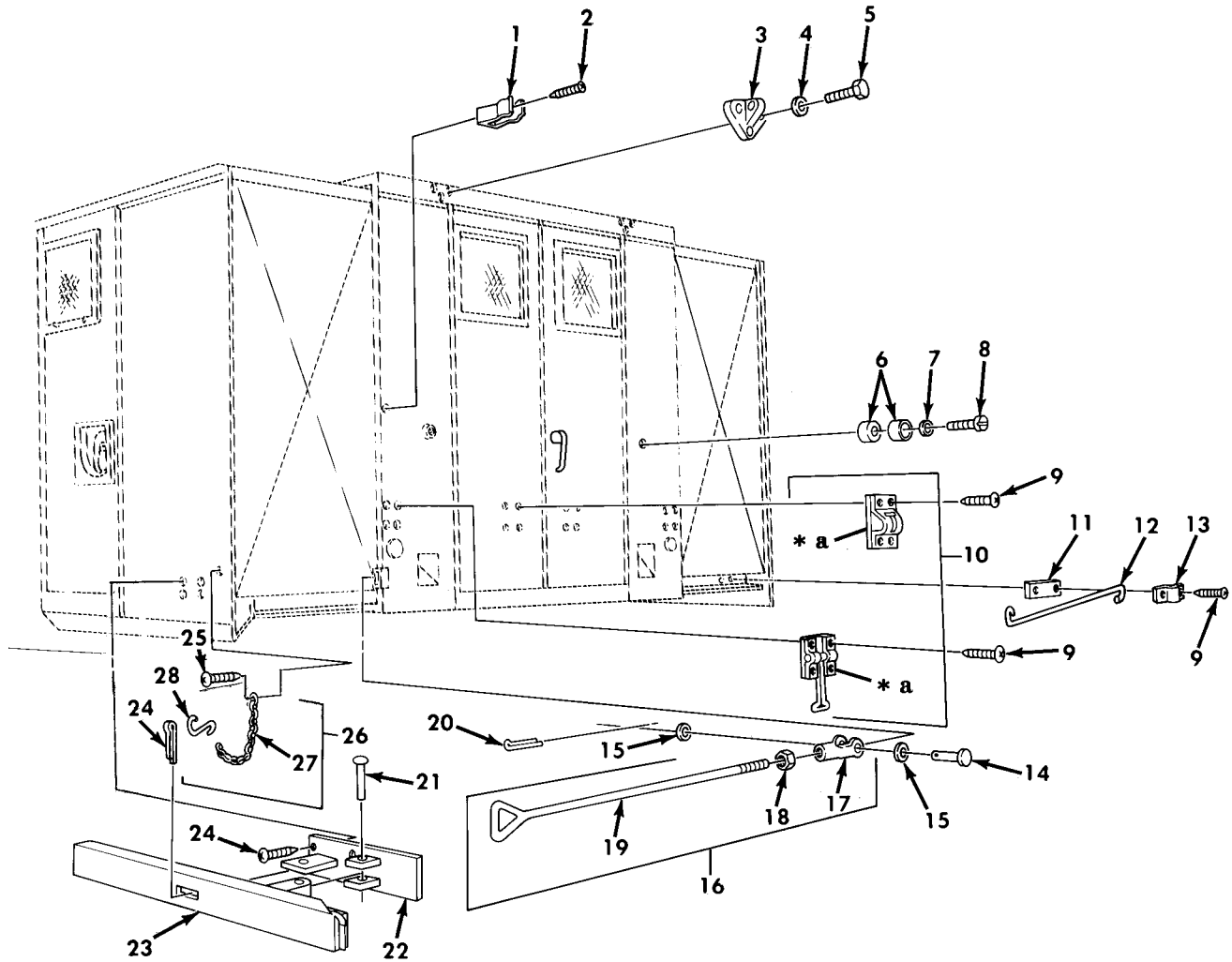
Figure 291. Van Splash Guard Assemblies.



(1) ITEM NO	(2) SMR CODE	(3) NSN	(4) CAGEC	(5) PART NUMBER	(6) DESCRIPTION AND USABLE ON CODE (UOC)	(7) QTY
GROUP 1812 SPECIAL PURPOSE BODIES						
FIG. 291 VAN SPLASH GUARD ASSEMBLIES						
1	A0000	2540-01-158-7169	19207	11677681	GUARD,SPLASH,VEHICU FORWARD REAR L.H..... UOC:630,632	1
1	A0000	2540-01-158-7170	19207	11677718	GUARD,SPLASH,VEHICU FORWARD REAR R.H..... UOC:630,632	1
2	PFOZZ	2540-01-160-7915	19207	11677726	.GUARD,SPLASH,VEHICU LEFT..... UOC:630,632	1
2	PFOZZ	2540-01-158-7092	19207	11677724	.GUARD,SPLASH,VEHICU RIGHT..... UOC:630,632	1
3	PAOZZ	5310-00-061-7325	96906	MS21045-4	.NUT,SLFLKG HEXAGON..... UOC:630,632	10
4	PAOZZ	2540-01-163-5170	19207	11677690	.GUARD,SPLASH,VEHICU LEFT FRONT.... UOC:630,632	1
4	PAOZZ	2540-00-169-2856	19207	11611632	.GUARD,SPLASH,VEHICU RIGHT FRONT... UOC:630,632	1
5	PAOZZ	5340-01-163-4777	19207	11677688	.RETAINER,SPLASH GUA LEFT FRONT.... UOC:630,632	1
6	PAOZZ	5305-00-068-0515	80204	B1821BH025F100N	.SCREW,CAP,HEXAGON H..... UOC:630,632	10
7	PAOZZ	5310-00-982-4908	96906	MS21045-6	NUT,SELF-LOCKING,HE..... UOC:630,631,632	12
8	PAOZZ	5305-00-269-3234	80204	B1821BH038F075N	SCREW,CAP,HEXAGON H..... UOC:630,632	6
9	A0000	2540-00-405-0212	19207	11593275-2	GUARD,SPLASH,VEHICU LEFT REAR..... UOC:630,631,632	1
9	A0000		19207	11593275-1	GUARD,SPLASH,VEHICU RIGHT REAR..... UOC:631	1
9	A0000	2540-01-158-7171	19207	11677678	GUARD,SPLASH,VEHICU RIGHT REAR..... UOC:630,632	1
10	PBOZZ	2540-01-158-7093	19207	11677679	.GUARD,SPLASH,VEHICU RIGHT REAR.... UOC:630,632	1
10	PFOZZ	2540-01-110-4057	19207	11593277	.GUARD,SPLASH,VEHICU LEFT REAR..... UOC:630,631,632	1
10	PFOZZ	2510-01-115-2286	19207	11593276	.SHIELD,APRON RIGHT REAR..... UOC:631	1
11	PAOZZ	5305-00-225-3843	80204	B1821BH025C100N	.SCREW,CAP,HEXAGON H..... UOC:630,631,632	10
12	PAOZZ	2510-00-409-3992	19207	11611633	.RETAINER,SPLASH GUA..... UOC:630,631,632	1
13	PAOZZ	2540-00-169-2856	19207	11611632	.GUARD,SPLASH,VEHICU..... UOC:631	1
14	PAOZZ	5310-00-761-6882	96906	MS51967-2	.NUT,PLAIN,HEXAGON..... UOC:630,632	10
15	PAOZZ	5310-00-582-5965	96906	MS35338-44	.WASHER,LOCK..... UOC:630,632	10
16	PAOZZ	5305-00-269-3240	80204	B1821BH038F150N	SCREW,CAP,HEXAGON H..... UOC:630,632	6
16	PAOZZ	5305-00-225-3843	80204	B1821BH025C100N	SCREW,CAP,HEXAGON H SPLASH GUARD... UOC:631	6
16	PAOZZ	5305-00-269-2803	96906	MS90726-60	SCREW,CAP,HEXAGON H..... UOC:631,632	6

END OF FIGURE

UNIT, DIRECT SUPPORT, AND GENERAL SUPPORT MAINTENANCE  
 REPAIR PARTS AND SPECIAL TOOLS LIST  
 TRUCK, 5-TON, 6X6, M809 SERIES TRUCKS (DIESEL)



**\* a PART OF ITEM 10**

*Figure 292. Van Side Lock Handle, Lifting Brackets, Rod Retainer, and Related Parts.*

(1) ITEM NO	(2) SMR CODE	(3) NSN	(4) CAGEC	(5) PART NUMBER	(6) DESCRIPTION AND USABLE ON CODE (UOC)	(7) QTY
GROUP 1812 SPECIAL PURPOSE BODIES						
FIG. 292 VAN SIDE LOCK HANDLE, LIFTING BRACKETS, ROD RETAINER, AND RELATED PARTS						
1	PAOZZ	5340-00-699-8463	19207	7539185	CLIP, SPRING TENSION..... UOC: 630, 631, 632	4
2	PAOZZ	5305-00-432-4163	96906	MS51861-24	SCREW, TAPPING..... UOC: 630, 631, 632	4
3	PAOZZ	5340-00-231-0210	19207	8380499	BRACKET, LIFTING..... UOC: 630, 631, 632	2
4	PAOZZ	5310-00-820-6653	24617	103325	WASHER, LOCK..... UOC: 630, 631, 632	6
5	PAOZZ	5305-00-724-5910	96906	MS90725-162	SCREW, CAP, HEXAGON H REAR LIFTING BRACKET..... UOC: 630, 631, 632	6
6	PAOZZ	5340-00-766-3330	19207	7535643	BUMPER, NONMETALLIC..... UOC: 630, 631, 632	4
7	PAOZZ	5310-00-081-4219	96906	MS27183-12	WASHER, FLAT..... UOC: 630, 631, 632	2
8	PAOZZ	5305-01-144-1625	96906	MS51851-112	SCREW, TAPPING..... UOC: 630, 631, 632	2
9	PAOZZ	5305-00-432-4203	96906	MS51861-47	SCREW, TAPPING..... UOC: 630, 631, 632	24
10	PAOZZ	5340-00-302-1840	19207	8376986	HOLDER, DOOR REAR DOOR..... UOC: 630, 631, 632	2
11	PAOZZ	5365-00-421-9697	19207	7084772	SPACER, PLATE..... UOC: 630, 631, 632	4
12	PAOZZ	5340-00-421-3990	19207	8735435	HOLDER, DOOR REAR DOOR..... UOC: 630, 631, 632	4
13	PAOZZ	5340-00-158-3889	19207	8735425	STRAP, RETAINING..... UOC: 630, 631, 632	4
14	PAOZZ	5315-00-957-2399	96906	MS20392-5C35	PIN, STRAIGHT, HEADED..... UOC: 630, 631, 632	4
15	PAOZZ	5310-00-087-7493	96906	MS27183-13	WASHER, FLAT..... UOC: 630, 631, 632	8
16	PAOZZ	2540-00-417-2758	19207	10937607	HANDLE ASSEMBLY, LOC..... UOC: 630, 631, 632	4
17	PAOZZ	5340-00-985-0823	96906	MS35812-4	.CLEVIS, ROD END..... UOC: 630, 631, 632	1
18	PAOZZ	5310-00-732-0559	96906	MS51968-8	.NUT, PLAIN, HEXAGON..... UOC: 630, 631, 632	1
19	PAOZZ	5342-01-181-9445	19207	10937560	.ROD, LOCKING..... UOC: 630, 631, 632	1
20	PAOZZ	5315-00-842-3044	96906	MS24665-283	PIN, COTTER..... UOC: 630, 631, 632	4
21	PAOZZ	5320-00-418-0985	19207	10937579-1	RIVET, SOLID..... UOC: 630, 631, 632	4
22	PAOZZ	2510-00-421-3944	19207	10937568	BASE, SIDE LOCK, VAN..... UOC: 630, 631, 632	4
23	PAOZZ	2540-00-417-2722	19207	11607374	HANDLE ASSEMBLY..... UOC: 630, 631, 632	4
24	PAOZZ	5315-00-234-1848	96906	MS24665-629	PIN, COTTER..... UOC: 630, 631, 632	1
25	PAOZZ	5305-00-432-4254	96906	MS51861-69	SCREW, TAPPING..... UOC: 630, 631, 632	16
26	PAOZZ	4010-00-445-7212	19207	10937632	CHAIN ASSEMBLY, SING..... UOC: 630, 631, 632	4
27	MOOZZ		80244	42-C-15120-205	.CHAIN MAKE FROM CHAIN, WELDLESS, P/N 819906..... UOC: 630, 631, 632	1
28	PAOZZ	4030-00-514-4420	21450	593416	.HOOK, CHAIN, S.....	1

(1) ITEM NO	(2) SMR CODE	(3) NSN	(4) CAGEC	(5) PART NUMBER	(6) DESCRIPTION AND USABLE ON CODE (UOC)	(7) QTY
					UOC: 630, 631, 632	

END OF FIGURE



UNIT, DIRECT SUPPORT, AND GENERAL SUPPORT MAINTENANCE  
 REPAIR PARTS AND SPECIAL TOOLS LIST  
 TRUCK, 5-TON, 6X6, M809 SERIES TRUCKS (DIESEL)

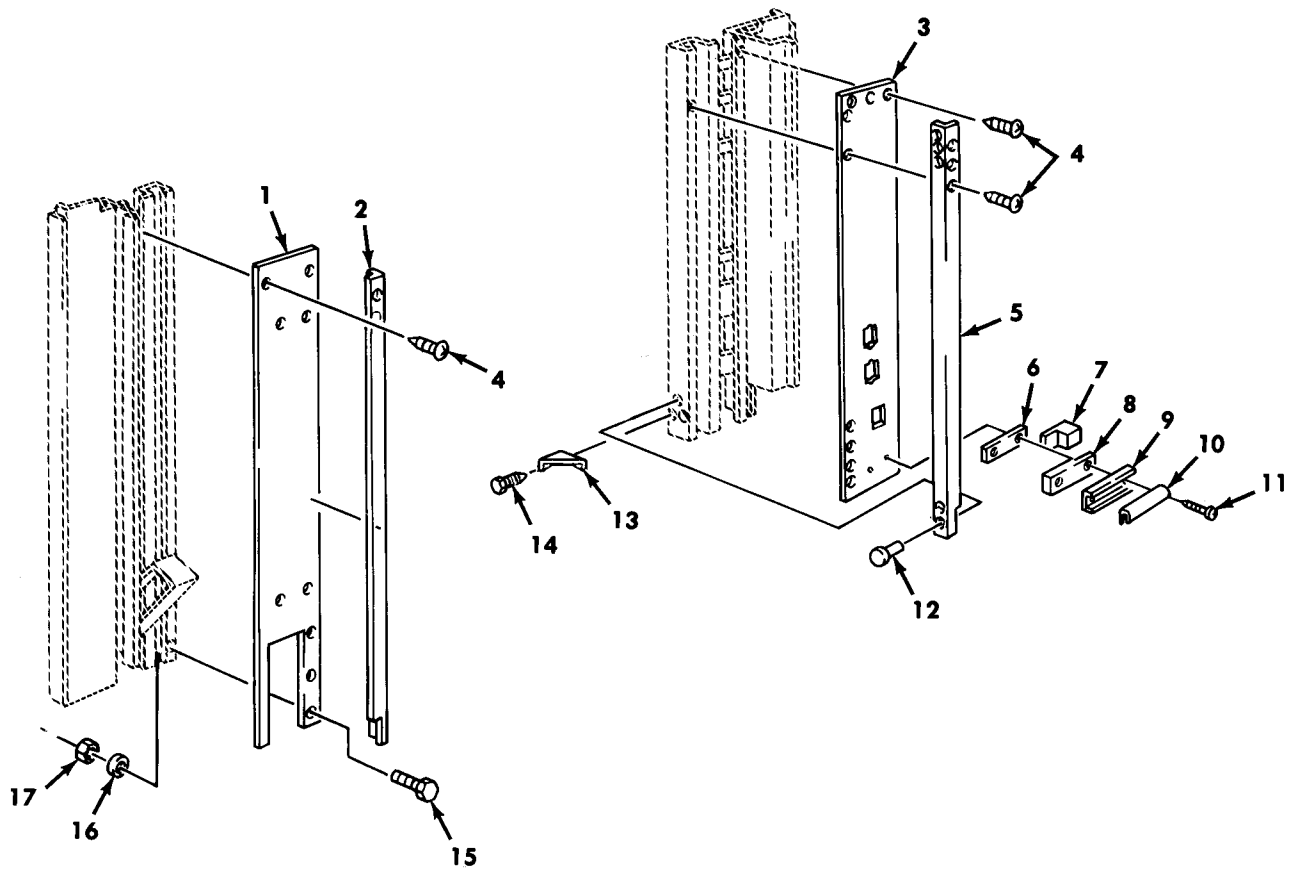


Figure 293. Van Rear Wall Panels and Mounting Hardware.

(1) ITEM NO	(2) SMR CODE	(3) NSN	(4) CAGEC	(5) PART NUMBER	(6) DESCRIPTION AND USABLE ON CODE (UOC)	(7) QTY
GROUP 1812 SPECIAL PURPOSE BODIES						
FIG. 293 VAN REAR WALL PANELS AND MOUNTING HARDWARE						
1	PPFZZ	2510-01-120-8448	19207	11677712	PANEL,VAN BODY RIGHT SIDE..... UOC:630,632	1
2	PBFZZ	2590-01-227-7944	19207	8380461	BEZEL,AUTOMOTIVE TR RIGHT SIDE..... UOC:630,632	1
3	PAFZZ	2510-01-120-8449	19207	11677680	PANEL,BODY,VEHICULA LEFT SIDE..... UOC:630,632	1
4	PAFZZ	5305-00-433-3685	96906	MS51861-37C	SCREW,TAPPING.....	70
5	PBFZZ	2590-01-186-9585	19207	8380462	BEZEL,AUTOMOTIVE TR LEFT SIDE..... UOC:630,632	1
6	MOOZZ		19207	7535591	SPACER,SOFTWOOD MAKE FROM PLYWOOD, P/N NN-P-530..... UOC:630,632	2
7	PFOZZ	5330-01-158-6289	19207	7535590	SEAL,NONMETALLIC SP..... UOC:630,632	2
8	PFOZZ	5340-01-194-6474	19207	7535593	PLATE,MENDING..... UOC:630,632	2
9	PFOZZ	5340-01-194-5298	19207	7535592	STRAP,RETAINING..... UOC:630,632	2
10	MOOZZ		19207	7534653-AR	SEAL,REAR DOOR MAKE FROM SEAL,P/N 7534653..... UOC:630,632	2
11	PAOZZ	5305-00-432-4253	96906	MS51861-67	SCREW,TAPPING..... UOC:630,632	4
12	PAFZZ	5320-00-584-1285	53551	RV200-6-2	RIVET,BLIND..... UOC:630,632	16
13	PAFZZ	2590-01-120-8447	19207	8380412	GUSSET,CORNER,WALL..... UOC:630,632	2
14	PAFZZ	5305-00-433-3711	96906	MS51861-35C	SCREW,TAPPING..... UOC:630,632	8
15	PAFZZ	5305-00-716-8195	96906	MS90725-150	SCREW,CAP,HEXAGON H RIGHT REAR..... UOC:630,632	2
15	PAFZZ	5305-00-724-7219	80204	B1821BH063C125N	SCREW,CAP,HEXAGON H LEFT REAR..... UOC:630,632	2
16	PAFZZ	5310-00-820-6653	96906	MS35338-50	WASHER,LOCK..... UOC:630,632	4
17	PAFZZ	5310-00-763-8920	96906	MS51967-20	NUT,PLAIN,HEXAGON..... UOC:630,632	4

END OF FIGURE

UNIT, DIRECT SUPPORT, AND GENERAL SUPPORT MAINTENANCE  
 REPAIR PARTS AND SPECIAL TOOLS LIST  
 TRUCK, 5-TON, 6X6, M809 SERIES TRUCKS (DIESEL)

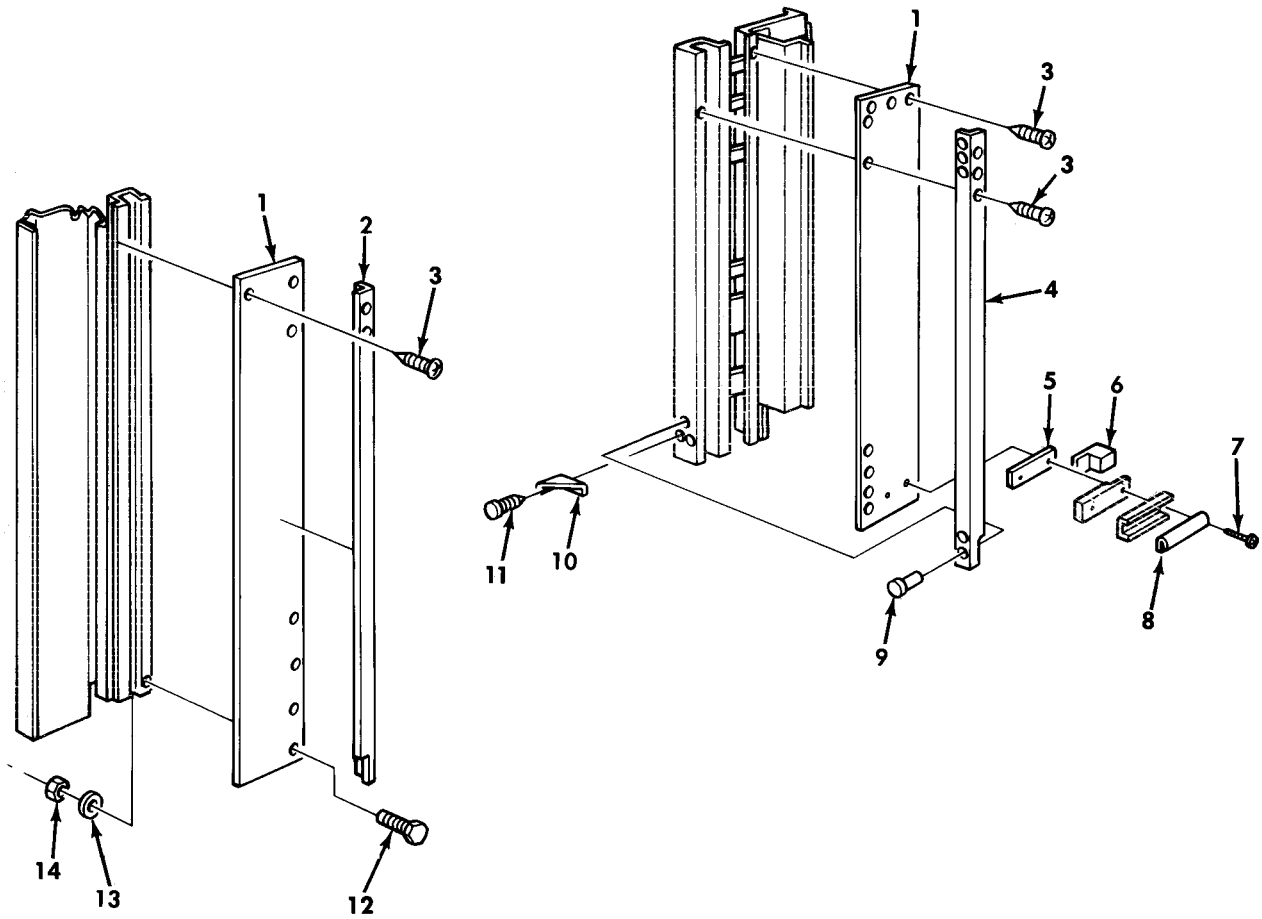


Figure 294. Van Rear Wall Panels and Mounting Hardware.



(1) ITEM NO	(2) SMR CODE	(3) NSN	(4) CAGEC	(5) PART NUMBER	(6) DESCRIPTION AND USABLE ON CODE (UOC)	(7) QTY
GROUP 1812 SPECIAL PURPOSE BODIES						
FIG. 294 VAN REAR WALL PANELS AND MOUNTING HARDWARE						
1	XBFZZ		19207	11648378	PANEL,BODY,VEHICULA..... UOC:631	2
2	PBFZZ	2590-01-227-7944	19207	8380461	BEZEL,AUTOMOTIVE TR..... UOC:631	2
3	PAFZZ		96906	MS51861-37	SCREW,TAPPING,THREA..... UOC:631	70
4	PBFZZ	2590-01-186-9585	19207	8380462	BEZEL,AUTOMOTIVE TR..... UOC:631	1
5	MOOZZ		19207	7535591	SPACER,SOFTWOOD MAKE FROM PLYWOOD, P/N NN-P-530..... UOC:631	2
6	PFOZZ	5330-01-158-6289	19207	7535590	SEAL,NONMETALLIC SP..... UOC:631	2
7	PAOZZ	5305-00-432-4170	96906	MS51861-35	SCREW,TAPPING..... UOC:631	4
8	MOOZZ		19207	7534653-AR	SEAL,REAR DOOR MAKE FROM SEAL,P/N 7534653..... UOC:631	2
9	PAFZZ	5320-00-584-1285	53551	RV200-6-2	RIVET,BLIND..... UOC:631	2
10	PAFZZ	2590-01-120-8447	19207	8380412	GUSSET,CORNER,WALL..... UOC:631	2
11	XDFZZ		89346	111633	SCREW,TAPPING..... UOC:631	8
12	PAFZZ	5305-00-726-2543	96906	MS90727-160	SCREW,CAP,HEXAGON H..... UOC:631	4
13	PAFZZ	5310-00-820-6653	96906	MS35338-50	WASHER,LOCK..... UOC:631	4
14	PAFZZ	5310-00-763-8905	96906	MS51968-20	NUT,PLAIN,HEXAGON..... UOC:631	4

END OF FIGURE