

**ARMY TM 9-2320-365-24P**  
**AIR FORCE T.O. 36A12-1B-1095-24**

\*SUPERSEDES COPY DATED JUNE 1998

---

**UNIT, DIRECT SUPPORT, AND  
GENERAL SUPPORT MAINTENANCE  
REPAIR PARTS AND SPECIAL TOOLS LIST  
FOR  
M1078 SERIES, 2-1/2-TON, 4X4,  
LIGHT MEDIUM TACTICAL VEHICLE (LMTV)**

| MODEL                           | NSN              | EIC |
|---------------------------------|------------------|-----|
| TRK, CAR., LMTV, M1078          |                  |     |
| W/WN                            | 2320-01-360-1898 | BHH |
| W/O WN                          | 2320-01-354-3385 | BHD |
| TRK, VAN, LMTV, M1079           |                  |     |
| W/WN                            | 2320-01-360-1891 | BHG |
| W/O WN                          | 2320-01-354-3384 | BHE |
| TRK, CHAS, LMTV, M1080          | 2320-01-353-9098 | BHC |
| TRK, CAR., LMTV, AIRDROP, M1081 |                  |     |
| W/WN                            | 2320-01-360-1899 | BHJ |
| W/O WN                          | 2320-01-355-3064 | BHF |

DISTRIBUTION STATEMENT A. Approved for public release; distribution is unlimited.

---

HEADQUARTERS, DEPARTMENTS OF THE ARMY AND THE AIR FORCE

**31 JULY 2001**

LIST OF EFFECTIVE PAGES

Dates of issue for original and changed pages are:

Original.....31 July 2001

TOTAL NUMBER OF PAGES IS 1168, TOTAL NUMBER OF FIGURES IS 291,  
CONSISTING OF THE FOLLOWING:

| <b>Page/WP<br/>No.</b>     | <b>*Change<br/>No.</b> |
|----------------------------|------------------------|
| Cover                      | 0                      |
| A                          | 0                      |
| i thru x                   | 0                      |
| 1 thru 9                   | 0                      |
| Figure 1 - Figure 288      | 0                      |
| 1-1 thru 288-1             | 0                      |
| Kits-1 thru Kits-2         | 0                      |
| Figure 289                 | 0                      |
| 289-1                      | 0                      |
| Bulk-1 thru Bulk-4         | 0                      |
| Figure 290 thru Figure 291 | 0                      |
| 290-1 thru 291-1           | 0                      |
| I-1 thru I-293             | 0                      |

\*Zero in this column indicates an original page or work package.

TECHNICAL MANUAL  
NO. 9-2320-365-24P

TECHNICAL ORDER  
NO. 36A12-1B-1095-24

UNIT, DIRECT SUPPORT, AND  
GENERAL SUPPORT MAINTENANCE  
REPAIR PARTS AND SPECIAL TOOLS LIST  
FOR

**M1078 SERIES, 2-1/2-TON, 4X4  
LIGHT MEDIUM TACTICAL VEHICLE (LMTV)**

| MODEL                                   | NSN              | EIC |
|-----------------------------------------|------------------|-----|
| Trk, Car., LMTV, M1078<br>W/WN          | 2320-01-360-1898 | BHH |
| W/O WN                                  | 2320-01-354-3385 | BHD |
| TRK, VAN, LMTV, M1079<br>W/WN           | 2320-01-360-1891 | BHG |
| W/O WN                                  | 2320-01-354-3384 | BHE |
| Trk, Chas, LMTV, M1080                  | 2320-01-353-9098 | BHC |
| Trk, Car., LMTV, AIRDROP, M1081<br>W/WN | 2320-01-360-1899 | BHJ |
| W/O WN                                  | 2320-01-355-3064 | BHF |

**REPORTING ERRORS AND RECOMMENDING IMPROVEMENTS**

You can help improve this manual. If you find any mistakes or if you know a way to improve the procedures, please let us know. Submit your DA Form 2028 (Recommended Changes to Equipment Technical Publications, through the Internet, on the Army Electronic Product Support (AEPS) website. The internet address is <http://aeps.ria.army.mil>. If you need a password, scroll down and click on "ACCESS REQUEST FORM". The DA Form 2028 is located in the ONLINE FORMS PROCESSING section of the AEPS. Fill out the form and click on SUBMIT. Using this form on the AEPS will enable us to respond quicker to your comments and better manage the DA Form 2028 program. You may also mail, fax or Email your letter or DA Form 2028 direct to: AMSTA-LC-CI/TECH PUBS, TACOM-RI, 1 Rock Island Arsenal, Rock Island, IL 61299-7630. The email address is TACOM-TECH-PUBS @ria.army.mil. The fax number is DSN 793-0726 or Commercial (309) 782-0726.

**DISTRIBUTION STATEMENT A.** Approved for public release; distribution is unlimited.

\*This publication supercedes TM 9-2320-365-24p DATED 17 June 1998.

## TABLE OF CONTENTS

|             | Page                                                       | Illus./<br>Figure |
|-------------|------------------------------------------------------------|-------------------|
| Section I.  | INTRODUCTION                                               |                   |
| Section II. | REPAIR PARTS LIST                                          |                   |
| Group 01    | Engine                                                     |                   |
|             | 0100 Dressed Engine with Container.....                    | 1-1 1             |
|             | 0100 Engine Mounts.....                                    | 2-1 2             |
|             | 0100 Engine Brackets.....                                  | 3-1 3             |
|             | 0101 Cylinder Head with Valves and Gasket.....             | 4-1 4             |
|             | 0101 Cylinder Block.....                                   | 5-1 5             |
|             | 0102 Crankshaft.....                                       | 6-1 6             |
|             | 0102 Pulley and Damper.....                                | 7-1 7             |
|             | 0103 Flywheel, Housing and Flex Plates.....                | 8-1 8             |
|             | 0104 Piston and Push Rods.....                             | 9-1 9             |
|             | 0105 Idler Gear.....                                       | 10-1 10           |
|             | 0105 Camshaft.....                                         | 11-1 11           |
|             | 0105 Front and Side Housing Covers and Cam Followers.....  | 12-1 12           |
|             | 0105 Valve Cover and Gasket.....                           | 13-1 13           |
|             | 0105 Rocker Arms.....                                      | 14-1 14           |
|             | 0105 Push Rods, Valves, Valve Springs.....                 | 15-1 15           |
|             | 0106 Oil Cooler.....                                       | 16-1 16           |
|             | 0106 Oil Pan and Oil Pump.....                             | 17-1 17           |
|             | 0106 Oil Hoses and Tubes.....                              | 18-1 18           |
|             | 0106 Engine Oil Sampling Valve.....                        | 19-1 19           |
|             | 0106 Engine Oil Filter and Filter Base.....                | 20-1 20           |
|             | 0106 Engine Oil Dipstick and Filler Tube.....              | 21-1 21           |
|             | 0106 Crankcase Breather.....                               | 22-1 22           |
|             | 0108 Inlet Manifold, Gasket and Cover.....                 | 23-1 23           |
|             | 0108 Exhaust Manifold.....                                 | 24-1 24           |
| Group 03    | Fuel System                                                |                   |
|             | 0301 Fuel Injector.....                                    | 25-1 25           |
|             | 0304 Air Cleaner.....                                      | 26-1 26           |
|             | 0305 Turbocharger.....                                     | 27-1 27           |
|             | 0305 Charge Air Cooler, Pipes, Brackets and Hoses.....     | 28-1 28           |
|             | 0306 Fuel Regulating Valve, Tubes, Fittings and Hoses..... | 29-1 29           |
|             | 0306 Fuel Tank, Clamps and Brackets.....                   | 30-1 30           |
|             | 0308 Governor and Fuel Transfer.....                       | 31-1 31           |
|             | 0308 Fuel Control Linkage.....                             | 32-1 32           |
|             | 0309 Fuel Filter.....                                      | 33-1 33           |
|             | 0309 Fuel/Water Separator.....                             | 34-1 34           |
|             | 0311 Ether Starting Aid.....                               | 35-1 35           |
|             | 0312 Accelerator, Hand Throttle and Linkage.....           | 36-1 36           |
| Group 04    | Exhaust System                                             |                   |
|             | 0401 Exhaust Pipe Heat Shield.....                         | 37-1 37           |
|             | 0401 Exhaust Pipes, Brackets and Clamps.....               | 38-1 38           |
|             | 0401 Muffler, Ejector, Clamps and Brackets.....            | 39-1 39           |
|             | 0401 Muffler Heat Shield, Clamps and Resilient Mounts..... | 40-1 40           |
| Group 05    | Cooling System                                             |                   |
|             | 0501 Radiator, Overflow Tank, Hoses and Fittings.....      | 41-1 41           |

|                                                                           | Page | Illus./<br>Figure |
|---------------------------------------------------------------------------|------|-------------------|
| Group 05                                                                  |      |                   |
| Cooling System (continued)                                                |      |                   |
| 0502 Radiator Fan Shroud .....                                            | 42-1 | 42                |
| 0503 Thermostat and Cooling Tubes .....                                   | 43-1 | 43                |
| 0504 Water Pump and Drive.....                                            | 44-1 | 44                |
| 0505 Engine Fan and Clutch Assembly.....                                  | 45-1 | 45                |
| Group 06                                                                  |      |                   |
| Electrical System                                                         |      |                   |
| 0601 100 AMP Alternator, Brackets and Belt.....                           | 46-1 | 46                |
| 0603 100 AMP Voltage Regulator .....                                      | 47-1 | 47                |
| 0603 M0017703MD Starter and Solenoid .....                                | 48-1 | 48                |
| 0603 M0017703ME Starter and Solenoid.....                                 | 49-1 | 49                |
| 0603 Auxiliary Starter Solenoid .....                                     | 50-1 | 50                |
| 0606 Fuel Shutoff Solenoid .....                                          | 51-1 | 51                |
| 0607 Instrument Panel.....                                                | 52-1 | 52                |
| 0607 Auxiliary Panel and Switches .....                                   | 53-1 | 53                |
| 0607 WTEC II Dashboard Cable Assembly and Power Distribution Panel .....  | 54-1 | 54                |
| 0607 WTEC III Dashboard Cable Assembly and Power Distribution Panel ..... | 55-1 | 55                |
| 0608 Turn Signal Control .....                                            | 56-1 | 56                |
| 0608 Flasher Unit.....                                                    | 57-1 | 57                |
| 0608 Solenoid Valve Assembly .....                                        | 58-1 | 58                |
| 0608 CTIS Electronic Control Unit, ECU Dimmer Module, .....               | 59-1 | 59                |
| and Frequency ECU                                                         |      |                   |
| 0608 100A Reverse Polarity Relay and Starter Shunt.....                   | 60-1 | 60                |
| 0609 Headlamp Assembly.....                                               | 61-1 | 61                |
| 0609 Composite Taillight Assembly .....                                   | 62-1 | 62                |
| 0609 Cab and Door Clearance and Marker Lights.....                        | 63-1 | 63                |
| 0609 Chassis Clearance and Marker Lights .....                            | 64-1 | 64                |
| 0609 Backup Light .....                                                   | 65-1 | 65                |
| 0609 Blackout Drive Light .....                                           | 66-1 | 66                |
| 0609 Composite Front Light Assembly .....                                 | 67-1 | 67                |
| 0610 Sensors, Switches and Transducers.....                               | 68-1 | 68                |
| 0610 Air Brakes Pneumatic Switch .....                                    | 69-1 | 69                |
| 0611 Horn.....                                                            | 70-1 | 70                |
| 0612 Batteries, Box, Guard and Cables .....                               | 71-1 | 71                |
| 0613 Engine Cable Routing Clamps and Insulators .....                     | 72-1 | 72                |
| 0613 Engine Control Cable Assembly.....                                   | 73-1 | 73                |
| 0613 STE/ICE Cable Assembly.....                                          | 74-1 | 74                |
| 0613 12 Pin Intervehicle Cable.....                                       | 75-1 | 75                |
| 0613 Transmission Wiring Harness .....                                    | 76-1 | 76                |
| 0613 Transmission Harness.....                                            | 77-1 | 77                |
| 0613 WTEC III Transmission Wiring Harness .....                           | 78-1 | 78                |
| 0613 Windshield Washer Pump/EMI Cable .....                               | 79-1 | 79                |
| 0613 7 Pin Intervehicle Cable Assembly .....                              | 80-1 | 80                |
| 0613 Cab Cable Routing Clamps and Brackets .....                          | 81-1 | 81                |
| 0613 Warning Light Cable Assembly.....                                    | 82-1 | 82                |
| 0613 Door and Cab Marker Light Cable Assembly.....                        | 83-1 | 83                |
| 0613 Air Drop Cab Clearance and Marker Lights Lower .....                 | 84-1 | 84                |
| Cable Assembly                                                            |      |                   |
| 0613 Air Drop Cab Clearance and Marker Lights Upper.....                  | 85-1 | 85                |
| Cable Assembly                                                            |      |                   |
| 0613 Winch Control Cable Assembly .....                                   | 86-1 | 86                |
| 0613 Rear Lights Cable Assembly.....                                      | 87-1 | 87                |

|                                                                            | Page  | Illus./<br>Figure |
|----------------------------------------------------------------------------|-------|-------------------|
| Group 06 Electrical System (continued)                                     |       |                   |
| 0613 Front Lights Cable Assembly.....                                      | 88-1  | 88                |
| 0613 Start and Charge Cable Assembly.....                                  | 89-1  | 89                |
| 0613 PTO Cable Assembly .....                                              | 90-1  | 90                |
| 0613 Door Ajar, Marker and Blackout Control Cable Assembly .....           | 91-1  | 91                |
| 0613 Windshield Wiper EMI Cable Assembly.....                              | 92-1  | 92                |
| 0613 Chemical Kit Cable Assembly.....                                      | 93-1  | 93                |
| 0613 Starter Ground Cable Assembly.....                                    | 94-1  | 94                |
| 0613 24V Reverse Polarity Relay Cable Assembly .....                       | 95-1  | 95                |
| 0613 24V Alternator Cable Assembly .....                                   | 96-1  | 96                |
| 0613 24V Power Distribution Panel Cable Assembly .....                     | 97-1  | 97                |
| 0613 12V Power Distribution Panel Cable Assembly .....                     | 98-1  | 98                |
| 0613 Power Distribution Panel Ground Cable Assembly .....                  | 99-1  | 99                |
| 0613 Starter Power Cable Assembly .....                                    | 100-1 | 100               |
| 0613 Battery Ground Cable Assembly .....                                   | 101-1 | 101               |
| 0613 12V Alternator Cable Assembly .....                                   | 102-1 | 102               |
| 0613 12V Reverse Polarity Relay Cable Assembly .....                       | 103-1 | 103               |
| 0613 Clearance Light Cable Assembly.....                                   | 104-1 | 104               |
| 0613 Starter to Chassis Ground Cable and Clamps .....                      | 105-1 | 105               |
| 0613 CTIS Cable Assembly .....                                             | 106-1 | 106               |
| 0613 Auxillary Panel Cable Assembly.....                                   | 107-1 | 107               |
| Group 07 Transmission                                                      |       |                   |
| 0705 WTEC II Transmission Electronic Control Unit.....                     | 108-1 | 108               |
| 0705 WTEC II Vehicle Interface Module.....                                 | 109-1 | 109               |
| 0705 WTEC III Transmission Electronic Control Unit.....                    | 110-1 | 110               |
| 0705 WTEC III Transmission Gear Selector .....                             | 111-1 | 111               |
| 0708 Torque Converter Module.....                                          | 112-1 | 112               |
| 0710 Transmission with Container.....                                      | 113-1 | 113               |
| 0710 Transmission Mounts.....                                              | 114-1 | 114               |
| 0710 Transmission Dipstick.....                                            | 115-1 | 115               |
| 0710 Front Support Assembly.....                                           | 116-1 | 116               |
| 0710 P1 Planetary Carrier.....                                             | 117-1 | 117               |
| 0710 P2 Planetary Carrier.....                                             | 118-1 | 118               |
| 0710 P3 Planetary Carrier.....                                             | 119-1 | 119               |
| 0710 Converter Housing Module .....                                        | 120-1 | 120               |
| 0710 Mainshaft Module .....                                                | 121-1 | 121               |
| 0710 Adapter Housing Module.....                                           | 122-1 | 122               |
| 0713 C3, C4 and C5 Clutch .....                                            | 123-1 | 123               |
| 0713 Rotating Clutch Module.....                                           | 124-1 | 124               |
| 0714 Control Valve Module .....                                            | 125-1 | 125               |
| 0721 Transmission Oil Filler Tube, Cooler, Hoses, Bracket and Clamps ..... | 126-1 | 126               |
| 0721 Transmission Oil Filters .....                                        | 127-1 | 127               |
| 0721 Scavenge Pump, Hose and Fittings .....                                | 128-1 | 128               |
| 0721 Transmission Oil Sampling Valve .....                                 | 129-1 | 129               |
| Group 08 Transfer and Final Drive Assembly                                 |       |                   |
| 0801 Transfer Case Module.....                                             | 130-1 | 130               |
| Group 09 Propeller Shafts/Universal Joints Assembly                        |       |                   |
| 0900 M1078, M1079, M1081 Driveshafts.....                                  | 131-1 | 131               |
| Group 10 Front Axles                                                       |       |                   |
| 1000 Front Axle and Wheel End Assembly.....                                | 132-1 | 132               |

|                                                                                       | Page  | Illus./<br>Figure |
|---------------------------------------------------------------------------------------|-------|-------------------|
| Group 10 Front axles (continued)                                                      |       |                   |
| 1002 Front Axle Differential Carrier.....                                             | 133-1 | 133               |
| Group 11 Rear Axles                                                                   |       |                   |
| 1100 Rear Axle and Wheel End Assembly.....                                            | 134-1 | 134               |
| 1102 Rear Axle Differential Carrier.....                                              | 135-1 | 135               |
| Group 12 Brakes                                                                       |       |                   |
| 1202 Brake Assembly .....                                                             | 136-1 | 136               |
| 1208 Air Brake Chambers and Cage Bolts.....                                           | 137-1 | 137               |
| 1208 Front Gladhands, Hoses and Fittings .....                                        | 138-1 | 138               |
| 1208 Rear Gladhands, Hoses and Fittings .....                                         | 139-1 | 139               |
| 1208 Front Brake Valve, Hoses and Fittings.....                                       | 140-1 | 140               |
| 1208 Air Tanks, Clamps, Hoses and Fittings .....                                      | 141-1 | 141               |
| 1208 CTIS Quick Relief Valves, Hoses and Fittings .....                               | 142-1 | 142               |
| 1208 Load Sensing Valve, Hoses and Fittings .....                                     | 143-1 | 143               |
| 1208 Air Brake Protection Valve, Hoses and Fittings .....                             | 144-1 | 144               |
| 1208 Anti-Compound Relay Valve, Hoses, and Fittings.....                              | 145-1 | 145               |
| 1208 Air Relay Valve, Hoses and Fittings .....                                        | 146-1 | 146               |
| 1208 Two Way Check Valve, Hoses and Fittings.....                                     | 147-1 | 147               |
| 1208 Inversion Valve, Hoses and Fittings .....                                        | 148-1 | 148               |
| 1208 Rear Brake Hoses and Fittings.....                                               | 149-1 | 149               |
| 1208 Rear Brake Hose Clamps and Brackets .....                                        | 150-1 | 150               |
| 1208 Pneumatic Hose Routing Loop Clamps and Brackets .....                            | 151-1 | 151               |
| 1208 Brake Pedal, Foot Control Valve, Hoses and Fittings.....                         | 152-1 | 152               |
| 1208 Park and Trailer Air Supply Valves, Hoses and Fittings .....                     | 153-1 | 153               |
| 1208 Low Pressure Transmitter, Two Way Check Valves, Hoses and Fittings.....          | 154-1 | 154               |
| 1208 Park Control, Emergency/Service Two Way Check Valve,<br>Hoses and Fittings ..... | 155-1 | 155               |
| 1208 Manifold Valve, Hoses and Fittings .....                                         | 156-1 | 156               |
| 1209 Air Compressor .....                                                             | 157-1 | 157               |
| Group 13 Wheels                                                                       |       |                   |
| 1311 Wheel Assembly and CTIS Valve.....                                               | 158-1 | 158               |
| 1313 Tire .....                                                                       | 159-1 | 159               |
| Group 14 Steering                                                                     |       |                   |
| 1401 Tie Rod and Tie Rod Ends.....                                                    | 160-1 | 160               |
| 1401 Steering Wheel and Column.....                                                   | 161-1 | 161               |
| 1407 Steering Gear, Pitman Arm and Drag Link .....                                    | 162-1 | 162               |
| 1410 Power Steering Pump .....                                                        | 163-1 | 163               |
| 1411 Power Steering Hoses.....                                                        | 164-1 | 164               |
| 1413 Power Steering Reservoir .....                                                   | 165-1 | 165               |
| Group 15 Frame.....                                                                   |       |                   |
| 1501 M1078, M1079, M1080 Frame Assembly .....                                         | 166-1 | 166               |
| 1501 M1081 Frame Assembly .....                                                       | 167-1 | 167               |
| 1501 Rear Light Carrier .....                                                         | 168-1 | 168               |
| 1501 Air Drop Extraction Assembly .....                                               | 169-1 | 169               |
| 1501 Air Drop Extraction Assembly Brackets .....                                      | 170-1 | 170               |
| 1501 Airdrop Parachute Suspension Assembly .....                                      | 171-1 | 171               |
| 1501 Front Bumper and Gravel Deflector .....                                          | 172-1 | 172               |
| 1501 Front Lift Beam.....                                                             | 173-1 | 173               |
| 1503 Pintle Hook .....                                                                | 174-1 | 174               |
| 1504 Spare Tire Retainer .....                                                        | 175-1 | 175               |

|                                                                                      | Page  | Illus./<br>Figure |
|--------------------------------------------------------------------------------------|-------|-------------------|
| Group 16                                                                             |       |                   |
| Springs and Shocks                                                                   |       |                   |
| 1601 Front Leaf Spring Suspension.....                                               | 176-1 | 176               |
| 1601 Front Resilient Mount and Angle Brackets.....                                   | 177-1 | 177               |
| 1601 Rear Leaf Springs.....                                                          | 178-1 | 178               |
| 1601 Rear Resilient Mount and Mechanical Stop.....                                   | 179-1 | 179               |
| 1604 Front Shocks.....                                                               | 180-1 | 180               |
| 1604 Rear Shocks.....                                                                | 181-1 | 181               |
| 1605 Rear Stabilizer Bar.....                                                        | 182-1 | 182               |
| Group 18                                                                             |       |                   |
| Body and Cab                                                                         |       |                   |
| 1801 Standard Cab Assembly, Doors, and Hinges.....                                   | 183-1 | 183               |
| 1801 Air Drop Cab Assembly, Doors, and Hinges.....                                   | 184-1 | 184               |
| 1801 Dashboard.....                                                                  | 185-1 | 185               |
| 1801 Roof Hatch and Front Grille.....                                                | 186-1 | 186               |
| 1801 Engine Splash Guards.....                                                       | 187-1 | 187               |
| 1801 Cab Door Fittings.....                                                          | 188-1 | 188               |
| 1801 Door Locks and Handles.....                                                     | 189-1 | 189               |
| 1801 Air Drop Davit Boom Assembly.....                                               | 190-1 | 190               |
| 1801 Front Cab Supports.....                                                         | 191-1 | 191               |
| 1801 Rear Cab Support, Leveling Valve, Latch, Air Spring,<br>Hoses and Fittings..... | 192-1 | 192               |
| 1801 Cab Fenders.....                                                                | 193-1 | 193               |
| 1801 Van Splash Shields.....                                                         | 194-1 | 194               |
| 1802 Standard Cab Windows.....                                                       | 195-1 | 195               |
| 1802 Air Drop Cab Windows.....                                                       | 196-1 | 196               |
| 1802 Cab Door Windows and Fittings.....                                              | 197-1 | 197               |
| 1802 Rear Fenders and Splash Guards.....                                             | 198-1 | 198               |
| 1802 Cab Steps.....                                                                  | 199-1 | 199               |
| 1804 Cab Drain Plugs.....                                                            | 200-1 | 200               |
| 1805 Cab Floor Coverings and Door Seals.....                                         | 201-1 | 201               |
| 1806 Standard Cab Liners, Boarding Handles and Sun Visors.....                       | 202-1 | 202               |
| 1806 Air Drop Panels, Visors and Boarding Handles.....                               | 203-1 | 203               |
| 1806 Center Seat and Seat Belt.....                                                  | 204-1 | 204               |
| 1806 Passenger Seat and Seat Belt.....                                               | 205-1 | 205               |
| 1806 Driver Seat and Seat Belt.....                                                  | 206-1 | 206               |
| 1808 Tool Box.....                                                                   | 207-1 | 207               |
| 1808 Cab Storage Box Assembly.....                                                   | 208-1 | 208               |
| 1810 M1078 Cargo Bed, Droptside Assembly and Ladder.....                             | 209-1 | 209               |
| 1810 M1081 Cargo Bed, Droptside Assembly and Ladder.....                             | 210-1 | 210               |
| 1810 Cargo Bed Droptside Assembly.....                                               | 211-1 | 211               |
| 1810 M1078 and M1081 Cargo Bed Sub-Assembly.....                                     | 212-1 | 212               |
| 1810 Load Spreader Rear Lift Beam.....                                               | 213-1 | 213               |
| 1810 Bow Stowage Door, Hinge and Latch.....                                          | 214-1 | 214               |
| 1812 Van Body Upper Subframe.....                                                    | 215-1 | 215               |
| 1812 Van Lifting Arm Assembly.....                                                   | 216-1 | 216               |
| 1812 Van Pod Assembly.....                                                           | 217-1 | 217               |
| 1812 Van Spreader Bar.....                                                           | 218-1 | 218               |
| 1812 Van Body Panels, Fittings and Hardware.....                                     | 219-1 | 219               |



|                 | Page                                                                        | Illus./<br>Figure |
|-----------------|-----------------------------------------------------------------------------|-------------------|
| <b>Group 18</b> | <b>Body and Cab (continued)</b>                                             |                   |
|                 | 1812 Van Steps.....                                                         | 220-1 220         |
|                 | 1812 Van Door Catch Striker and Fittings.....                               | 221-1 221         |
|                 | 1812 Van Right Hand Door.....                                               | 222-1 222         |
|                 | 1812 Van Right Hand Door, Window and Blackout Shield.....                   | 223-1 223         |
|                 | 1812 Van Left Hand Door.....                                                | 224-1 224         |
|                 | 1812 Van Door Check Left and Right.....                                     | 225-1 225         |
|                 | 1812 Van Large Window Assembly.....                                         | 226-1 226         |
|                 | 1812 Van Small Window, Screen and Cover.....                                | 227-1 227         |
|                 | 1812 Van Tapping Plates.....                                                | 228-1 228         |
|                 | 1812 Van Electrical Boxes, Switches and Fittings.....                       | 229-1 229         |
|                 | 1812 Van Electrical Conduits.....                                           | 230-1 230         |
|                 | 1812 Van Blackout Switches.....                                             | 231-1 231         |
|                 | 1812 Van Blackout and Emergency Lights.....                                 | 232-1 232         |
|                 | 1812 Van Fluorescent Lights.....                                            | 233-1 233         |
|                 | 1812 Van Clearance Lights.....                                              | 234-1 234         |
|                 | 1812 Van Relay Box Assembly.....                                            | 235-1 235         |
|                 | 1812 Van Breaker Box Assembly.....                                          | 236-1 236         |
|                 | 1812 Van Exhaust Fan Assembly.....                                          | 237-1 237         |
|                 | 1812 Van 110/208V Power Panel.....                                          | 238-1 238         |
|                 | 1812 Van 12/24V Power Panel.....                                            | 239-1 239         |
|                 | 1812 Van Data and Identification Plates.....                                | 240-1 240         |
| <b>Group 20</b> | <b>Hoist, Winch, Power Control Unit and Power Take-Off</b>                  |                   |
|                 | 2001 11K Self Recovery Winch Assembly.....                                  | 241-1 241         |
|                 | 2001 11K Self Recovery Winch Cable, Guides, Rollers and Brackets.....       | 242-1 242         |
|                 | 2004 Power Take-Off Assembly.....                                           | 243-1 243         |
| <b>Group 22</b> | <b>Body Chassis and Accessories</b>                                         |                   |
|                 | 2202 Rear Reflectors.....                                                   | 244-1 244         |
|                 | 2202 Windshield Washer Reservoir.....                                       | 245-1 245         |
|                 | 2202 Windshield Wiper and Motor.....                                        | 246-1 246         |
|                 | 2202 Cab Mirrors.....                                                       | 247-1 247         |
|                 | 2202 Front Reflectors.....                                                  | 248-1 248         |
|                 | 2207 Personnel Heater Assembly.....                                         | 249-1 249         |
|                 | 2210 Data and Identification Plates.....                                    | 250-1 250         |
| <b>Group 24</b> | <b>Body Hydraulic Lift Components</b>                                       |                   |
|                 | 2401 Air/Hydraulic Power Unit, Hoses and Fittings.....                      | 251-1 251         |
|                 | 2401 Back-up Hydraulic Pump, Hoses and Fittings.....                        | 252-1 252         |
|                 | 2402 Hydraulic Manifold Hoses and Fittings.....                             | 253-1 253         |
|                 | 2402 Hydraulic Manifold Assembly.....                                       | 254-1 254         |
|                 | 2402 Hydraulic Manifold Assembly.....                                       | 255-1 255         |
|                 | 2404 Spare Tire Retainer Lift Cylinder, Hoses and Fittings.....             | 256-1 256         |
|                 | 2404 Cab Hydraulic Cylinder, Hoses and Fittings.....                        | 257-1 257         |
|                 | 2406 Hydraulic Rotary Pump, Winch Control Valve,<br>Hoses and Fittings..... | 258-1 258         |
|                 | 2407 Suspension Cylinder, Hoses and Fittings.....                           | 259-1 259         |
|                 | 2408 Hydraulic Reservoir and Filter.....                                    | 260-1 260         |
| <b>Group 33</b> | <b>Special Purpose Kits</b>                                                 |                   |
|                 | 3301 Engine Container.....                                                  | 261-1 261         |

|                                   | Page                                                              | Illus./<br>Figure |
|-----------------------------------|-------------------------------------------------------------------|-------------------|
| Group 33                          | Special Purpose Kits (continued)                                  |                   |
|                                   | 3301 Transmission Container .....                                 | 262-1 262         |
|                                   | 3303 Van Heater Kit .....                                         | 263-1 263         |
|                                   | 3303 EMI Shielded Pump Assembly .....                             | 264-1 264         |
|                                   | 3303 Van Air Conditioner Kit .....                                | 265-1 265         |
|                                   | 3303 Options Panel Kit .....                                      | 266-1 266         |
|                                   | 3307 M1078 and M1081 Troopseat Kit .....                          | 267-1 267         |
|                                   | 3307 M1078 AND M1081 Soft Top Cover Kit (Steel) .....             | 268-1 268         |
|                                   | 3307 Amber Warning Light .....                                    | 269-1 269         |
|                                   | 3303 Flywheel Housing Vent Kit.....                               | 270-1 270         |
|                                   | 3303 200A Polarity Protection Device, Terminal, Block, .....      | 271-1 271         |
|                                   | Cables and Brackets                                               |                   |
|                                   | 3307 200A Alternator and Regulator .....                          | 272-1 272         |
|                                   | 3307 Light Material Handling Crane Kit.....                       | 273-1 273         |
|                                   | 3307 Light Material Handling Crane Winch Assembly .....           | 274-1 274         |
|                                   | 3307 Light Material Handling Crane Hoist Assembly .....           | 275-1 275         |
|                                   | 3307 Light Material Handling Crane Mast and Swing Assembly .....  | 276-1 276         |
|                                   | 3307 Light Material Handling Crane Handle Assembly .....          | 277-1 277         |
|                                   | 3307 Light Material Handling Crane Boom Assembly .....            | 278-1 278         |
|                                   | 3307 Light Material Handling Crane Cable Extension .....          | 279-1 279         |
|                                   | 3307 Light Material Handling Crane Plug and Circuit Breaker ..... | 280-1 280         |
|                                   | 3307 Shelter Tiedown Kit .....                                    | 281-1 281         |
|                                   | 3307 S280 Shelter Ladder Adapter Kit .....                        | 282-1 282         |
|                                   | 3307 Crane Adapter Kit.....                                       | 283-1 283         |
| Group 34                          | Armaments, Sighting and Fire Control Material                     |                   |
|                                   | 3402 Machine Gun Mounting Kit .....                               | 284-1 284         |
|                                   | 3402 Small Arms Mount .....                                       | 285-1 285         |
|                                   | 3402 Air Dryer, Hoses and Fittings .....                          | 286-1 286         |
|                                   | 3402 Wet Air Tank, Clamps, Hoses and Fittings .....               | 287-1 287         |
| Group 47                          | Measuring Gages                                                   |                   |
|                                   | 4705 Air Filter Warning Indicator .....                           | 288-1 288         |
| Group 94                          | Repair Kits                                                       |                   |
|                                   | Repair Kits .....                                                 | Kits-1            |
| Group 95                          | Hardware Supplies and Bulk Material, Common                       |                   |
|                                   | Bulk Items.....                                                   | Bulk-1            |
| Section III. SPECIAL TOOLS LIST   |                                                                   |                   |
| Group 26                          | Tools and Test Equipment                                          |                   |
|                                   | 2604 Unit Maintenance Special Tools.....                          | 289-1 289         |
|                                   | 2604 Direct Support Maintenance Special Tools .....               | 290-1 290         |
|                                   | 2604 General Support Maintenance Special Tools .....              | 291-1 291         |
| Section IV. CROSS REFERENCE INDEX |                                                                   |                   |
|                                   | Part Number Index .....                                           | I-1               |
|                                   | National Stock Number Index.....                                  | I-122             |
|                                   | Figure and Item Number Index .....                                | I-172             |

# UNIT, DIRECT SUPPORT, AND GENERAL SUPPORT MAINTENANCE REPAIR PARTS AND SPECIAL TOOLS LIST

## SECTION I. INTRODUCTION

### 1.Scope.

This RPSTL lists and authorizes spares and repair parts; special tools; special test, measurement, diagnostic equipment (TMDE); and other special support equipment required for performance of unit, direct support, and general support maintenance of the M1078 Series LMTV. It authorizes the requisitioning, issue, and disposition of spares, repair parts and special tools as indicated by the source, maintenance and recoverability (SMR) codes.

### 2.General.

In addition to Section I, Introduction, this Repair Parts and Special Tools List is divided into the following sections:

a.Section II. Repair Parts List. A list of spares and repair parts authorized by this RPSTL for use in the performance of maintenance. The lists also includes parts which must be removed for replacement of authorized parts. Parts lists are composed of functional groups in ascending alphanumeric sequence, with the parts in each group listed in ascending figure and item number sequence. Bulk materials are listed by item name in FIG. BULK at the end of the section. Repair parts kits are listed separately in their own functional group within Section II. Repair parts for repairable special tools are also listed in this section.

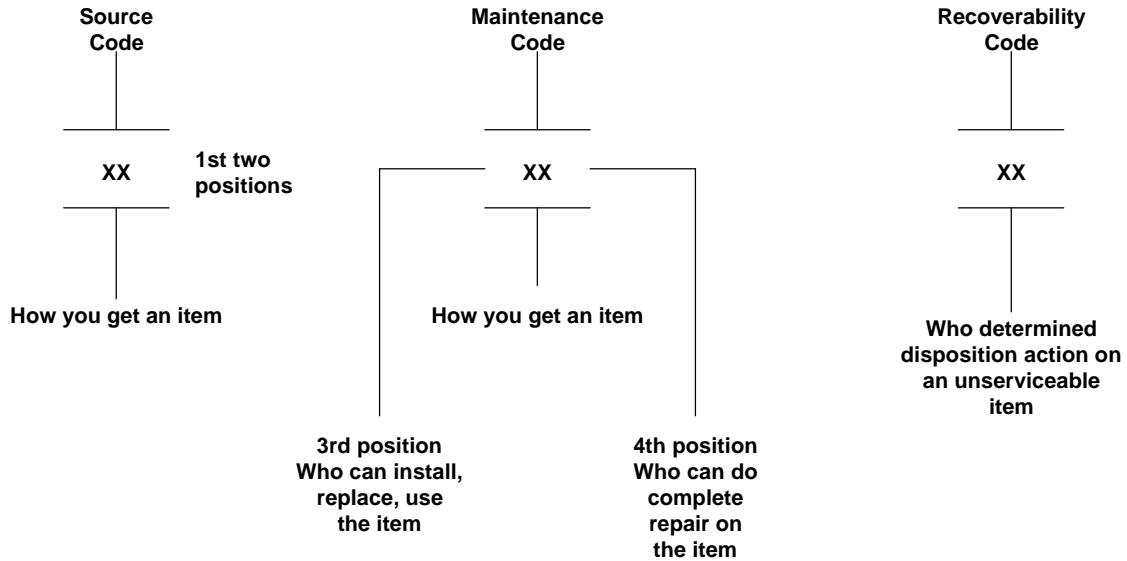
b.Section III. Special Tools List. A list of special tools, special TDME, and other special support equipment authorized by this RPSTL (as indicated by Basis of Issue (BOI) information in DESCRIPTION AND USABLE ON CODE column) for the performance of maintenance.

c.Section IV. Cross-Reference Index. A list, in National Item Identification Number (NIIN) sequence, of all National stock numbered items appearing in the listings, followed by a list in alphanumeric sequence of all part numbers appearing in the listings. National stock numbers and part numbers are cross-referenced to each illustration figure and item number appearance. The figure and item number index lists figure and item numbers in alphanumeric sequence and cross-references NSN, CAGEC and part numbers.

3. Explanation of Columns (Sections II and III).

a. ITEM NO. (Column (1)). Indicates the number used to identify items called out in the illustration.

b. SMR CODE (Column (2)). The Source, Maintenance, and Recoverability (SMR) code is a 5-position code containing supply/requisitioning information, maintenance category authorization criteria, and disposition instruction, as shown in the following breakout:



\*Complete Repair: Maintenance capacity, capability, and authority to perform all corrective maintenance tasks of the "Repair" function in a use/user environment in order to restore serviceability to a failed item.

(1) Source Code. The source code tells you how to get an item needed for maintenance, repair, or overhaul of an end item/equipment. Explanation of source codes follows:

| Code                                   | Explanation                                                                                                                                                                                                    |
|----------------------------------------|----------------------------------------------------------------------------------------------------------------------------------------------------------------------------------------------------------------|
| PA<br>PB<br>PC<br>PD<br>PE<br>PF<br>PG | Stocked items; use the applicable NSN to request/requisition items with these source codes. They are authorized to the category indicated by the code entered in the 3 <sup>rd</sup> position of the SMR code. |

\*\*NOTE: Items coded PC are subject to deterioration.

| Code                                                                                                                                                       | Explanation                                                                                                                                                                                                                                          |
|------------------------------------------------------------------------------------------------------------------------------------------------------------|------------------------------------------------------------------------------------------------------------------------------------------------------------------------------------------------------------------------------------------------------|
| <div style="border: 1px solid black; padding: 2px;">                     KD<br/>                     KF<br/>                     KB                 </div> | Items with these codes are not to be requested/requisitioned individually. They are part of a kit which is authorized to the maintenance category indicated in the 3rd position of the SMR code. The complete kit must be requisitioned and applied. |

|                                                                                                                                                                                                                                                                                                                                                                                                                                                                                                                                                          |                                                                                                                                                                                                                                                                                                                                                                                                                                                                                |
|----------------------------------------------------------------------------------------------------------------------------------------------------------------------------------------------------------------------------------------------------------------------------------------------------------------------------------------------------------------------------------------------------------------------------------------------------------------------------------------------------------------------------------------------------------|--------------------------------------------------------------------------------------------------------------------------------------------------------------------------------------------------------------------------------------------------------------------------------------------------------------------------------------------------------------------------------------------------------------------------------------------------------------------------------|
| <div style="border: 1px solid black; padding: 2px;">                     MO – (Made at<br/>                         Org level)<br/>                     MF – (Made at<br/>                         DS level)<br/>                     MH – (Made at<br/>                         GS level)<br/>                     ML – (Made at<br/>                         Specialized<br/>                         Repair Act<br/>                         (SRA))<br/>                     MD – (Made at<br/>                         Depot)                 </div> | Items with these codes are not to be requested/requisitioned individually. They must be made from bulk material which is identified by the part number in the DESCRIPTION AND USABLE ON CODE (UOC) column and listed in the Bulk Material group of the repair parts list in this RPSTL. If the item is authorized to you by the 3rd position of the SMR code, but the source code indicates it is made at a higher level, order the item from the higher level of maintenance. |
|----------------------------------------------------------------------------------------------------------------------------------------------------------------------------------------------------------------------------------------------------------------------------------------------------------------------------------------------------------------------------------------------------------------------------------------------------------------------------------------------------------------------------------------------------------|--------------------------------------------------------------------------------------------------------------------------------------------------------------------------------------------------------------------------------------------------------------------------------------------------------------------------------------------------------------------------------------------------------------------------------------------------------------------------------|

|                                                                                                                                                                                                                                                                                                                                                                                                                                                                                                |                                                                                                                                                                                                                                                                                                                                                                                                                                           |
|------------------------------------------------------------------------------------------------------------------------------------------------------------------------------------------------------------------------------------------------------------------------------------------------------------------------------------------------------------------------------------------------------------------------------------------------------------------------------------------------|-------------------------------------------------------------------------------------------------------------------------------------------------------------------------------------------------------------------------------------------------------------------------------------------------------------------------------------------------------------------------------------------------------------------------------------------|
| <div style="border: 1px solid black; padding: 2px;">                     AO – (Assembled<br/>                         By org level)<br/>                     AF – (Assembled<br/>                         By DS level)<br/>                     AH – (Assembled<br/>                         By GS level)<br/>                     AL – (Assembled<br/>                         By SRA)<br/>                     AD – (Assembled<br/>                         By Depot)                 </div> | Items with these codes are not to be requested/requisitioned individually. The parts that make up the assembled item must be requisitioned or fabricated and assembled at the level of maintenance indicated by the source code. If the 3rd position code of the SMR code authorizes you to replace the item, but the source code indicates the item is assembled at a higher level, order the item from the higher level of maintenance. |
|------------------------------------------------------------------------------------------------------------------------------------------------------------------------------------------------------------------------------------------------------------------------------------------------------------------------------------------------------------------------------------------------------------------------------------------------------------------------------------------------|-------------------------------------------------------------------------------------------------------------------------------------------------------------------------------------------------------------------------------------------------------------------------------------------------------------------------------------------------------------------------------------------------------------------------------------------|

XA Do not requisition an "XA"-coded item. Order its next higher assembly. (Also, refer to the NOTE below.)

XB If an "XB" item is not available from salvage, order it using the CAGEC and part number given.

XC Installation drawing, diagram, instruction sheet, field service drawing, that is identified by manufacturer's part number.

XD Item is not stocked. Order an "XD" coded item through normal supply channels using the CAGEC and part number given, if no NSN is available.

NOTE: Cannibalization or controlled exchange, when authorized, may be used as a source of supply for items with the above source codes, except for those source coded "XA".

(2) Maintenance Code. Maintenance codes tells you the level(s) of maintenance authorized to USE and REPAIR support items. The maintenance codes are entered in the third and fourth positions of the SMR code as follows:

(a) The maintenance code entered in the third position tells the lowest maintenance level authorized to remove, replace, and use an item. The maintenance code entered in the third position will indicate authorization to one of the following levels of maintenance.

| Code | Application/Explanation                                           |
|------|-------------------------------------------------------------------|
| C    | Crew or operator maintenance done within organizational level.    |
| O    | Organizational level can remove, replace, and use the item.       |
| F    | Direct support level can remove, replace, and use the item.       |
| H    | General support level can remove, replace, and use the item.      |
| L    | Specialized repair activity can remove, replace and use the item. |
| D    | Depot level can remove, replace, and use the item.                |

(b) The maintenance code entered in the fourth position tells whether or not the item is to be repaired and identifies the lowest maintenance level with the capability to do complete repair (i.e., perform all authorized repair functions.) (NOTE: Some limited repair may be done on the item at a lower level of maintenance, if authorized by the Maintenance Allocation Chart (MAC) and SMR codes.) This position will contain one of the following maintenance codes.

| Code | Application/Explanation                                                                                                                                                                                 |
|------|---------------------------------------------------------------------------------------------------------------------------------------------------------------------------------------------------------|
| O    | Organizational is the lowest level that can do complete repair of the item.                                                                                                                             |
| F    | Direct support is the lowest level that can do complete repair of the item.                                                                                                                             |
| H    | General support is the lowest level that can do complete repair of the item.                                                                                                                            |
| D    | Depot is the lowest level that can do complete repair of the item.                                                                                                                                      |
| Z    | Nonrepairable. No repair is authorized.                                                                                                                                                                 |
| B    | No repair is authorized. (No parts or special tools are authorized for the maintenance of a "B" coded item). However, the item may be reconditioned by adjusting, lubricating, etc., at the user level. |

(3) Recoverability Code. Recoverability codes are assigned to items to indicate the disposition action on unserviceable items. The recoverability code is entered in the fifth position of the SMR Code as follows:

| Code | Application/Explanation                                                                                                                                                                                                                               |
|------|-------------------------------------------------------------------------------------------------------------------------------------------------------------------------------------------------------------------------------------------------------|
| Z    | Nonrepairable item. When unserviceable, condemn and dispose of the item at the level of maintenance shown in 3rd position of SMR Code.                                                                                                                |
| O    | Reparable item. When uneconomically repairable, condemn and dispose of the item at organizational level.                                                                                                                                              |
| F    | Reparable item. When uneconomically repairable, condemn and dispose of the item at the direct support level.                                                                                                                                          |
| H    | Reparable item. When uneconomically repairable, condemn and dispose of the item at the general support level.                                                                                                                                         |
| D    | Reparable item. When beyond lower level repair capability, return to depot. Condemnation and disposal of item not authorized below depot level.                                                                                                       |
| L    | Reparable item. Condemnation and disposal not authorized below specialized repair activity (SRA).                                                                                                                                                     |
| A    | Item requires special handling or condemnation procedures because of specific reasons (e.g., precious metal content, high dollar value, critical material, or hazardous material). Refer to appropriate manuals/directives for specific instructions. |

c. CAGEC (Column (3)). The Commercial and Government Entity Code (CAGEC) is a 5-digit alphanumeric code which is used to identify the manufacturer, distributor, or Government agency, etc., that supplies the item.

d. PART NUMBER (Column (4)). Indicates the primary number used by the manufacturer (individual, company, firm, corporation, or Government activity), which controls the design and characteristics of the item by means of its engineering drawings, specifications standards, and inspection requirements to identify an item or range of items.

NOTE: When you use an NSN to requisition an item, the item received may have a different part number from the part ordered.

e. DESCRIPTION AND USABLE ON CODE (UOC) (Column (5)). This column includes the following information:

- (1) The Federal item name and, when required, a minimum description to identify the item.
- (2) The physical security classification of the item is indicated by the parenthetical entry (none).
- (3) Items that are included in kits and sets are listed below the name of the kit or set.

(4) Spare/repair parts that make up an assembled item are listed immediately following the assembled item line entry.

(5) Part numbers for bulk materials are referenced in this column in the line item entry for the item to be manufactured/fabricated.

(6) When the item is not used with all serial numbers of the same model, the effective serial numbers are shown on the last line(s) of the description (before UOC).

(7) The usable on code, when applicable (see paragraph 5, Special information).

(8) In the Special Tools List section, the basis of issue (BOI) appears as the last line(s) in the entry for each special tool, special TMDE, and other special support equipment. When density of equipments supported exceeds spread indicated in the basis of issue, the total authorization is increased proportionately.

(9) The statement "END OF FIGURE" appears just below the last item description in Column 5 for a given figure in both Section II and Section III.

f. QTY (Column (6)). The QTY (quantity per figure column) indicates the quantity of the item used in the breakout shown on the illustration figure, which is prepared for a functional group, subfunctional group, or an assembly. A "V" appearing in this column in lieu of a quantity indicates that the quantity is variable and the quantity may vary from application to application.

#### 4. Explanation of Columns (Section IV).

##### a. NATIONAL STOCK NUMBER (NSN) INDEX.

(1) STOCK NUMBER column. This column lists the NSN by National item identification number (NIIN) sequence. The NIIN consists of the last nine digits of the NSN (i.e., 5305-01-674-1467). When using this column to locate an item, ignore the first 4 digits of the NSN. However, the complete NSN should be used when ordering items by stock number.

(2) FIG. column. This column lists the number of the figure where the item is identified/located. The figures are in numerical order in Section II and Section III.

(3) ITEM column. The item number identifies the item associated with the figure listed in the adjacent FIG. column. This item is also identified by the NSN listed on the same line.

b. PART NUMBER INDEX. Part numbers in this index are listed in ascending alphanumeric sequence (i.e., vertical arrangement of letter and number combination which places the first letter or digit of each group in order A through Z, followed by the numbers 0 through 9 and each following letter or digit in like order).

(1) CAGEC column. The Commercial and Government Entity Code (CAGEC) is a 5-digit alphanumeric code used to identify the manufacturer, distributor, or Government agency, etc., that supplies the item.

(2) PART NUMBER column. Indicates the primary number used by the manufacturer (individual, firm, corporation or Government activity), which controls the design and characteristics of the item by means of its engineering drawings, specifications standards, and inspection requirements to identify an item or range of items.



(3) STOCK NUMBER column. This column lists the NSN for the associated part number and manufacturer identified in the PART NUMBER and CAGEC columns to the left.

(4) FIG. column. This column lists the number of the figure where the item is identified/located in Section II and III.

(5) ITEM column. The item number is that number assigned to the item as it appears in the figure referenced in the adjacent figure number column.

c. FIGURE AND ITEM NUMBER INDEX.

(1) FIG. column. This column lists the number of the figure where the item is identified/located in Section II and III.

(2) ITEM column. The item number is that number assigned to the item as it appears in the figure referenced in the adjacent figure number column.

(3) STOCK NUMBER column. This column lists the NSN for the item.

(4) CAGEC column. The Commercial and Government Entity Code (CAGEC) is a 5-digit alphanumeric code used to identify the manufacturer, distributor, or Government agency, etc., that supplies the item.

(5) PART NUMBER column. Indicates the primary number used by the manufacturer (individual, firm, corporation or Government activity), which controls the design and characteristics of the item by means of its engineering drawings, specifications standards, and inspection requirements to identify an item or range of items.

5. Special Information.

a. USABLE ON CODE. The usable on code appears in the lower left corner of the Description column heading. Usable on codes are shown as "UOC: . . . . ." in the description column (left justified) on the first line applicable item description/ nomenclature. Uncoded items are applicable to all models. Identification of UOC's used in this RPSTL are:

Code Used On

Trk, Car., LMTV M1078  
LWB\*W/WN  
LAB W/O WN

Trk, Van, LMTV M1079  
LWD\*W/WN  
LAD W/O WN

LAATrk, Chas, LMTV M1080

Trk, Car., LMTV/AIRDROP M1081  
LWC\*W/WN  
LACW/O WN

\* = With PTO.

b. FABRICATION INSTRUCTIONS. Bulk materials required to manufacture items are listed in the Bulk Material Functional Group of this RPSTL. Part numbers for bulk materials are also referenced in the description column of the line item entry for the item to be manufactured/fabricated. Detailed fabrication instructions for items source coded to be manufactured or fabricated are found in TM 9-2320-365-20 and TM 9-2320-365-34.

c. ASSEMBLY INSTRUCTION. Detailed assembly instructions for items source coded to be assembled from component spare/repair parts are found in TM 9-2320-365-20 and TM 9-2320-365-34. Items that make up the assembly are listed immediately following the assembly item entry or reference is made to an applicable figure.

d. KITS. Line item entry for repair parts kits appear in a group in Section II (see table of contents).

e. INDEX NUMBERS. Items which have the word BULK in the figure column will have an index number shown in the item number column. This index number is a cross-reference between the National Stock Number/Part Number Index and the bulk material list in Section II.

f. ASSOCIATED PUBLICATIONS. The publication(s) listed below pertain to the MTV and its components.

| <u>Publication</u> | <u>Short Title</u>                                                                             |
|--------------------|------------------------------------------------------------------------------------------------|
| TB 9-2300-365-15   | Technical Bulletin, Warranty, LMTV                                                             |
| TM 9-2320-365-10   | Operator's Instructions                                                                        |
| TM 9-2320-365-10HR | Hand Receipt                                                                                   |
| TM 9-2320-365-20   | Unit Maintenance Manual                                                                        |
| TM 9-2320-365-34   | Direct Support (DS)/General Support (GS) Maintenance Manual                                    |
| TM 9-2320-365-24P  | Unit, Direct Support (DS) and General Support (GS) Repair Parts and Special Tools List (RPSTL) |

6. How to Locate Repair Parts.

a. When National Stock Number or Part Number Is Not Known.

(1) First. Using the Table of Contents, determine the assembly group or subassembly group to which the item belongs. This is necessary since figures are prepared for assembly groups and subassembly groups, and listings are divided into the same groups.

(2) Second. Find the figure covering the assembly group or subassembly group to which the item belongs.

(3) Third. Identify the item on the figure and use the Figure and Item Number Index to find the NSN.

b. When National Stock Number or Part Number Is Known.

(1) First. Using the National Stock Number or Part Number Index, find the pertinent NSN or PN. The NSN index is in National Item Identification Number (NIIN) sequence (see 4a(1)). The part numbers in the PN index are listed in ascending alphanumeric sequence (see 4b). Both indexes cross-reference to the illustration/figure and item number of the item.

(2) Second. Turn to the figure and item number, verify the item is the one you're looking for, then locate the item number in the repair parts list for the figure.

7. Abbreviations.Abbreviation

LMTV

W/WN

STE/ICE

CTIS

Explanation

Light Medium Tactical Vehicle

With Winch

Simplified Test Equipment/Internal Combustion Engines

Central Tire Inflation System



## Section II. REPAIR PARTS LIST

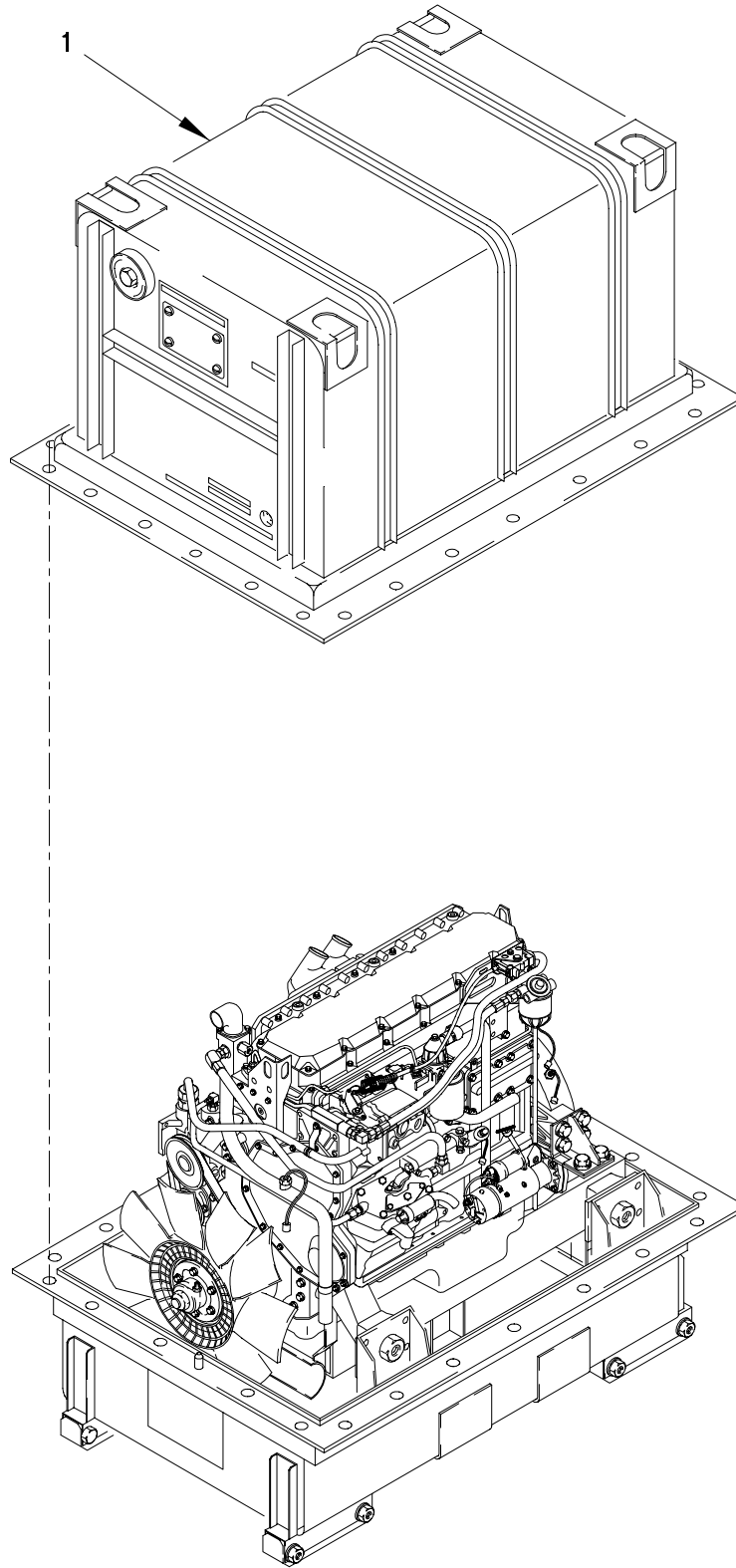


FIGURE 1. DRESSED ENGINE WITH CONTAINER

SECTION II

TM 9-2320-365-24P

| (1)<br>ITEM<br>NO | (2)<br>SMR<br>CODE | (3)<br>FSCM | (4)<br>PART<br>NUMBER | (5)<br>DESCRIPTION AND<br>USABLE ON CODE (UOC) | (6)<br>QTY |
|-------------------|--------------------|-------------|-----------------------|------------------------------------------------|------------|
|-------------------|--------------------|-------------|-----------------------|------------------------------------------------|------------|

GROUP 0100: ENGINE ASSEMBLY  
FIG.1 DRESSED ENGINE WITH CONTAINER

|   |       |       |              |                            |   |
|---|-------|-------|--------------|----------------------------|---|
| 1 | PAFHH | 0FW39 | 12414398-003 | ENGINE AND CONTAINER ..... | 1 |
|---|-------|-------|--------------|----------------------------|---|

END OF FIGURE

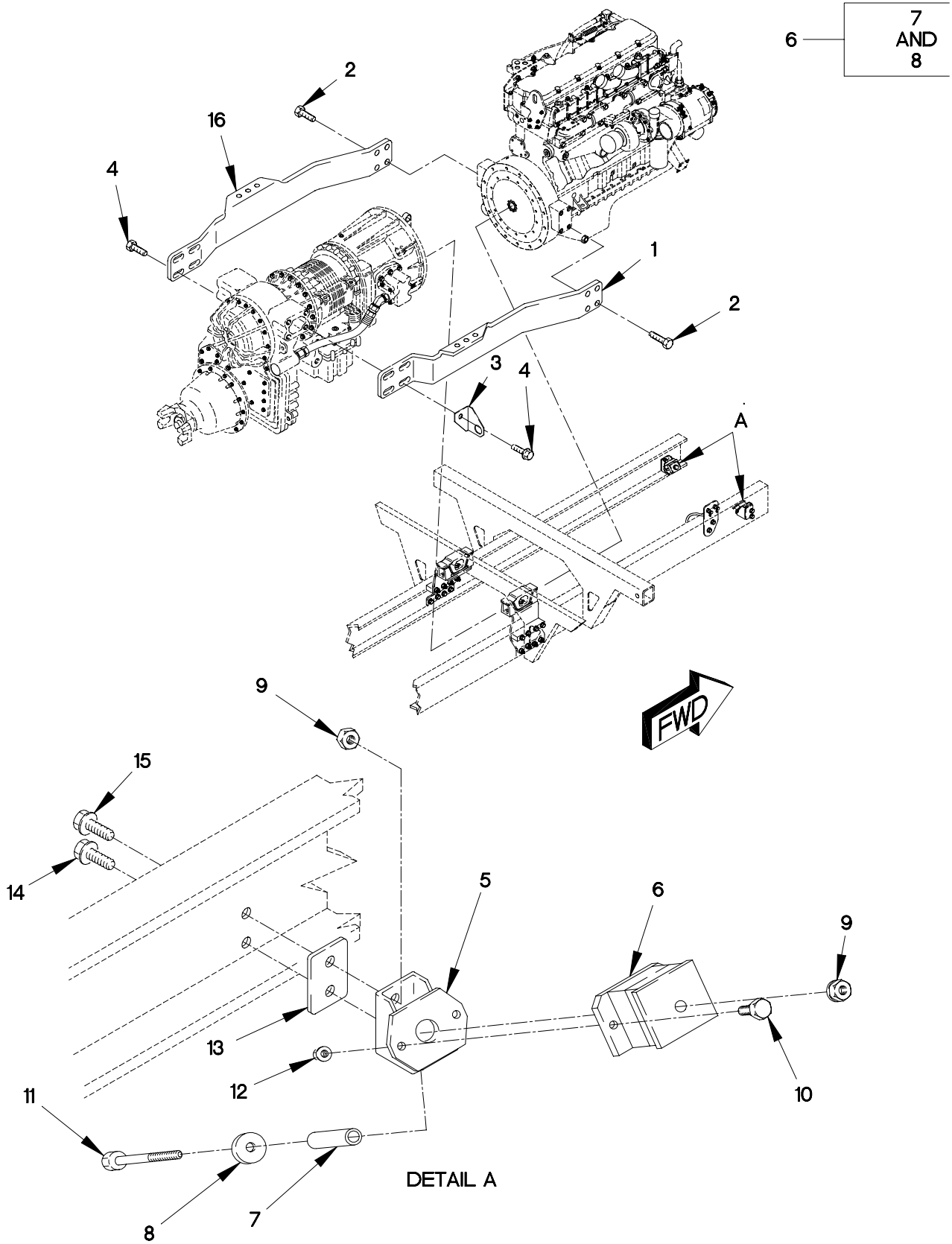


FIGURE 2. ENGINE MOUNTS



| (1)<br>ITEM<br>NO                                  | (2)<br>SMR<br>CODE | (3)<br>FSCM | (4)<br>PART<br>NUMBER | (5)<br>DESCRIPTION AND<br>USABLE ON CODE (UOC) | (6)<br>QTY |
|----------------------------------------------------|--------------------|-------------|-----------------------|------------------------------------------------|------------|
| GROUP 0100: ENGINE ASSEMBLY<br>FIG.2 ENGINE MOUNTS |                    |             |                       |                                                |            |
| 1                                                  | PAFZZ              | 19207       | 12414289-001          | BRACKET,ENGINE MOUN.....                       | 1          |
| 2                                                  | PAFZZ              | 19207       | 12414566-001          | SCREW,CAP,HEXAGON H M14 X 2 X 35...            | 8          |
| 3                                                  | PAFZZ              | 0FW39       | 12420840-001          | BRACKET,ANGLE.....                             | 1          |
| 4                                                  | PAFZZ              | 19207       | 12414307-194          | SCREW,CAP,HEXAGON H M20 X 2.5 X 60.            | 8          |
| 5                                                  | PAFZZ              | 19207       | 12414285              | BRACKET,ENGINE MOUN.....                       | 2          |
| 6                                                  | PAFZZ              | 81860       | 26112                 | MOUNT,RESILIENT.....                           | 2          |
| 7                                                  | PAFZZ              | 19207       | 12419221              | .SPACER,SLEEVE.....                            | 2          |
| 8                                                  | PAFZZ              | 19207       | 12419222              | .WASHER,FLAT 1/2.....                          | 2          |
| 9                                                  | PAFZZ              | 19207       | 12414308-021          | NUT,SELF-LOCKING,EX M12 X 1.5.....             | 6          |
| 10                                                 | PAFZZ              | 19207       | 12414307-037          | BOLT,MACHINE M8 X 1.25 X 25.....               | 4          |
| 11                                                 | PAFZZ              | 19207       | 12414307-087          | BOLT,MACHINE M12 X 1.5 X 90.....               | 2          |
| 12                                                 | PAFZZ              | 19207       | 12414308-018          | NUT,SELF-LOCKING,EX M8 X 1.25.....             | 4          |
| 13                                                 | PAFZZ              | 19207       | 12414665              | SPACER,PLATE.....                              | 2          |
| 14                                                 | PAFZZ              | 19207       | 12414307-078          | BOLT,MACHINE M12 X 1.5 X 35.....               | 3          |
| 15                                                 | PAFZZ              | 19207       | 12414307-079          | BOLT,MACHINE M12 X 1.5 X 40.....               | 1          |
| 16                                                 | PAFZZ              | 19207       | 12414290-001          | BRACKET,ENGINE MOUN.....                       | 1          |

END OF FIGURE

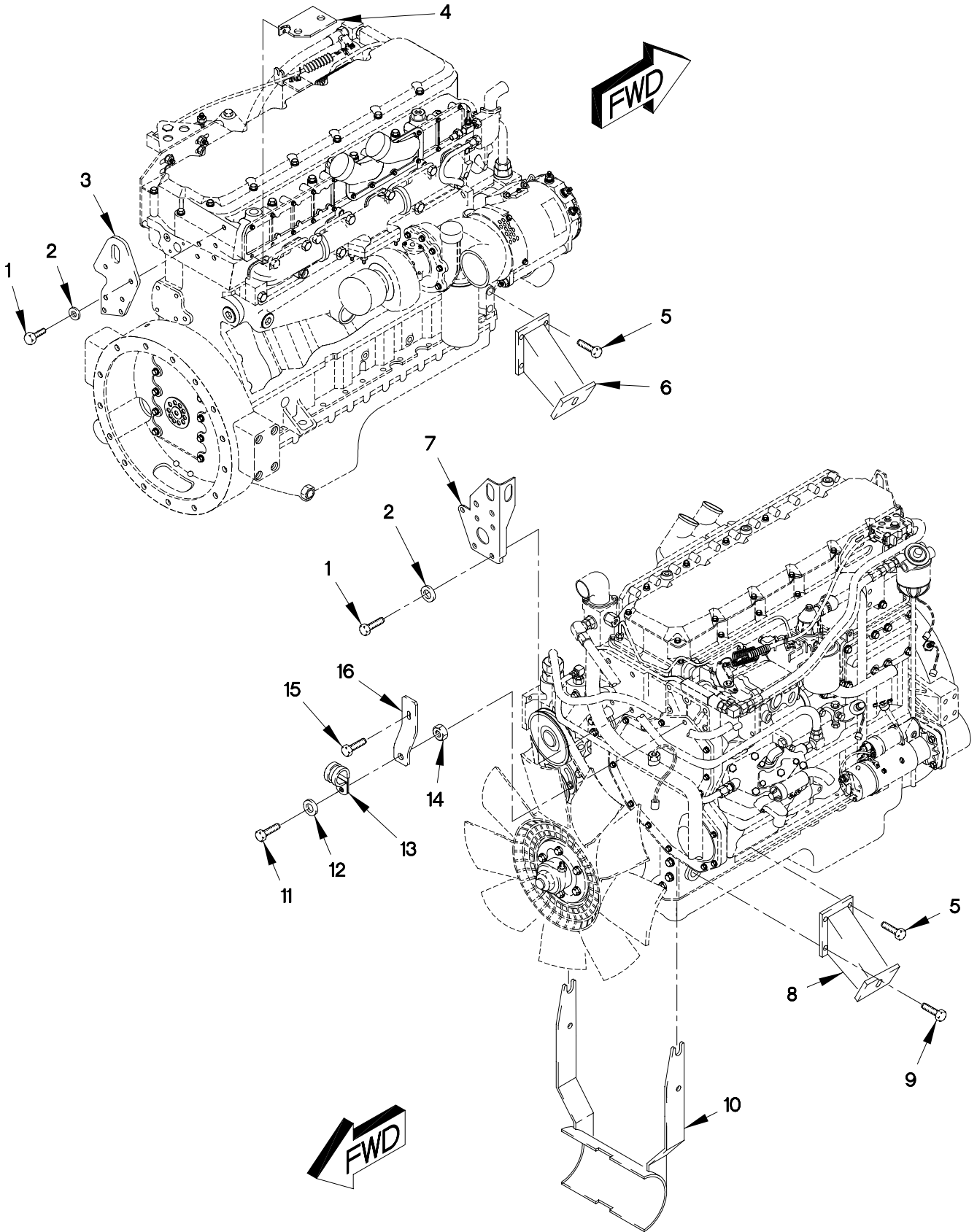


FIGURE 3. ENGINE BRACKETS

## SECTION II

TM 9-2320-365-24P

| (1)<br>ITEM<br>NO                                    | (2)<br>SMR<br>CODE | (3)<br>FSCM | (4)<br>PART<br>NUMBER     | (5)<br>DESCRIPTION AND<br>USABLE ON CODE (UOC) | (6)<br>QTY |
|------------------------------------------------------|--------------------|-------------|---------------------------|------------------------------------------------|------------|
| GROUP 0100: ENGINE ASSEMBLY<br>FIG.3 ENGINE BRACKETS |                    |             |                           |                                                |            |
| 1                                                    | PAOZZ              | 11083       | 8T4136                    | BOLT,MACHINE M10 X 1.5 X 25.....               | 9          |
| 2                                                    | PAOZZ              | 11083       | 8T4121                    | WASHER,FLAT M11.....                           | 9          |
| 3                                                    | PAOZZ              | 11083       | 4R9234                    | PLATE,MOUNTING.....                            | 1          |
| 4                                                    | PAOZZ              | 19207       | 12421149                  | BRACKET,ANGLE.....                             | 1          |
| 5                                                    | PAOZZ              | 19207       | 12414566-002              | SCREW,CAP,HEXAGON H M14 X 2 X 40...            | 6          |
| 6                                                    | PAOZZ              | 19207       | 12414287                  | BRACKET,ENGINE MOUN.....                       | 1          |
| 7                                                    | PAOZZ              | 11083       | 4R9233                    | BRACKET,ANGLE.....                             | 1          |
| 8                                                    | PAOZZ              | 19207       | 12414286                  | BRACKET,VEHICULAR C.....                       | 1          |
| 9                                                    | PAOZZ              | 19207       | 12414566-001              | SCREW,CAP,HEXAGON H M14 X 2 X 35...            | 2          |
| 10                                                   | PAOZZ              | 0FW39       | 12414432                  | BRACKET,MOUNTING.....                          | 1          |
| 11                                                   | PAOZZ              | 64678       | 000933 006058             | SCREW,CAP,HEXAGON H M6 X 1 X 25....            | 1          |
| 12                                                   | PAOZZ              | 19200       | 12524631-1                | WASHER,FLAT M6.....                            | 1          |
| 13                                                   | PAOZZ              | 96906       | MS21333-107               | CLAMP,LOOP 1 IN.....                           | 1          |
| 14                                                   | PAOZZ              | 15526       | DIN 934 ST M6             | NUT,PLAIN,HEXAGON M6 X 1.....                  | 1          |
| 15                                                   | PAOZZ              | 15526       | DIN933-M10X20-8.<br>8-A4C | BOLT,MACHINE M10 X 1.5 X 20.....               | 1          |
| 16                                                   | PAOZZ              | 19207       | 12414401                  | BRACKET,ENGINE MOUN.....                       | 1          |

END OF FIGURE

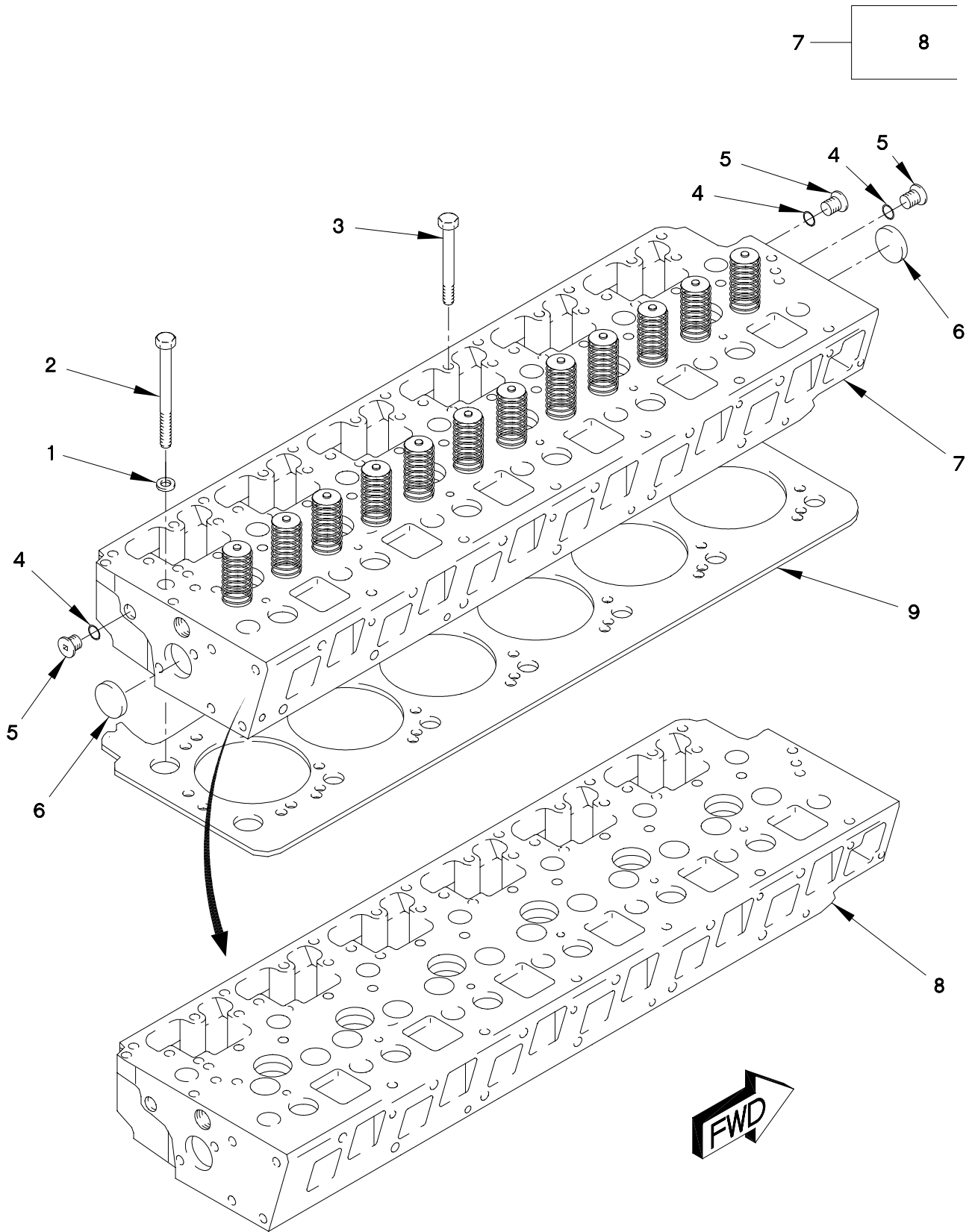


FIGURE 4. CYLINDER HEAD WITH VALVES AND GASKET

| (1)<br>ITEM<br>NO                              | (2)<br>SMR<br>CODE | (3)<br>FSCM | (4)<br>PART<br>NUMBER | (5)<br>DESCRIPTION AND<br>USABLE ON CODE (UOC)                  | (6)<br>QTY |
|------------------------------------------------|--------------------|-------------|-----------------------|-----------------------------------------------------------------|------------|
| GROUP 0101: CRANKCASE, BLOCK,<br>CYLINDER HEAD |                    |             |                       |                                                                 |            |
| FIG.4 CYLINDER HEAD WITH VALVES AND<br>GASKET  |                    |             |                       |                                                                 |            |
| 1                                              | PAFZZ              | 11083       | 8T3282                | SPACER,RING.....                                                | 14         |
| 2                                              | PAFZZ              | 11083       | 8T0657                | SCREW,CAP,HEXAGON H M20 X 2.5 X<br>160.....                     | 14         |
| 3                                              | PAFZZ              | 11083       | 8T5030                | SCREW,CAP,HEXAGON H M10 X 1.5 X<br>120.....                     | 6          |
| 4                                              | PAFZZ              | 11083       | 1J9671                | PACKING,PREFORMED PART OF KIT P/N<br>9X8318.....                | 3          |
| 5                                              | PAFZZ              | 11083       | 9S8003                | PLUG,MACHINE THREAD.....                                        | 3          |
| 6                                              | PAFZZ              | 11083       | 2M6471                | PLUG,EXPANSION.....                                             | 2          |
| 7                                              | AHHHH              | 11083       | 115-4165              | CYLINDER HEAD,DIESE.....                                        | 1          |
| 8                                              | PAHHH              | 11083       | 115-4107              | .CYLINDER HEAD,DIESE (WITH GUIDES,<br>INSERTS AND SLEEVES)..... | 1          |
| 9                                              | PAFZZ              | 11083       | 4P6930                | GASKET PART OF KIT P/N 9X8318.....                              | 1          |

END OF FIGURE

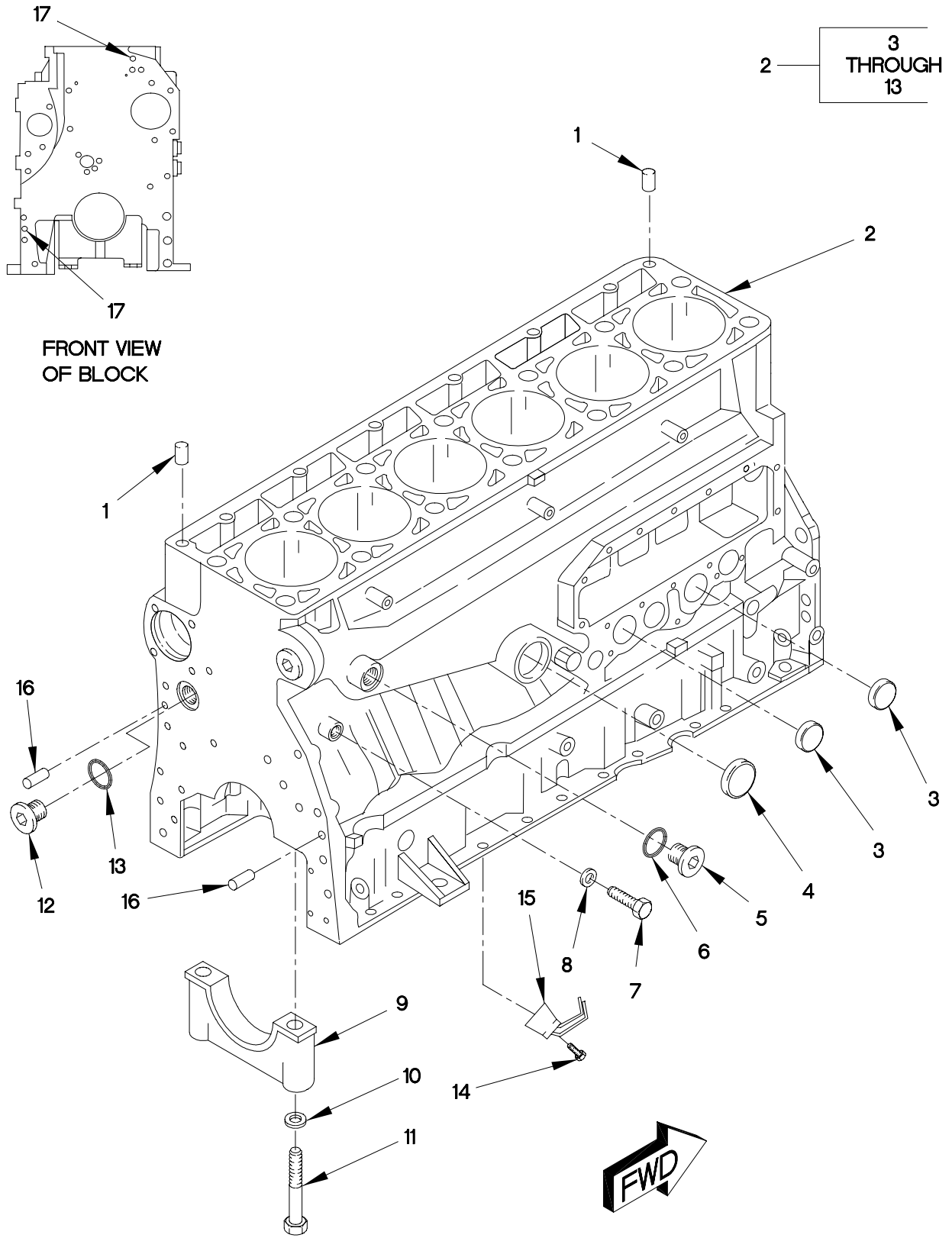


FIGURE 5. CYLINDER BLOCK