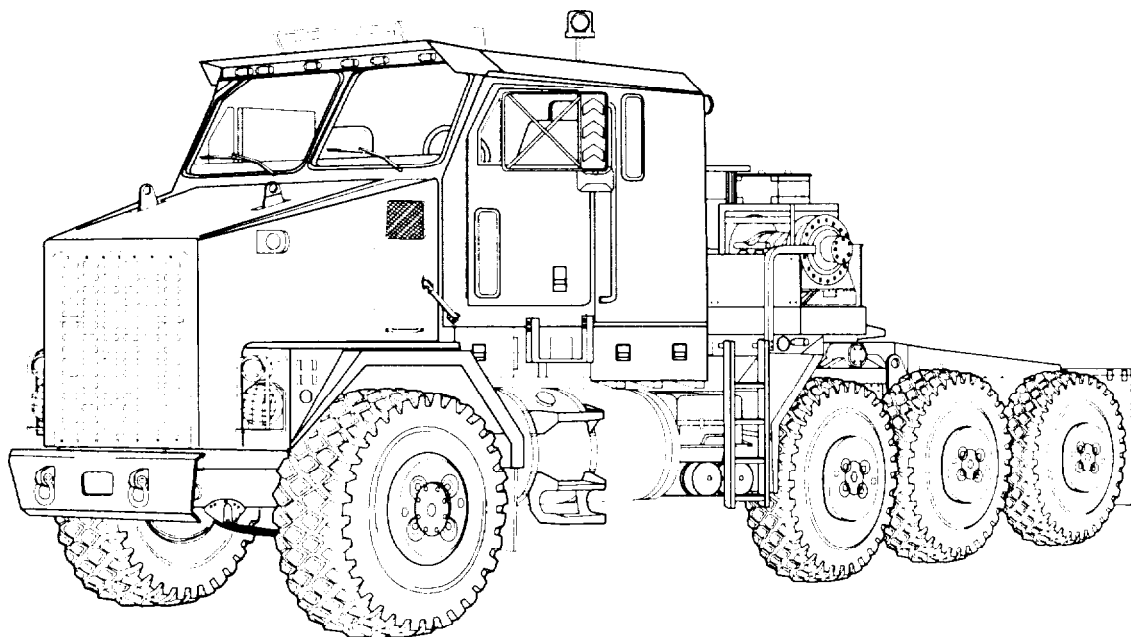


TM 9-2320-360-24P

This manual supersedes TM 9-2320-360-34P, dated 31 March 1994 and
TM 9-2320-360-20P, dated 31 March 1994, including all changes.

TECHNICAL MANUAL

**UNIT, DIRECT SUPPORT AND GENERAL SUPPORT MAINTENANCE
REPAIR PARTS AND SPECIAL TOOLS LIST**



**TRUCK, TRACTOR, M1070, 8 X 8,
HEAVY EQUIPMENT TRANSPORTER (HET)
NSN 2320-01-318-9902
EIC: B5C**

Approved for public release; distribution is unlimited.

HEADQUARTERS, DEPARTMENT OF THE ARMY

FEBRUARY 1998

TECHNICAL MANUAL
No. 9-2320-360-24P

HEADQUARTERS
DEPARTMENT OF THE ARMY
WASHINGTON, D.C. 15 February 1998

**UNIT, DIRECT SUPPORT AND GENERAL SUPPORT MAINTENANCE
REPAIR PARTS AND SPECIAL TOOLS LIST
FOR
TRUCK, TRACTOR, M1070,8 X 8,
HEAVY EQUIPMENT TRANSPORTER (HET)
NSN 2320-01-318-9902
EIC: B5C**

Current as of: 1 December 1997

REPORTING ERRORS AND RECOMMENDING IMPROVEMENTS

You can help improve this manual. If you find any mistakes or if you know of a way to improve the procedures, please let us know. Mail your letter, DA Form 2028 (Recommended Changes to Publications and Blank Forms), or DA Form 2028-2 located in back of this manual direct to: Commander, U.S. Army Tank-automotive and Armaments Command, AITN: AMSTA-IM-HHE, Warren, MI 48397-5000. A reply will be furnished to you.

TABLE OF CONTENTS

	Page	Illus Figure
Section I. INTRODUCTION	1-1	
Section II. REPAIR PARTS LIST	2-1	
Group 01 Engine		
0100 Engine Mounting	2-2	1
0100 Engine Assembly	2-4	2
0101 Cylinder Block (Sheet 1 of 3)	2-6	3
0101 Cylinder Block (Sheet 2 of 3)	2-7	3
0101 Cylinder Block (Sheet 3 of 3)	2-8	3
0101 Engine End Plates	2-12	4
0101 Air Box Covers and Drains	2-14	5
0101 Cylinder Head	2-16	6
0102 Crankshaft	2-18	7
0102 Crankshaft Cover, Trunnion and Oil Seal	2-20	8
0103 Flywheel Housing and Flexplate Assembly	2-22	9
0104 Piston and Connecting Rod Assembly	2-26	10

Approved for public release; distribution is unlimited.

*This manual supersedes TM 9-2320-360-34P, dated 31 March 1994 and TM 9-2320-360-20P, dated 31 March 1994, including all changes.

TABLE OF CONTENTS (CONT)

		Page	Illus Figure
Group 01	Engine (Cont)		
	0105 Rocker Cover and Gasket.....	2-30	11
	0105 Rocker Arms, Valves, and Cam Followers	2-32	12
	0105 Camshafts.....	2-34	13
	0105 Idler Gear.....	2-36	14
	0105 Vibration Damper and Front Cover.....	2-38	15
	0106 Oil Breather Tubes.....	2-40	16
	0106 Oil Filter Assembly and Sampling Valve	2-42	17
	0106 Oil Cooler	2-44	18
	0106 Oil Pan and Dipstick.....	2-48	19
	0106 Oil Pump Mounting.....	2-50	20
	0106 Oil Pump Assembly.....	2-52	21
	0108 Exhaust Manifold and Gasket.....	2-54	22
	0109 Water Pump Drive Gear.....	2-56	23
	0109 Blower Drive	2-58	24
	0109 Accessory Drive	2-60	25
	0112 Engine Brake Retarder.....	2-62	26
Group 03	Fuel System		
	0301 Fuel Injector	2-64	27
	0302 Fuel Supply Pump	2-66	28
	0302 Hand Priming Pump Assembly	2-68	29
	0304 Air Cleaner Assembly.....	2-70	30
	0304 Air Intake Ducting.....	2-72	31
	0305 Blower Assembly (Sheet 1 of 2)	2-74	32
	0305 Blower Assembly (Sheet 2 of 2).....	2-75	32
	0305 Turbocharger Mounting.....	2-80	33
	0305 Turbocharger Assembly.....	2-82	34
	0306 Left Side Fuel Tank Assembly	2-84	35
	0306 Right Side Fuel Tank Assembly.....	2-86	36
	0306 Fuel Lines and Fittings (Sheet 1 of 2)	2-88	37
	0306 Fuel Lines and Fittings (Sheet 2 of 2)	2-89	37
	0309 Fuel/Water Separator Assembly	2-94	38
	0309 Secondary Fuel Filter.....	2-96	39
	0311 Ether Starting Aid.....	2-98	40
Group 04	Exhaust System		
	0401 Muffler/Tailpipe Assembly (Sheet 1 of 2)	2-100	41
	0401 Muffler/Tailpipe Assembly (Sheet 2 of 2)	2-101	41

TABLE OF CONTENTS (CONT)

	Page	Illus Figure
Group 05		
Cooling System		
0501 Radiator Assembly	2-104	42
0502 Radiator Mounting	2-106	43
0503 Cooling Hoses, Lines, and Fittings	2-110	44
0503 Cooling System Hoses and Fittings	2-112	45
0503 Engine Aftercooler	2-116	46
0504 Water Pump Assembly	2-118	47
0505 Fan Assembly and Belts	2-120	48
0505 Fan Clutch Assembly	2-122	49
0508 Coolant Filter	2-126	50
Group 06		
Electrical System		
0601 12V Alternator Mounting	2-128	51
0601 12V Alternator Assembly	2-130	52
0601 24V Alternator Mounting	2-134	53
0601 24V Alternator Assembly	2-136	54
0603 Starter Mounting	2-140	55
0603 Starter Assembly	2-142	56
0606 Engine Circuit Breakers	2-146	57
0607 Instrument Panel (Sheet 1 of 3)	2-148	58
0607 Instrument Panel (Sheet 2 of 3)	2-149	58
0607 Instrument Panel (Sheet 3 of 3)	2-150	58
0607 Instrument Panel Wiring Harnesses	2-154	59
0607 Electrical Control Box Assembly (Sheet 1 of 2)	2-158	60
0607 Electrical Control Box Assembly (Sheet 2 of 2)	2-159	60
0607 Steering Column Harness and Switch	2-162	61
0608 Engine Electronic Throttle Assembly	2-164	62
0608 Engine Electronic Control Module (Sheet 1 of 2)	2-166	63
0608 Engine Electronic Control Module (Sheet 2 of 2)	2-167	63
0609 Headlight Assembly	2-170	64
0609 Front Composite Light	2-172	65
0609 Rear Composite Light	2-174	66
0609 Blackout Drive Light	2-176	67
0609 Cab Clearance Light Assembly	2-178	68
0609 Clearance Marker Lights	2-180	69
0609 Rear I.D. Light Assembly	2-182	70
0609 Backup Light and Alarm	2-184	71
0609 Map Light Assembly	2-186	72
0609 Mounted Worklamp	2-188	73

TABLE OF CONTENTS (CONT)

	Page	Illus Figure
Group 06 Electrical System (Cont)		
0609 Beacon Light Assembly (Sheet 1 of 2)	2-190	74
0609 Beacon Light Assembly (Sheet 2 of 2)	2-191	74
0610 Fuel Level Sending Unit	2-194	75
0610 Sending Units and Warning Switches	2-196	76
0610 Buzzer Warning System	2-198	77
0612 Battery Box Assembly	2-200	78
0612 Battery Cables and Terminals	2-204	79
0612 Slave Receptacle	2-206	80
0613 Engine Wiring Installation	2-208	81
0613 Engine Wiring Harness (Sheet 1 of 2)	2-212	82
0613 Engine Wiring Harness (Sheet 2 of 2)	2-213	82
0613 Cab Wiring Installation (Sheet 1 of 3)	2-216	83
0613 Cab Wiring Installation (Sheet 2 of 3)	2-217	83
0613 Cab Wiring Installation (Sheet 3 of 3)	2-218	83
0613 Electrical Control Box Wiring Harnesses (Sheet 1 of 5)	2-220	84
0613 Electrical Control Box Wiring Harnesses (Sheet 2 of 5)	2-221	84
0613 Electrical Control Box Wiring Harnesses (Sheet 3 of 5)	2-222	84
0613 Electrical Control Box Wiring Harnesses (Sheet 4 of 5)	2-223	84
0613 Electrical Control Box Wiring Harnesses (Sheet 5 of 5)	2-224	84
0613 Cab Rear Wiring Harness	2-230	85
0613 Cab Wiring Harness (Sheet 1 of 3)	2-232	86
0613 Cab Wiring Harness (Sheet 2 of 3)	2-233	86
0613 Cab Wiring Harness (Sheet 3 of 3)	2-234	86
0613 Winch Assembly Wire Harness and Switches	2-238	87
0613 Chassis Wiring Harness (Sheet 1 of 4)	2-240	88
0613 Chassis Wiring Harness (Sheet 2 of 4)	2-241	88
0613 Chassis Wiring Harness (Sheet 3 of 4)	2-242	88
0613 Chassis Wiring Harness (Sheet 4 of 4)	2-243	88
0613 Chassis Wiring Installation (Sheet 1 of 4)	2-246	89
0613 Chassis Wiring Installation (Sheet 2 of 4)	2-247	89
0613 Chassis Wiring Installation (Sheet 3 of 4)	2-248	89
0613 Chassis Wiring Installation (Sheet 4 of 4)	2-249	89
0613 STE/ICE Components (Sheet 1 of 2)	2-252	90
0613 STE/ICE Components (Sheet 2 of 2)	2-253	90
0613 STE/ICE Engine Wiring Harness	2-256	91
0613 STE/ICE Chassis Wiring Harness	2-258	92
0616 Ventilator (Sheet 1 of 3)	2-260	93

TABLE OF CONTENTS (CONT)

	Page	Illus Figure
Group 06		
Electrical System (Cont)		
0616 Ventilator (Sheet 2 of 3)	2-261	93
0616 Ventilator (Sheet 3 of 3)	2-262	93
Group 07		
Transmission		
0705 Transmission Shift Controls (Sheet 1 of 2)	2-266	94
0705 Transmission Shift Controls (Sheet 2 of 2)	2-267	94
0708 Flywheel Assembly, Lockup Clutch, and Torque Converter (Sheet 1 of 2)	2-270	95
0708 Flywheel Assembly, Lockup Clutch, and Torque Converter (Sheet 2 of 2)	2-271	95
0710 Transmission Assembly	2-274	96
0710 Transmission Mounting	2-276	97
0710 Front Support and Main Regulator Valve	2-278	98
0710 Input Shaft and Forward Clutch	2-280	99
0710 Rear Cover Assembly	2-282	100
0710 Transmission Housing, Oil Filter, and Oil Pan	2-286	101
0713 Fifth Clutch Assembly	2-288	102
0713 Fourth Clutch, Center Support, and Third Clutch	2-290	103
0713 Planetaries and Main Shaft (Sheet 1 of 2)	2-292	104
0713 Planetaries and Main Shaft (Sheet 2 of 2)	2-293	104
0713 Second and Reverse Clutch	2-296	105
0713 First Clutch and Adapter Housing	2-298	106
0714 Governor Assembly	2-300	107
0714 Control Valve Assembly	2-302	108
0714 Lockup Cutoff Valve Assembly	2-306	109
0721 Input Charging Oil Pump	2-308	110
0721 External Filter Element, Housing, and Bracket	2-310	111
0721 Transmission Hoses, Fittings, and Solenoid (Sheet 1 of 4)	2-312	112
0721 Transmission Hoses, Fittings, and Solenoid (Sheet 2 of 4)	2-313	112
0721 Transmission Hoses, Fittings, and Solenoid (Sheet 3 of 4)	2-314	112
0721 Transmission Hoses, Fittings, and Solenoid (Sheet 4 of 4)	2-315	112
Group 08		
Transfer Case		
0801 Transfer Case Mounting	2-320	113
0801 Transfer Case Assembly (Sheet 1 of 3)	2-322	114
0801 Transfer Case Assembly (Sheet 2 of 3)	2-323	114
0801 Transfer Case Assembly (Sheet 3 of 3)	2-324	114
0803 Lockout Air Shift Chamber	2-330	115
0803 Transfer Case Shift Controls	2-332	116

TABLE OF CONTENTS (CONT)

		Page	Illus Figure
Group 08	Transfer Case (Cont)		
	0804 Transfer Case Lubrication Lines and Fittings	2-334	117
	0804 Transfer Case Lube Pump Assembly	2-336	118
Group 09	Propeller Shafts		
	0900 Propeller Shaft, Transmission to Transfer Case..	2-338	119
	0900 Propeller Shaft, No. 3 Axle to No. 4 Axle	2-340	120
	0900 Propeller Shaft, Transfer Case to No. 2 Axle..	2-342	121
	0900 Propeller Shaft, No. 2 Axle to No. 3 Axle	2-344	122
	0900 Propeller Shaft Transfer Case to No. 1 Axle..	2-346	123
Group 10	Front Axle		
	1000 No. 1 Axle Assembly.	2-348	124
	1000 No. 1 Axle Housing	2-350	125
	1002 No. 1 Differential Carrier Assembly..	2-352	126
	1003 Planetary Carrier Assembly	2-356	127
	1004 No. 1 Axle Pivot and Spindle Assembly..	2-358	128
Group 11	Rear Axles		
	1100 No. 2 Axle Assembly..	2-362	129
	1100 No. 3 Axle Assembly	2-364	130
	1100 No. 4 Axle Assembly	2-366	131
	1100 No. 2 Axle Housing	2-368	132
	1100 No. 3 Axle Housing	2-370	133
	1100 No. 4 Axle Housing	2-372	134
	1100 No. 2 and No. 3 Axle Spindle and Shaft..	2-374	135
	1102 No. 2 Differential Carrier Assembly (Sheet 1 of 2).	2-376	136
	1102 No. 2 Differential Carrier Assembly (Sheet 2 of 2).	2-377	136
	1102 No. 3 Differential Carrier Assembly..	2-382	137
	1102 No. 4 Differential Carrier Assembly..	2-386	138
	1104 No. 4 Axle Pivot and Spindle Assembly..	2-390	139
Group 12	Brake System		
	1202 Brake Assemblies, No. 1 and No. 4 Axles	2-394	140
	1202 Brake Assemblies, No. 2 and No. 3 Axles	2-398	141
	1208 Brake Chamber Assemblies (Sheet 1 of 2).	2-402	142
	1208 Brake Chamber Assemblies (Sheet 2 of 2).	2-403	142
	1208 Treadle Valve Assembly	2-406	143
	1208 Cab Air Hoses and Tubing (Sheet 1 of 5).	2-410	144
	1208 Cab Air Hoses and Tubing (Sheet 2 of 5).	2-411	144
	1208 Cab Air Hoses and Tubing (Sheet 3 of 5).	2-412	144
	1208 Cab Air Hoses and Tubing (Sheet 4 of 5).	2-413	144

TABLE OF CONTENTS (CONT)

	Page	Illus Figure
Group 12		
Brake System (Cont)		
1208 Cab Air Hoses and Tubing (Sheet 5 of 5)	2-414	144
1208 Air Couplings, Brackets, and Fittings..	2-422	145
1208 Air Tanks, Brackets, and Fittings (Sheet 1 of 2)	2-424	146
1208 Air Tanks, Brackets, and Fittings (Sheet 2 of 2)	2-425	146
1208 Service Brake Relay Valves and Fittings..	2-430	147
1208 Spring Brake Relay Valves and Fittings..	2-432	148
1208 Air Valves, Lines, and Fittings (Sheet 1 of 2)	2-434	149
1208 Air Valves, Lines, and Fittings (Sheet 2 of 2)	2-435	149
1208 Chassis Air Lines and Clamps (Sheet 1 of 3)	2-438	150
1208 Chassis Air Lines and Clamps (Sheet 2 of 3)	2-439	150
1208 Chassis Air Lines and Clamps (Sheet 3 of 3)	2-440	150
1208 Axle Air Lines, Manifolds, and Fittings (Sheet 1 of 4)	2-444	151
1208 Axle Air Lines, Manifolds, and Fittings (Sheet 2 of 4)	2-445	151
1208 Axle Air Lines, Manifolds, and Fittings (Sheet 3 of 4)	2-446	151
1208 Axle Air Lines, Manifolds, and Fittings (Sheet 4 of 4)	2-447	151
1208 Front Air Harness..	2-452	152
1208 Rear Air Harness	2-456	153
1208 Dash Manifold Valve	2-460	154
1209 Air Compressor Installation (Sheet 1 of 2)	2-462	155
1209 Air Compressor Installation (Sheet 2 of 2)	2-463	155
1209 Air Compressor Assembly (Sheet 1 of 3)	2-466	156
1209 Air Compressor Assembly (Sheet 2 of 3)	2-467	156
1209 Air Compressor Assembly (Sheet 3 of 3)	2-468	156
1209 Air Dryers (Sheet 1 of 2)	2-472	157
1209 Air Dryers (Sheet 2 of 2)	2-473	157
1209 Coalescing Filter, Aftercooler, and Manifold Installation	2-476	158
1209 Coalescing Filter	2-478	159
1209 Aftercooler	2-480	160
1211 Hand Control Valve..	2-484	161
1211 Pogo Stick Assembly	2-486	162
Group 13		
Wheels and Tire		
1311 Wheel Assembly	2-490	163
1311 Hub and Drum Assembly..	2-494	164
1311 Central Tire Inflation System (CTIS) (Sheet 1 of 7)	2-496	165
1311 Central Tire Inflation System (CTIS) (Sheet 2 of 7)	2-497	165
1311 Central Tire Inflation System (CTIS) (Sheet 3 of 7)	2-498	165
1311 Central Tire Inflation System (CTIS) (Sheet 4 of 7)	2-499	165

TABLE OF CONTENTS (CONT)

		Page	Illus Figure
Group 13	Wheels and Tire (Cont)		
	1311 Central Tire Inflation System (CTIS) (Sheet 5 of 7)	2-500	165
	1311 Central Tire Inflation System (CTIS) (Sheet 6 of 7)	2-501	165
	1311 Central Tire Inflation System (CTIS) (Sheet 7 of 7)	2-502	165
	1311 CTIS Controller	2-506	166
	1311 CTIS Manifold	2-508	167
	1313 Tire	2-512	168
Group 14	Steering System		
	1401 Steering Wheel and Column Assembly..	2-514	169
	1401 Steering Linkage	2-516	170
	1401 Steering Tee Box Assembly	2-520	171
	1401 Steering Reduction Gear Assembly/Installation..	2-522	172
	1401 Front Steering Shaft Assembly	2-524	173
	1401 Rear No. 3 Steering Shaft Assembly	2-526	174
	1401 Rear No. 1, 4, and 5 Steering Shaft Assemblies..	2-528	175
	1401 Rear No. 2 Steering Shaft Assembly	2-530	176
	1401 Drag Link No. 1 and Pitman Arm	2-532	177
	1401 Drag Link No. 4 and Pitman Arm	2-534	178
	1407 Steering Gear Assembly	2-536	179
	1410 Power Steering Pump Installation	2-540	180
	1410 Power Steering Pump Assembly (Sheet 1 of 2).	2-542	181
	1410 Power Steering Pump Assembly (Sheet 2 of 2).	2-543	181
	1410 Auxiliary Power Steering Pump Manifold (Sheet 1 of 2)	2-548	182
	1410 Auxiliary Power Steering Pump Manifold (Sheet 2 of 2)	2-549	182
	1410 Auxiliary Power Steering Pump Assembly	2-552	183
	1411 Power Steering System Hoses and Fittings (Sheet 1 of 3).	2-556	184
	1411 Power Steering System Hoses and Fittings (Sheet 2 of 3).	2-557	184
	1411 Power Steering System Hoses and Fittings (Sheet 3 of 3)	2-558	184
	1411 Auxiliary Power Steering System Hoses and Fittings (Sheet 1 of 2).	2-562	185
	1411 Auxiliary Power Steering System Hoses and Fittings (Sheet 2 of 2).	2-563	185
	1413 Power Steering Reservoir Assembly	2-566	186
Group 15	Frame		
	1501 Frame Assembly (Sheet 1 of 6)	2-568	187
	1501 Frame Assembly (Sheet 2 of 6)	2-569	187
	1501 Frame Assembly (Sheet 3 of 6)	2-570	187
	1501 Frame Assembly (Sheet 4 of 6)	2-571	187
	1501 Frame Assembly (Sheet 5 of 6)	2-572	187
	1501 Frame Assembly (Sheet 6 of 6)	2-573	187

TABLE OF CONTENTS (CONT)

		Page	Illus Figure
Group 15	Frame (Cont)		
	1501 Steps.. .. .	2-578	188
	1503 Pintle Hook.. .. .	2-580	189
	1504 Tire Carrier and Davit Assembly .. .	2-582	190
	1506 Fifth Wheel Assembly .. .	2-584	191
	1506 Fifth Wheel Ramps.. .. .	2-588	192
Group 16	Suspension		
	1601 Spring Assembly .. .	2-590	193
	1601 Air Spring Assembly.. .. .	2-592	194
	1601 Suspension Air Lines and Fittings .. .	2-594	195
	1601 Height Control Valves .. .	2-596	196
	1601 Shock Absorbers.. .. .	2-598	197
	1605 Torque Rods and Rear Suspension (Sheet 1 of 3).. .. .	2-600	198
	1605 Torque Rods and Rear Suspension (Sheet 2 of 3).. .. .	2-601	198
	1605 Torque Rods and Rear Suspension (Sheet 3 of 3).. .. .	2-602	198
Group 18	Cab and Body		
	1801 Cab Assembly (Sheet 1 of 2).. .. .	2-604	199
	1801 Cab Assembly (Sheet 2 of 2) .. .	2-605	199
	1801 Cab Insulation (Sheet 1 of 4) .. .	2-608	200
	1801 Cab Insulation (Sheet 2 of 4) .. .	2-609	200
	1801 Cab Insulation (Sheet 3 of 4) .. .	2-610	200
	1801 Cab Insulation (Sheet 4 of 4) .. .	2-611	200
	1801 Door Assembly (Sheet 1 of 2).. .. .	2-616	201
	1801 Door Assembly (Sheet 2 of 2).. .. .	2-617	201
	1801 Hood Installation (Sheet 1 of 2).. .. .	2-622	202
	1801 Hood Installation (Sheet 2 of 2).. .. .	2-623	202
	1801 Rear Splash Guards and Cab Ladders.. .. .	2-628	203
	1801 Cab Trim .. .	2-630	204
	1801 Cab Access Panels (Sheet 1 of 2).. .. .	2-632	205
	1801 Cab Access Panels (Sheet 2 of 2) .. .	2-633	205
	1802 Cab Glass .. .	2-636	206
	1802 Right Front Fender.. .. .	2-638	207
	1802 Left Front Fender .. .	2-640	208
	1802 Right Hand and Left Hand Rear Fenders .. .	2-642	209
	1806 Driver Seat Assembly (Sheet 1 of 2).. .. .	2-644	210
	1806 Driver Seat Assembly (Sheet 2 of 2).. .. .	2-645	210
	1806 Passenger Seat Assembly (Sheet 1 of 2).. .. .	2-648	211
	1806 Passenger Seat Assembly (Sheet 2 of 2) .. .	2-649	211

TABLE OF CONTENTS (CONT)

		Page	Illus Figure
Group 18	Cab and Body (Cont)		
	1806 Rear Passenger Seat Assembly (Sheet 1 of 2)	2-652	212
	1806 Rear Passenger Seat Assembly (Sheet 2 of 2)	2-653	212
	1808 Stowage Box Assembly	2-656	213
	1808 Tool Stowage Box Assembly	2-658	214
	1808 Wheel Chock Stowage Box Assembly	2-660	215
Group 20	Winches		
	2001 Dressed Winch Assembly (Sheet 1 of 2)	2-662	216
	2001 Dressed Winch Assembly (Sheet 2 of 2)	2-663	216
	2001 Main Winch Assembly (Sheet 1 of 2)	2-666	217
	2001 Main Winch Assembly (Sheet 2 of 2)	2-667	217
	2001 Main Winch Counterbalance Valve	2-672	218
	2001 Main Winch Drive Motor	2-674	219
	2001 Auxiliary Winch Assembly (Sheet 1 of 2)	2-678	220
	2001 Auxiliary Winch Assembly (Sheet 2 of 2)	2-679	220
	2001 Auxiliary Inch Counterbalance Valve	2-682	221
	2001 4-Way Control Valve	2-684	222
	2001 Winch Platform	2-686	223
	2001 Winch Ladder	2-688	224
	2004 PTO Assembly (Sheet 1 of 2)	2-690	225
	2004 PTO Assembly (Sheet 2 of 2)	2-691	225
	2004 PTO Shafts	2-694	226
Group 22	Body Accessory Items		
	2202 Windshield Wiper Assembly (Sheet 1 of 2)	2-696	227
	2202 Windshield Wiper Assembly (Sheet 2 of 2)	2-697	227
	2202 Heater Hoses and Fittings (Sheet 1 of 2)	2-700	228
	2202 Heater Hoses and Fittings (Sheet 2 of 2)	2-701	228
	2202 Heater Control Panel Assembly	2-704	229
	2202 Air Horns	2-706	230
	2202 Reflectors	2-708	231
	2202 Exhaust Fan (Sheet 1 of 2)	2-710	232
	2202 Exhaust Fan (Sheet 2 of 2)	2-711	232
	2202 Primary Heater, 24V Front	2-714	233
	2202 Mirror Assembly	2-718	234
	2210 Data Plates (Sheet 1 of 12)	2-720	235
	2210 Data Plates (Sheet 2 of 12)	2-721	235
	2210 Data Plates (Sheet 3 of 12)	2-722	235
	2210 Data Plates (Sheet 4 of 12)	2-723	235

TABLE OF CONTENTS (CONT)

		Page	Illus Figure
Group 22	Body Accessory Items (Cont)		
	2210 Data Plates (Sheet 5 of 12)	2-724	235
	2210 Data Plates (Sheet 6 of 12)	2-725	235
	2210 Data Plates (Sheet 7 of 12)	2-726	235
	2210 Data Plates (Sheet 8 of 12)	2-727	235
	2210 Data Plates (Sheet 9 of 12)	2-728	235
	2210 Data Plates (Sheet 10 of 12)	2-729	235
	2210 Data Plates (Sheet 11 of 12)	2-730	235
	2210 Data Plates (Sheet 12 of 12)	2-731	235
Group 24	Hydraulic System		
	2401 Hydraulic Pump Assembly	2-734	236
	2406 Hydraulic Filter	2-736	237
	2406 Hydraulic Lines and Fittings (Sheet 1 of 3)	2-738	238
	2406 Hydraulic Lines and Fittings (Sheet 2 of 3)	2-739	238
	2406 Hydraulic Lines and Fittings (Sheet 3 of 3)	2-740	238
	2406 Pneumatic Lines and Fittings	2-744	239
	2408 Hydraulic Reservoir Assembly	2-748	240
Group 33	Special Purpose Kits		
	3301 Engine Shipping Container	2-750	241
	3301 Transmission Shipping Container	2-752	242
	3301 Transfer Case Shipping Container	2-754	243
	3303 Engine Arctic Kit (Sheet 1 of 5)	2-756	244
	3303 Engine Arctic Kit (Sheet 2 of 5)	2-757	244
	3303 Engine Arctic Kit (Sheet 3 of 5)	2-758	244
	3303 Engine Arctic Kit (Sheet 4 of 5)	2-759	244
	3303 Engine Arctic Kit (Sheet 5 of 5)	2-760	244
	3303 Arctic Kit Battery Box Assembly	2-764	245
	3303 Arctic Kit Wiring Harness	2-766	246
	3401 Rifle Mounting	2-768	247
Group 47	Non-Electric Gages		
	4701 Speedometer and Tachometer Cables	2-770	248
	4702 Air Pressure Gages	2-772	249
Group 91	Chemical, Biological, And Radiological (CBR) Equipment		
	9111 Gas Particulate Filter Unit (GPFU) Assembly (Sheet 1 of 3)	2-774	250
	9111 Gas Particulate Filter Unit (GPFU) Assembly (Sheet 2 of 3)	2-775	250
	9111 Gas Particulate Filter Unit (GPFU) Assembly (Sheet 3 of 3)	2-776	250
	9120 Decontamination Kit	2-780	251
	9131 Chemical Alarm Kit	2-782	252

TABLE OF CONTENTS (CONT)

	Page	Illus Figure
Group 94	Repair Kits	
	9401 RepairKits	2-784 KITS
Group 95	General Use Standardized Parts	
	9501 Bulk Material	2-806 BULK
Section III.	SPECIAL TOOLS LIST	3-1
Group 26	Tools and Test Equipment	
	2604 Special Tools (Sheet 1 of 29)	3-2 253
	2604 Special Tools (Sheet 2 of 29)	3-3 253
	2604 Special Tools (Sheet 3 of 29)	3-4 253
	2604 Special Tools (Sheet 4 of 29)	3-5 253
	2604 Special Tools (Sheet 5 of 29)	3-6 253
	2604 Special Tools (Sheet 6 of 29)	3-7 253
	2604 Special Tools (Sheet 7 of 29)	3-8 253
	2604 Special Tools (Sheet 8 of 29)	3-9 253
	2604 Special Tools (Sheet 9 of 29)	3-10 253
	2604 Special Tools (Sheet 10 of 29)	3-11 253
	2604 Special Tools (Sheet 11 of 29)	3-12 253
	2604 Special Tools (Sheet 12 of 29)	3-13 253
	2604 Special Tools (Sheet 13 of 29)	3-14 253
	2604 Special Tools (Sheet 14 of 29)	3-15 253
	2604 Special Tools (Sheet 15 of 29)	3-16 253
	2604 Special Tools (Sheet 16 of 29)	3-17 253
	2604 Special Tools (Sheet 17 of 29)	3-18 253
	2604 Special Tools (Sheet 18 of 29)	3-19 253
	2604 Special Tools (Sheet 19 of 29)	3-20 253
	2604 Special Tools (Sheet 20 of 29)	3-21 253
	2604 Special Tools (Sheet 21 of 29)	3-22 253
	2604 Special Tools (Sheet 22 of 29)	3-23 253
	2604 Special Tools (Sheet 23 of 29)	3-24 253
	2604 Special Tools (Sheet 24 of 29)	3-25 253
	2604 Special Tools (Sheet 25 of 29)	3-26 253
	2604 Special Tools (Sheet 26 of 29)	3-27 253
	2604 Special Tools (Sheet 27 of 29)	3-28 253
	2604 Special Tools (Sheet 28 of 29)	3-29 253
	2604 Special Tools (Sheet 29 of 29)	3-30 253
Section IV.	NATIONAL STOCK NUMBER AND PART NUMBER INDEX	I-1

UNIT, DIRECT SUPPORT AND GENERAL SUPPORT MAINTENANCE REPAIR PARTS AND SPECIAL TOOLS LIST

Section I. INTRODUCTION

1. SCOPE

This manual lists and authorizes spares and repair parts; special tools; special test, measurement, and diagnostic equipment (TMDE); and other special support equipment required for performance of direct support and general support maintenance of the HET Tractor. It authorizes the requisitioning, issue, and disposition of spares, repair parts and special tools as indicated by the Source, Maintenance, and Recoverability (SMR) codes.

2. GENERAL

This Repair Parts and Special Tools List (RPSTL) is divided into the following sections:

a. Section II. Repair Parts List. A list of spares and repair parts authorized by this RPSTL for use in the performance of maintenance. The list also includes parts which must be removed for replacement of the authorized parts. Parts lists are composed of functional groups in ascending alphanumeric sequence, with the parts in each group listed in ascending figure and item number sequence. Bulk materials are listed in NSN sequence.

b. Section III. Special Tools List. A list of special tools, special TMDE, and other special support equipment authorized by this RPSTL for the performance of maintenance.

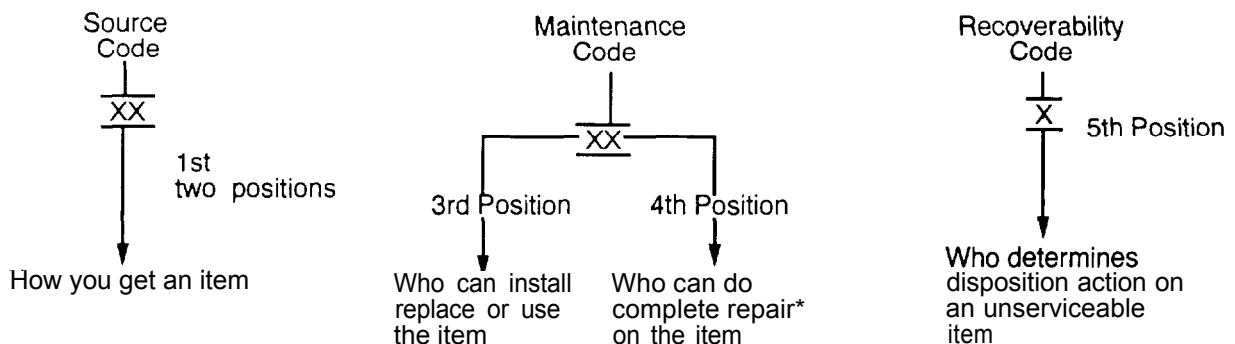
c. Section IV. National Stock Number and Part Number Index. A list, in National item identification number (NIIN) sequence, of all National stock numbers (NSNs) appearing in the listings, followed by a list in alphanumeric sequence of all part numbers appearing in the listings. NSNs and part numbers are cross-referenced to each illustration figure and item number appearance.

3. EXPLANATION OF COLUMNS

a. Illustration (Column (1)). This column is divided as follows:

- (1) ((a) FIG NO.) Figure Number. Indicates the figure number illustrating an exploded view of a functional group.
- (2) ((b) ITEM NO.). Indicates the number used to identify items called out in the illustration.

b. SMR CODE (Column (2)). The Source, Maintenance, and Recoverability (SMR) code is a five-position code containing supply/requisitioning information, maintenance category authorization criteria, and disposition instructions, as shown in the following breakout:



*Complete Repair: Maintenance capacity, capability, and authority to perform all the corrective maintenance tasks of the "Repair" function in a use/user environment in order to restore serviceability to a failed item.

3. EXPLANATION OF COLUMNS (CONT)

(1) Source Code. The source code tells you how you get an item needed for maintenance, repair, or overhaul of an end item/equipment. Source codes are always the first two positions of the SMR code. Explanations of source codes follow:

Code	Explanation
PA	Item procured and stocked for anticipated or known usage.
PB	Item procured and stocked for insurance purposes because essentiality dictates that a minimum quantity be available in the supply system.
PC	Item procured and stocked and which otherwise would be coded PA except that it is deteriorative in nature.
PD	Support item, excluding support equipment, procured for initial issue or outfitting and stocked only for subsequent or additional initial issues or outfittings. Not subject to automatic replenishment.
PE	Support equipment procured and stocked for initial issue or outfitting to specified maintenance repair activities.
PF	Support equipment which will not be stocked but which will be centrally procured on demand.
PG	Item procured and stocked to provide for sustained support for the life of the equipment. It is applied to an item peculiar to the equipment which because of probable discontinuance or shutdown of production facilities would prove uneconomical to reproduce at a later time.
KD	An item of depot overhaul/repair kit and not purchased separately. Depot kit defined as a kit that provides items required at the time of overhaul or repair.
KF	An item of a maintenance kit and not purchased separately. Maintenance kit defined as a kit that provides an item that can be replaced at unit or intermediate levels of maintenance.
KB	Item included in both a depot overhaul/repair kit and a maintenance kit.

MO - (Made at Unit Category)
MF - (Made at DS Category)
MH - (Made at GS Category)
MD - (Made at Depot)

items with these codes are not to be requested/requisitioned individually. They must be made from bulk material which is identified by Part Number and Commercial and Government Entity (CAGE) in the Description column and listed in the Bulk Material group in the repair parts list in this manual. If the item is authorized to you by the third position code of the SMR code, but the source code indicates it is made at a higher category, order the item from the higher category of maintenance.

AO - (Assembled by Unit Category)
AF - (Assembled by DS Category)
AH - (Assembled by GS Category)
AD - (Assembled by Depot)

Items with these codes are not to be requested/requisitioned individually. The parts that make up the assembled item must be requisitioned or fabricated and assembled at the category of maintenance indicated by the source code. If the third position code of the SMR code authorizes you to replace the item, but the source code indicates the item is assembled at a higher category, order the item from the higher category of maintenance.

Code	Explanation
X A -	Do not requisition an "XA"-coded item. Order its next higher assembly. (Also, refer to the NOTE below.)
XB -	If an "XB" item is not available from salvage, order it using the Commercial and Government Entity (CAGE) and part number given.
XC -	Installation drawing, diagram, instruction sheet, field service drawing, that is identified by manufacturer's part number.
XD -	Item is not stocked. Order an "XD"-coded item through normal supply channels using the CAGE and part number given, if no NSN is available.

NOTE

Cannibalization or controlled exchange, when authorized, may be used as a source of supply for items with the above source codes, except for those source coded "XA."

(2) Maintenance Code. Maintenance codes tell you the category(s) of maintenance authorized to USE and REPAIR support items. The maintenance codes are entered in the third and fourth positions of the SMR code as follows:

(a) The maintenance code entered in the third position tells you the lowest maintenance category authorized to remove, replace, and use an item. The maintenance code entered in the third position will indicate authorization to one of the following categories of maintenance.

Code	Application/Explanation
C -	Crew or operator maintenance done within unit maintenance.
O -	Unit category can remove, replace, and use the item.
F -	Direct support category can remove, replace, and use the item.
H -	General support category can remove, replace, and use the item.
D -	Depot category can remove, replace, and use the item.

(b) The maintenance code entered in the fourth position tells you whether or not the item is to be repaired and identifies the lowest maintenance category with the capability to do complete repair (i.e., perform all authorized repair functions). This position will contain one of the following maintenance codes.

NOTE

Some limited repair may be done on the item at a lower category of maintenance, if authorized by the Maintenance Allocation Chart (MAC) and SMR codes.

Code	Application/Explanation
O -	Unit is the lowest category that can do complete repair of the item.
F -	Direct support is the lowest category that can do complete repair of the item.
H -	General support is the lowest category that can do complete repair of the item.
D -	Depot is the lowest category that can do complete repair of the item.
Z -	Nonreparable. No repair is authorized.
B -	No repair is authorized. (No parts or special tools are authorized for the maintenance of a "B" coded item.) However, the item may be reconditioned by adjusting, lubricating, etc., at the user level.

(3) Recoverability Code. Recoverability codes are assigned to items to indicate the disposition action on unserviceable items. The recoverability code is entered in the fifth position of the SMR Code as follows:

Recoverability Codes	Definition
Z -	Nonreparable item. When unserviceable, condemn and dispose of the item at the category of maintenance shown in the third position of SMR code.
O -	Reparable item. When uneconomically reparable, condemn and dispose of the item at unit category.
F -	Reparable item. When uneconomically reparable, condemn and dispose of the item at the direct support category.
H -	Reparable item. When uneconomically reparable, condemn and dispose of the item at the general support category.
D -	Reparable item. When beyond lower category repair capability, return to depot. Condemnation and disposal not authorized below depot category.
A -	Item requires special handling or condemnation procedures because of specific reasons (i.e., precious metal content, high dollar value, critical material, or hazardous material). Refer to appropriate manuals/directives for specific instructions.

c. National Stock Number (Column (3)). Lists the NSN assigned to the item. Use the NSN for requests/requisitions.

d. CAGE (Column (4)). The CAGE is a five-digit numeric code which is used to identify the manufacturer, distributor, or Government agency, etc., that supplies the item.

e. Part Number (Column (5)). Indicates the primary number used by the manufacturer (individual, company, firm, corporation, or Government activity), which controls the design and characteristics of the item by means of its engineering drawings, specifications, standards, and inspection requirements to identify an item or range of items.

NOTE

When you use an NSN to requisition an item, the item you receive may have a different part number from the part ordered, but go ahead and use or furnish it as the replacement part.

f. Description (Column (6)). The column includes the following information:

(1) The Federal item name and, when required, a minimum description to identify the item.

(2) Not applicable.

(3) Items that are included in kits and sets are listed below the name of the kit or set.

(4) Spare/repair parts that make up an assembled item are listed immediately following the assembled item line entry.

(5) Part numbers for bulk materials are referenced in the description column in the line item entry for the item to be manufactured/fabricated.

(6) Not applicable.

(7) The USABLE ON CODE, when applicable (see paragraph 4, Special Information).

(8) Not applicable

(9) The item name listed in the Description and Usable On Code column, when applicable, is indented by using dots (.) to show the relationship to the next higher assembly. Indentions shall not exceed five positions.

g. U/M (Column (7)). The Unit of Measure (U/M) indicates the measure (e.g., foot, gallon, pound) or count (e.g., each, dozen, gross) of a listed item. A two-character alpha code (e.g., FT, GL, LB, EA, DZ, GR) appears in this column to indicate the measure or count. If the U/M code appearing in this column differs from the Unit of Issue (U/I) code listed in the Army Master Data File (AMDF), request the lowest U/I that will satisfy your needs.

h. QTY INC IN UNIT (Column (8)). The Quantity Incorporated in Unit (CITY INC IN UNIT) indicates the quantity of the item used in the breakout shown on the illustration figure, which is prepared for a functional group, subfunctional group, or an assembly. A "V" appearing in this column in lieu of a quantity indicates that no specific quantity is applicable (e.g., shims, spacers).

4. SPECIAL INFORMATION

a. USABLE ON CODE title appears in the lower right corner of column (6), Description. Usable on codes are shown in the right-hand margin of the description column. Uncoded items are applicable to all models. Identification of the usable on codes used in this publication are:

Code	Used on
MTH	Model M 1070

b. Bulk materials required to manufacture items are listed in the Bulk Material Group of this manual. Items that are to be made from bulk material are identified in the description column by part number and CAGE in this manual. Detailed manufacturing instructions for items source coded to be manufactured or fabricated are found in TM 9-2320-360-20, Unit Maintenance Manual for Truck, Tractor, M1070, 8x8, Heavy Equipment Transporter, and TM 9-2320-360-34, Direct Support and General Support Maintenance Manual for Truck, Tractor, M1070, 8x8, Heavy Equipment Transporter (HET).

c. Detailed assembly instructions for items source coded to be assembled from component spare/repair parts are found in TM 9-2320-360-20, Unit Maintenance Manual for Truck, Tractor, M1070, 8x8, Heavy Equipment Transporter, and TM 9-2320-360-34, Direct Support and General Support Maintenance Manual for Truck, Tractor, M1070, 8x8, Heavy Equipment Transporter (HET). Items that make up the assembly are listed immediately following the assembled item entry.

d. Line item entries for repair parts kits and sets appear at the end of the book in FGC 9401.

e. Items which have the word BULK in the figure number column will have an index number shown in the item number column. This index number is furnished for use as a cross-reference between the National Stock Number/Part Number Index and the bulk material list in Section II.

f. The following publications pertain to the HET Tractor and its components:

TM 9-2320-360-10, Operator's Manual for Truck, Tractor, M1070,8x8, Heavy Equipment Transporter (HET)

TM 9-2320-360-10-HR, Hand Receipt Manual for Truck, Tractor, M1070, 8x8, Heavy Equipment Transporter (HET)

LO 9-2320-360-12, Lubrication Order for Truck, Tractor, M1070, 8x8, Heavy Equipment Transporter (HET)

TM 9-2320-360-20 (Volumes 1, 2, and 3), Unit Maintenance Manual for Truck, Tractor, M1070, 8x8, Heavy Equipment Transporter (HET)

TM 9-2320-360-34 (Volumes 1 and 2), Direct Support and General Support Maintenance Manual for Truck, Tractor, M1070, 8x8, Heavy Equipment Transporter (HET)

TB 9-2320-360-14, Warranty Technical Bulletin for Truck, Tractor, M1070, 8x8, Heavy Equipment Transporter (HET)

g. Throughout the Electrical System section, Functional Group Code (FGC) 0600, there are several cases where electrical harness illustrations are continued on succeeding page(s). Leader lines are shown to indicate where the illustrations connect. See page 2-240, Figure 88, Sheets 1 of 4 and 2 of 4 for an example of this situation.

5. HOW TO LOCATE REPAIR PARTS

a. When National Stock Number or Part Number Is Not Known:

(1) First. Using the table of contents, determine the functional group or subfunctional group to which the item belongs. This is necessary since figures are prepared for functional groups and subfunctional groups, and listings are divided into the same groups.

(2) Second. Find the figure covering the functional group or subfunctional group to which the item belongs,

(3) Third. Identify the item on the figure and note the item number of the item.

(4) Fourth. Refer to the Repair Parts List for the figure to find the line item entry for the item number noted on the figure.

b. When National Stock Number or Part Number Is Known:

(1) First. Using the Index of National Stock Numbers and Part Numbers, find the pertinent National stock number or part number. The NSN index is in National Item Identification Number (NIIN)* sequence. The part numbers in the Part Number index are listed in ascending alphanumeric sequence. Both indexes cross-reference you to the illustration figure and item number of the item you are looking for.

The NIIN consists of the last nine digits of the NSN (i.e., 5305-01-674-1467).

NSN
NIIN

(2) Second. After finding the figure and item number, verify that the item is the one you're looking for, then locate the item number in the repair parts list for the figure.

6. ABBREVIATIONS

The abbreviations used in this manual are found in MIL-STD-12.

Section II. REPAIR PARTS LIST

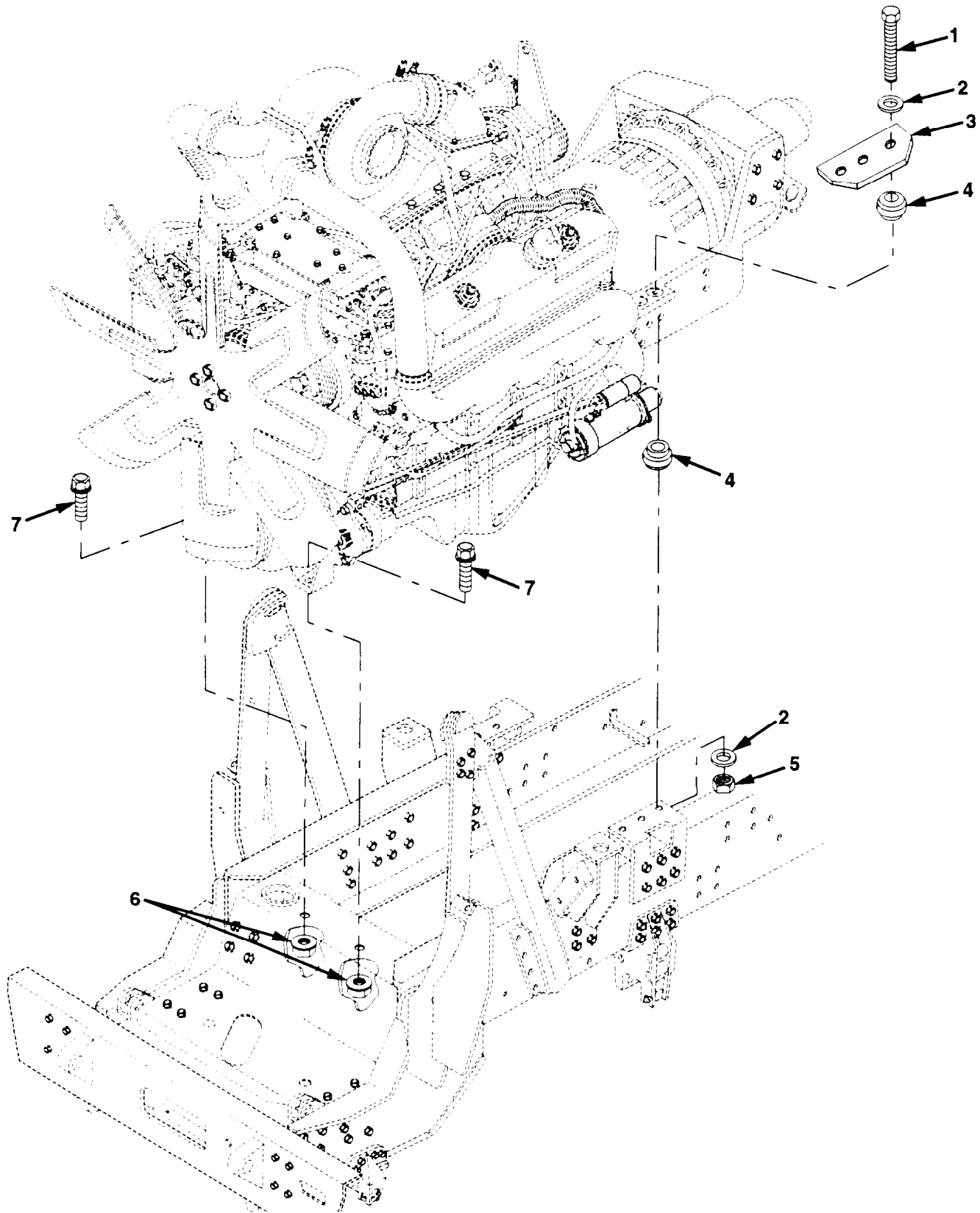


Figure 1. Engine Mounting

Section II. REPAIR PARTS LIST

(1) ILLUSTRATION		(2)	(3)	(4)	(5)	(6)	(7)	(8)
(a) FIG. NO.	(b) ITEM NO.	SMR CODE	NATIONAL STOCK NUMBER	CAGE	PART NUMBER	DESCRIPTION USABLE ON CODE	UM	QTY INC IN UNIT
						GROUP 0100 ENGINE MOUNTING		
1	1	PAFZZ	- - -	45152	60690AX	SCREW,CAP 5/8-11 x 4	EA	6
1	2	PAFZZ	5310-00-614-3505	96906	MS15795-820	WASHER,FLAT 5/8	EA	12
1	3	PBFZZ	5365-01-160-2502	45152	21810FX	SPACER,PLATE	EA	2
1	4	PAFZZ	5340-00-572-8604	76005	J-7165-1	MOUNT,RESILIENT	EA	12
1	5	PAFZZ	5310-01-082-6166	OKS39	TLA-5811-S-GRC	NUT,SELF-LOCKING 5/8-11	EA	6
1	6	PAFZZ	5310-01-111-0645	45152	110311A	NUT,SELF-LOCKING 5/8-11	EA	2
1	7	PAFZZ	5306-01-156-5429	45152	115217A	BOLT,MACHINE,FLG 5/8-11 X 2	EA	2

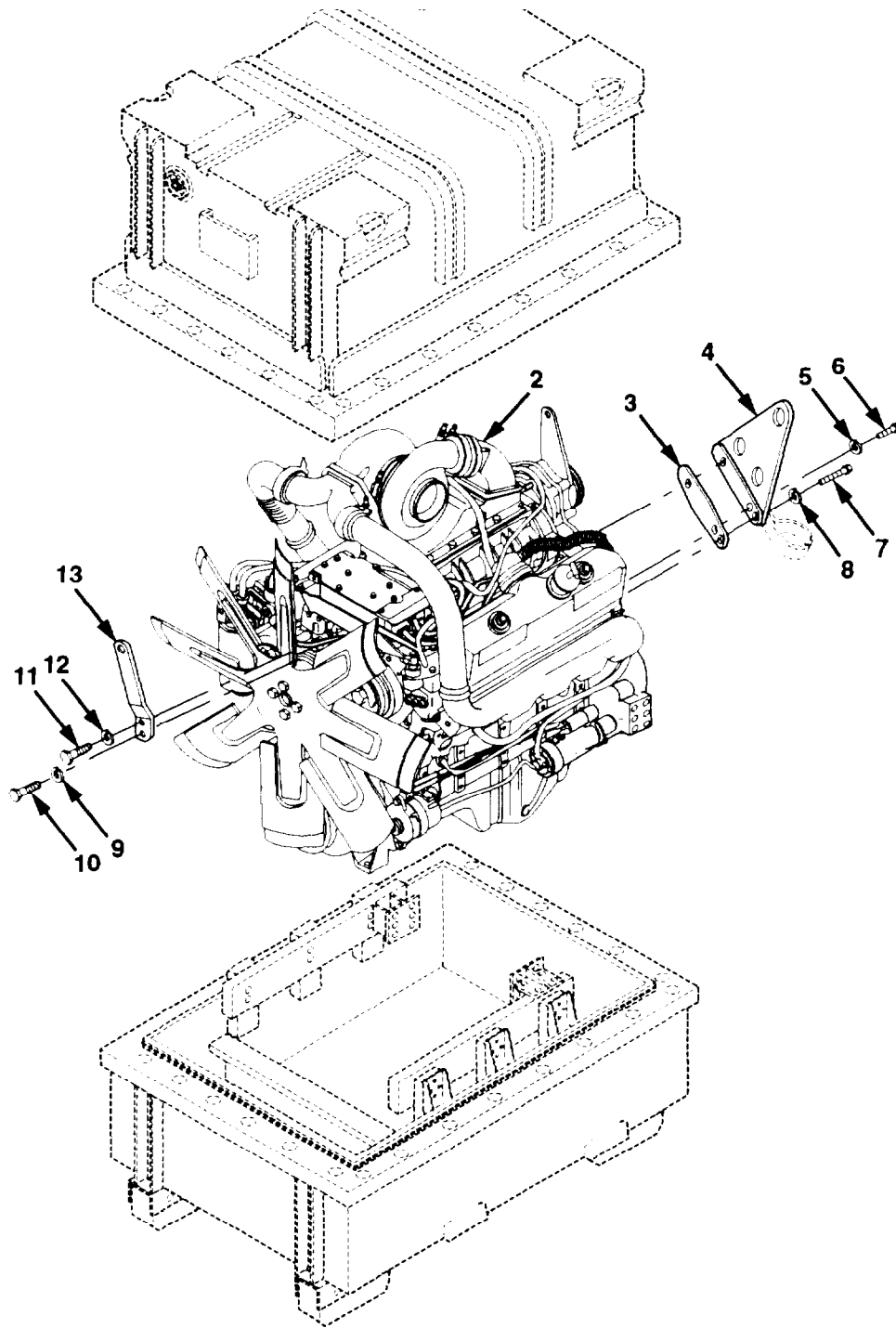


Figure 2. Engine Assembly

Section II. REPAIR PARTS LIST

(1) ILLUSTRATION		(2)	(3)	(4)	(5)	(6)	(7)	(8)
(a) FIG NO	(b) ITEM NO	SMR CODE	NATIONAL STOCK NUMBER	CAGE	PART NUMBER	DESCRIPTION USABLE ON CODE	UM	QTY INC IN UNIT
						GRDUP 0100 ENGINE ASSEMBLY		
2	1	PAFHH	2815-01-335-7448	19207	57K3047	ENGINE/CONTAINER DDEC II	EA	1
2	1	PAFHH		19207	57K4184	ENGINE/CONTAINER DDEC III	EA	1
2	2	PAFHH	2815-01-354-2911	19207	12436583	. ENGINE ASSY, DRESSED DDEC II	EA	1
2	2	PAFHH		19207	12472145	. ENGINE ASSY, DRESSED DDEC III ONLY	EA	1
2	3	PAFZZ	5330-00-725-2301	72582	5117332	..GASKET	EA	2
2	4	PFFZZ	5340-01-157-1763	72582	5133354	..BRACKET	EA	2
2	5	PAFZZ	5310-00-261-7340	96906	MS35338-8	..WASHER,LOCK 3/8	EA	1
2	6	PAFZZ	5305-01-054-2280	72582	5101377	..SCREW,CAP,HEX 3/8-16 X 1	EA	1
2	7	PAOZZ	5306-01-166-2607	72582	8921935	..BOLT,SELF-LOCKING 7/16-14 X 1 1/8	EA	2
2	8	PAOZZ	5310-00-209-0965	96906	MS35338-47	..WASHER,LOCK 7/16	EA	2
2	9	PAFZZ	5310-00-584-5272	96906	MS35338-48	..WASHER,LOCK 1/2	EA	1
2	10	PAFZZ	5305-00-225-3661	96906	MS35307-424	..SCREW,CAP,HEX 1/2-13 X 4 1/4	EA	1
2	11	PAFZZ	5305-00-224-1176	72582	223435	..SCREW,CAP,HEXAGON 5/8-11 X 1 3/4	EA	1
2	12	PAFZZ	5310-00-820-6653	96906	MS35338-50	..WASHER,LOCK 5/8	EA	1
2	13	PFFZZ	5340-01-336-5418	72582	8928612	..BRACKET,LIFT	EA	1

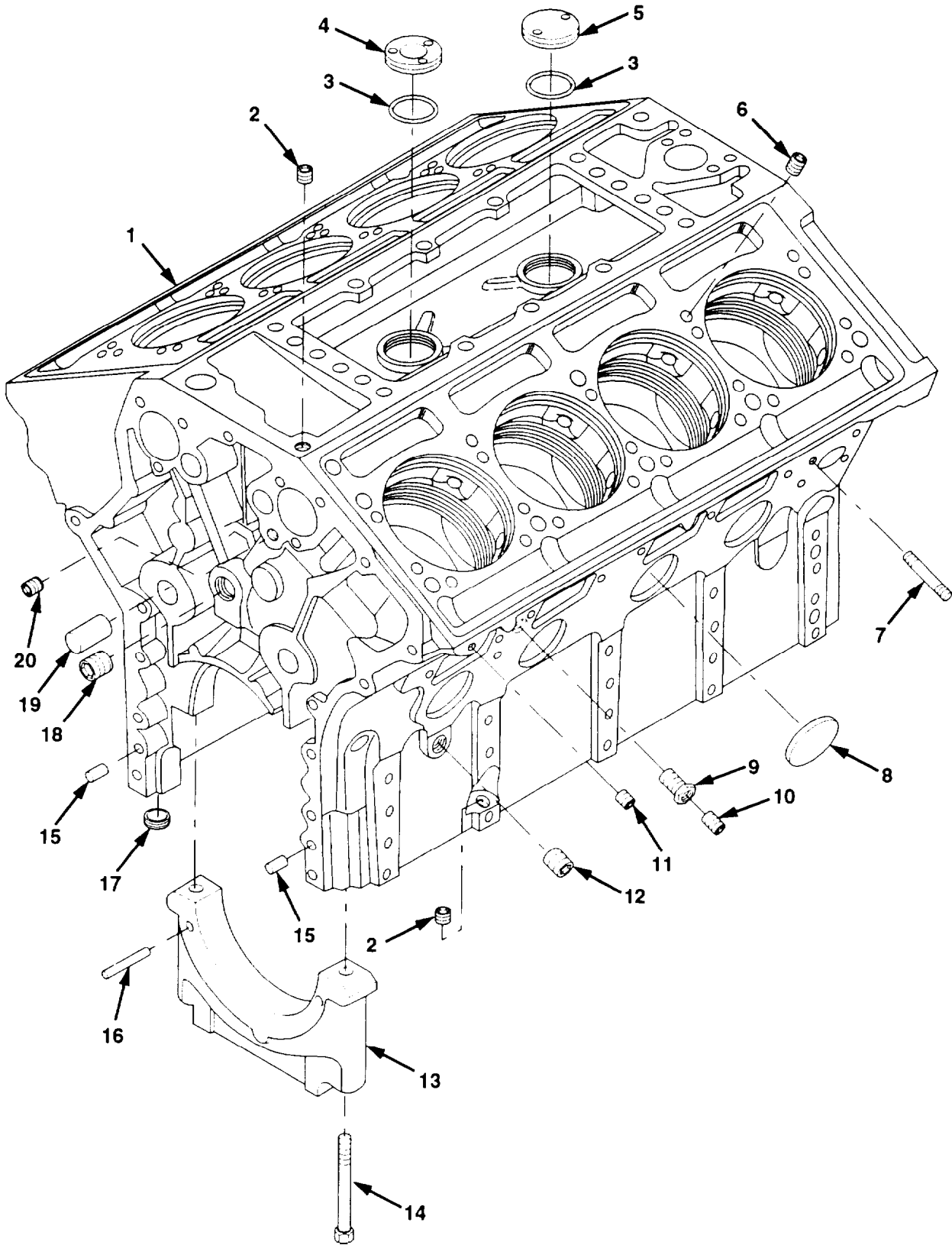


Figure 3. Cylinder Block (Sheet 1 of 3)

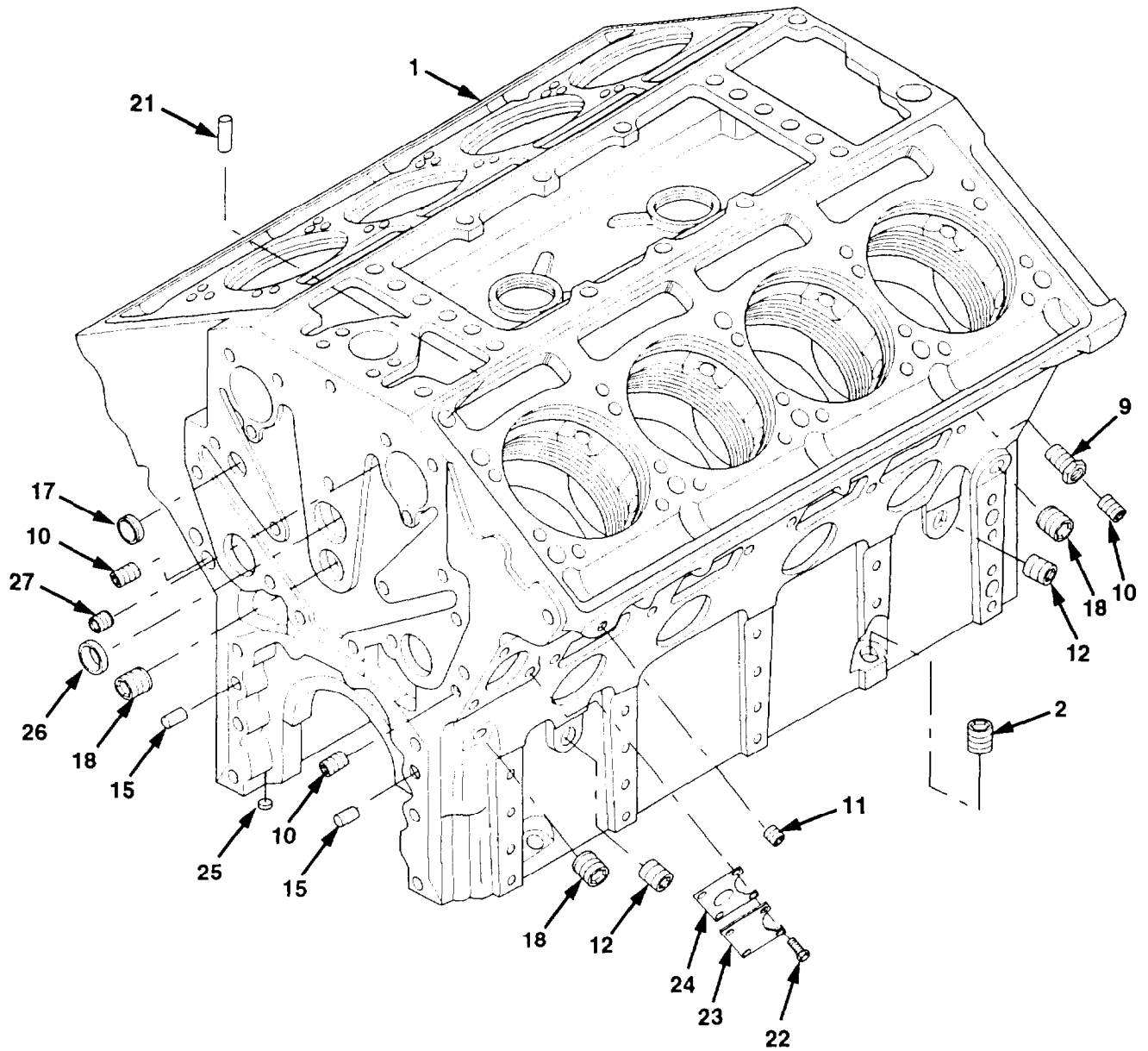


Figure 3. Cylinder Block (Sheet 2 of 3)

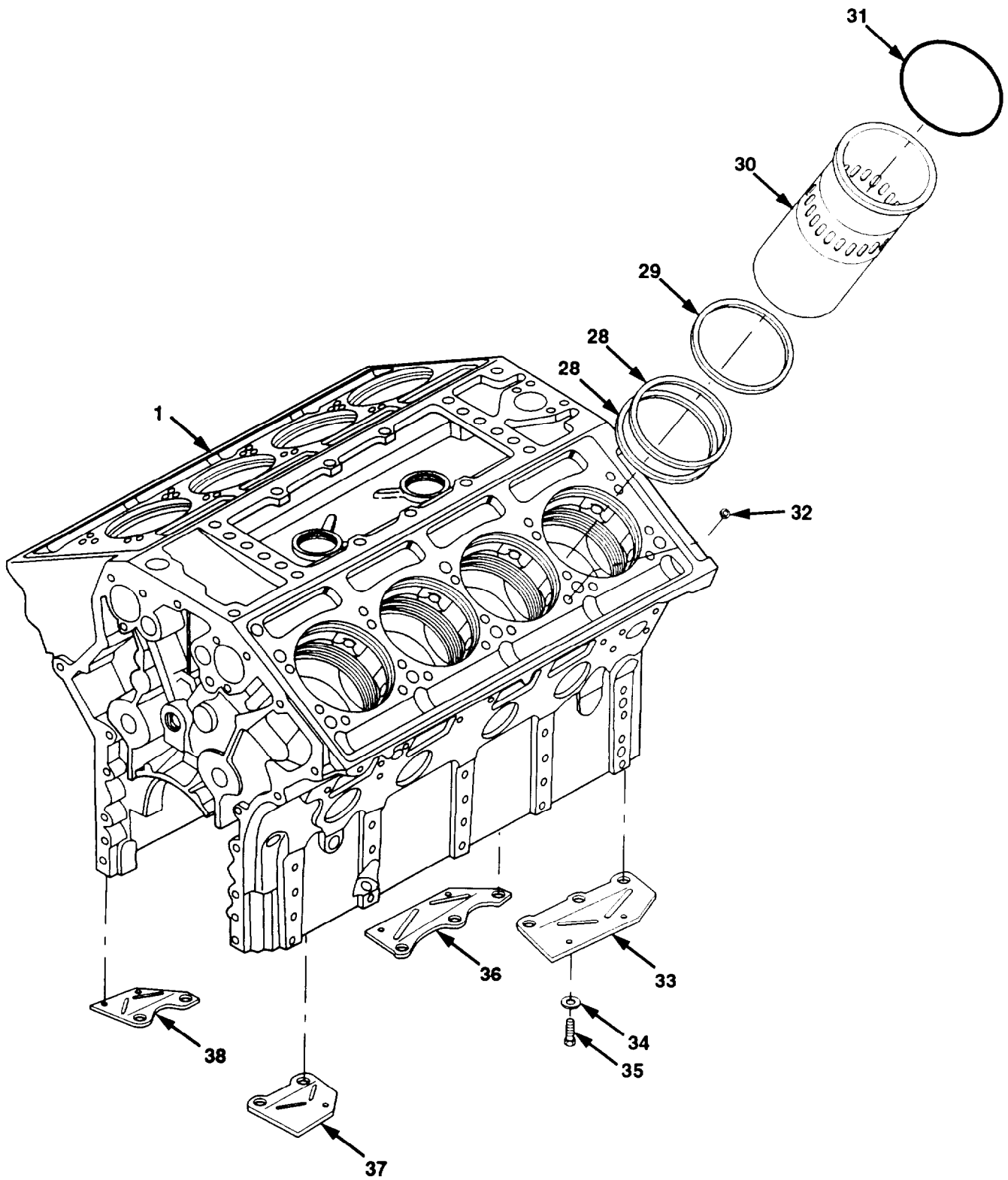


Figure 3. Cylinder Block (Sheet 3 of 3)

Section II. REPAIR PARTS LIST

(1) ILLUSTRATION		(2)	(3)	(4)	(5)	(6)	(7)	(8)
(a) FIG NO.	(b) ITEM NO.	SMR CODE	NATIONAL STOCK NUMBER	CAGE	PART NUMBER	DESCRIPTION USABLE ON CODE	UM	QTY INC IN UNIT
						GROUP 0101 CYLINDER BLOCK		
3	1	PBHHH	2815-01-113-9311	72582	8923317	ENGINE BLOCK,DIESEL	EA	1
3	2	PAHZZ	4730-00-089-2515	21450	444618	PLUG,PIPE	EA	7
3	3	PAHZZ	5330-00-769-4882	72582	5138659	GASKET PART OF KIT P/N 23512685	EA	2
3	4	PAHZZ	2815-01-157-3547	72582	5101033	ADAPTER,INLET,CYL	EA	1
3	5	PAHZZ	5340-00-231-1990	72582	5138646	PLUG,PROTECTIVE	EA	1
3	6	PAHZZ	4730-01-247-7108	72582	8925531	PLUG	EA	14
3	7	PAFZZ	5307-01-248-9867	72582	8927270	STUD,BLOCK ASSEMBLY 3/8-16-24 X 1 5/8	EA	2
3	8	PAHZZ	5340-00-255-4423	72582	5139989	PLUG,EXPANSION	EA	8
3	9	PAHZZ	3120-01-082-2541	72582	5146913	BUSHING	EA	2
3	10	PAHZZ	4730-01-189-6392	72582	8924517	PLUG	EA	4
3	11	PAHZZ	4730-00-371-5337	72582	8924380	PLUG,PIPE W/ SEAL, 1/8-27	EA	2
3	12	PAHZZ	4730-00-604-7953	72582	143969	PLUG,PIPE	EA	3
3	13	PAHZZ	3120-01-082-2150	72582	5146497	CAP,BRG,UNFINISHED	EA	5
3	13	PAHZZ	3130-01-164-5532	72582	5149220	CAP,ERG,FINISHED	EA	5
3	14	PAHZZ	5306-01-208-7958	72582	8924272	BOLT,MACHINE 12 PT. 11/16-11 X 6 29/32	EA	10
3	15	PAHZZ	5315-00-524-7660	72582	5151576	PIN,STRAIGHT,HDLS	EA	4
3	15	PAHZZ	5315-00-014-1346	72582	141346	PIN,STRAIGHT,HDLS	EA	4
3	17	PAHZZ	5340-01-144-1937	72582	5139988	PLUG 1 INCH	EA	4
3	18	PAHZZ	4730-01-188-3492	72582	8923313	PLUG,PIPE	EA	4
3	19	PAHZZ	5315-00-241-7484	72582	5154319	PIN,STRAIGHT,HDLS	EA	1
3	20	PAHZZ	4730-01-210-4252	72582	8923916	PLUG,PIPE 1/2 INCH	EA	2
3	21	PAHZZ	5315-01-137-3373	72582	5103045	PIN	EA	3
3	22	PAHZZ	5306-01-193-9291	72582	8927580	BOLT 3/8-16 X 1 1/64	EA	4
3	23	PAHZZ	5340-00-833-0822	72582	5117733	COVER,ACCESS	EA	1
3	24	PAHZZ	5330-00-745-7776	72582	5117734	GASKET PART OF KIT P/N 23512685	EA	1
3	25	PAHZZ	5340-00-598-5135	72582	9428477	PLUG,EXPANSION 15/16 INCH	EA	1
3	26	PAHZZ	5340-00-231-0941	72582	5132410	PLUG,EXPANSION	EA	3
3	27	PAHZZ	4730-01-197-2018	72582	8924141	PLUG,PIPE	EA	2
3	28	PAHZZ	5330-01-054-2267	72582	8927189	SEAL,CYLINDER LINER PART OF KIT P/N 23519142	EA	16
3	29	PAHZZ	2815-01-058-0254	72582	5148501	INSERT,CYLINDER PART OF KIT P/N 23519142	EA	8
3	30	PAHZZ	2815-01-358-0154	72582	23508383	LINER,CYLINDER	EA	8

Section II. REPAIR PARTS LIST

(1) ILLUSTRATION		(2)	(3)	(4)	(5)	(6)	(7)	(8)
(a) FIG NO	(b) ITEM NO	SMR CODE	NATIONAL STOCK NUMBER	CAGE	PART NUMBER	DESCRIPTION USABLE ON CODE	UM	QTY INC IN UNIT
						GROUP 0101 CYLINDER BLOCK		
3	31	PAHZZ	5330-01-054-2398	72582	5100404	GASKET PART OF KITS P/N 23512685 AND 5199674	EA	8
3	32	PAFZZ	5365-01-062-0943	72582	5148502	RING,SEAL PART OF KIT P/N 5199574	EA	34
3	33	PAHZZ	2815-01-205-9413	72582	8923160	STABILIZER,CSHAFT	EA	1
3	34	PAHZZ	5310-01-209-7979	72582	5125608	WASHER,FLAT 15/32 X 3/4	EA	7
3	35	PAHZZ	5305-00-071-1787	80204	B1821BH044C113N	SCREW,CAP,HEX 7/16-14 X 1 1/8	EA	7
3	36	PAHZZ	2815-01-052-3554	72582	8923159	STABILIZER,CAP,BRG	EA	1
3	37	PAHZZ	2815-01-051-6673	72582	8923162	STABILIZER,DIESEL	EA	1
3	38	PAHZZ	2915-01-052-5633	72582	8923163	STABILIZER,CAP,BRG	EA	1